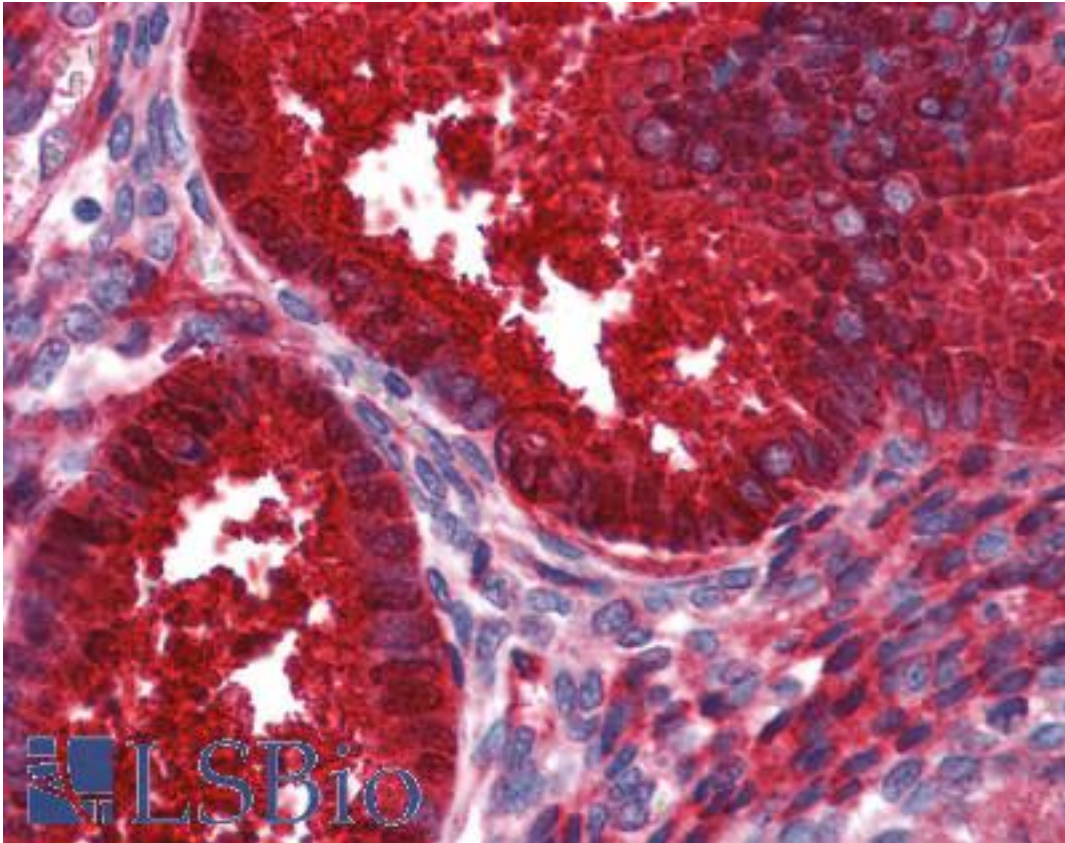


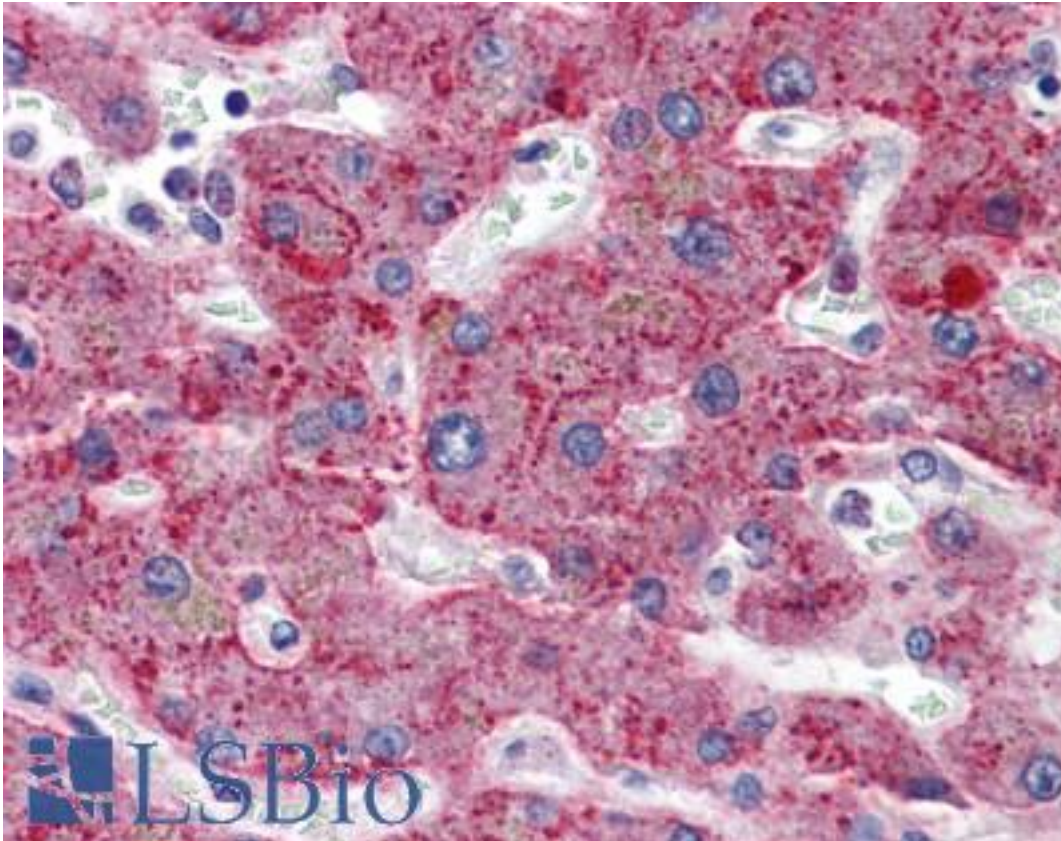
SERPING1 / C1 Inhibitor Mouse anti-Human Monoclonal (3F4-1D9) Antibody - LS-B6012 - LSBio	
CatalogID:	LS-B6012
Validation:	This antibody replaces catalog number LS-C133003. It has been validated for use in the following assays: IHC-P.
Target:	serpin peptidase inhibitor, clade G (C1 inhibitor), member 1 (SERPING1)
Synonyms:	SERPING1 Antibody, C1-inhibiting factor Antibody, C1IN Antibody, C1 Inh Antibody, C1-INH Antibody, C1INH Antibody, C1NH Antibody, C1 Inhibitor Antibody, HAE1 Antibody, HAE2 Antibody, Plasma protease C1 inhibitor Antibody, C1 esterase inhibitor Antibody, Serpin G1 Antibody
Host	SERPING1 antibody was produced in Mouse
Clonality:	Monoclonal
Isotype:	IgG2a,k
Clone Name:	3F4-1D9
Immunogen Species:	SERPING1 / C1 Inhibitor antibody was raised against Human
Immunogen:	SERPING1 / C1 Inhibitor antibody was raised against sERPING1 (AAH11171, 1 a.a. ~ 501 a.a) full length recombinant protein with GST tag. MW of the GST tag alone is 26 KDa.
Specificity:	Human SERPING1
Reactivity:	Human
Purification:	Protein A purified
Presentation:	PBS, pH 7.4.
Recommended Storage:	Aliquot and store at -20°C or -80°C. Avoid freeze-thaw cycles.
Usage Summary:	Immunohistochemistry: Formalin-fixed paraffin-embedded sections. ELISA: Recombinant protein. Western Blot: Tissue lysate, Transfected lysate, Recombinant protein.
Uses:	IHC - Paraffin (5 µg/ml), Western blot (1:500 - 1:1000), Immunoprecipitation, ELISA (Optimal dilution to be determined by the researcher)
Size:	50 µg
Concentration:	0.5 mg/ml

Immunohistochemistry Image:



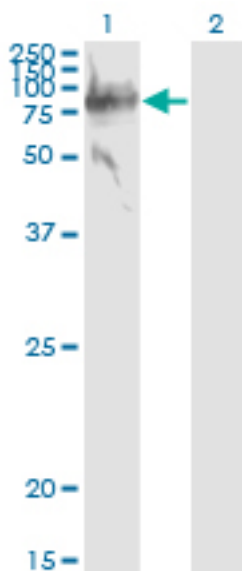
Anti-SERPING1 / C1INH antibody IHC of human uterus. Immunohistochemistry of formalin-fixed, paraffin-embedded tissue after heat-induced antigen retrieval. Antibody LS-B6012 concentration 5 ug/ml.

Immunohistochemistry Image:



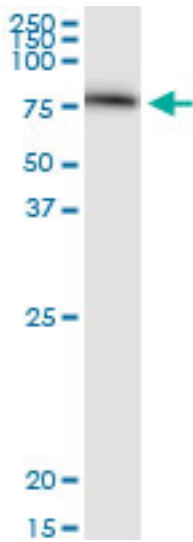
Anti-SERPING1 / C1INH antibody IHC of human liver. Immunohistochemistry of formalin-fixed, paraffin-embedded tissue after heat-induced antigen retrieval. Antibody LS-B6012 concentration 5 ug/ml.

Western Blot Image:



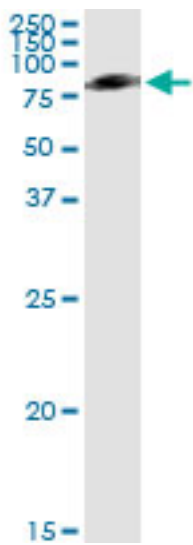
Western blot of SERPING1 expression in transfected 293T cell line. Lane 1: SERPING1 transfected lysate (Predicted MW: 55.2 KDa). Lane 2: Non-transfected lysate.

Western Blot Image:



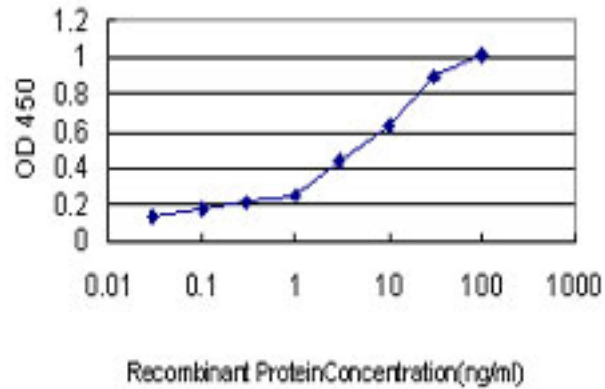
Western blot of SERPING1 expression in human liver.

Immunoprecipitation Image:



Immunoprecipitation of SERPING1 transfected lysate using anti-SERPING1 monoclonal antibody and Protein A Magnetic Bead.

ELISA Image:



Detection limit for recombinant GST tagged SERPING1 is approximately 0.1 ng/ml as a capture antibody.

Requested From:

Japan

Laboratory Reagent For In Vitro Research Use Only

Not for resale without prior written consent from LifeSpan BioSciences, Inc.

Created on 9/24/2014

© 2014 LifeSpan BioSciences