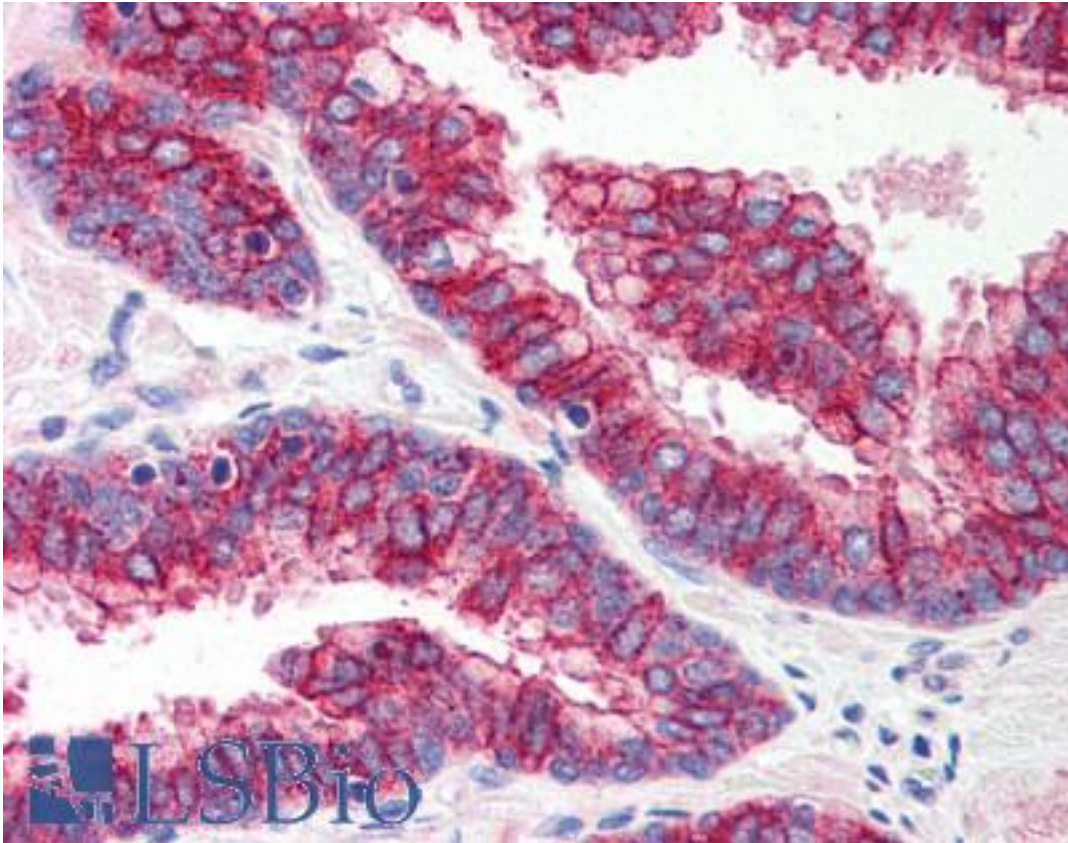


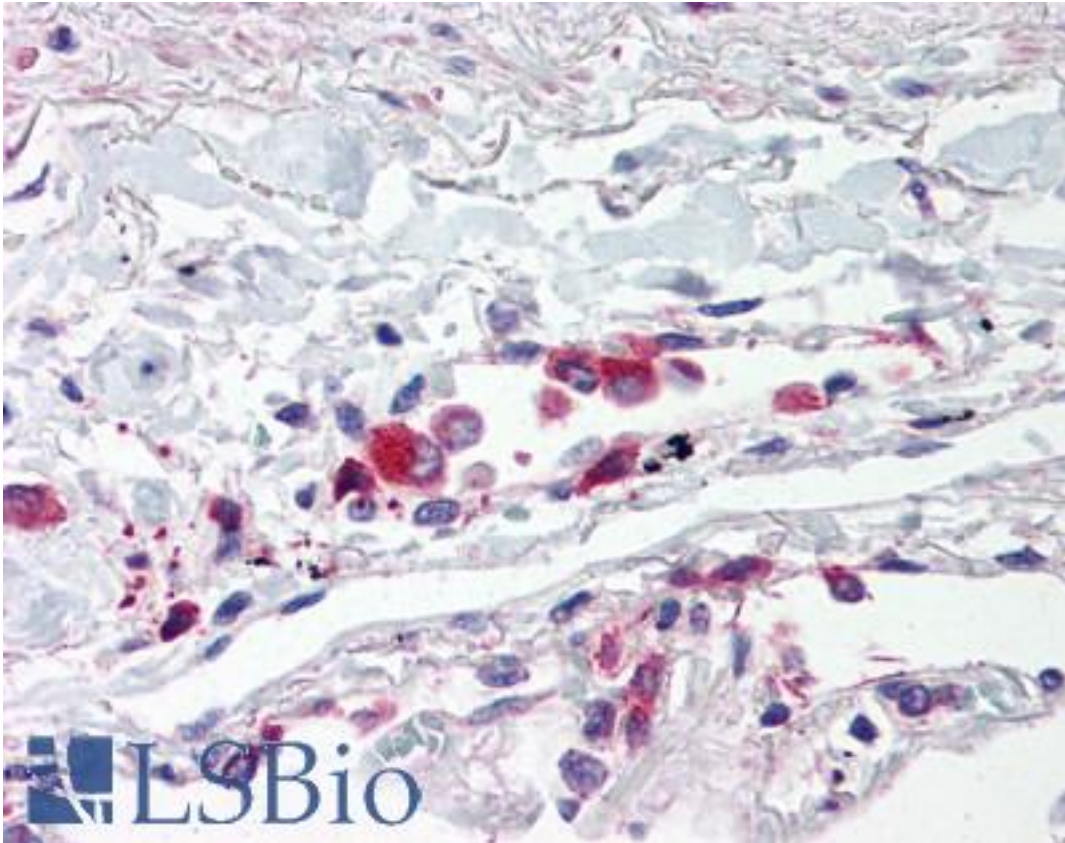
TLR5 Rabbit anti-Human Polyclonal (Internal) Antibody - LS-B601 - LSBio	
<b>CatalogID:</b>	LS-B601
<b>Validation:</b>	This antibody replaces catalog number LS-C19550. It has been validated for use in the following assays: IHC.
<b>Target:</b>	toll-like receptor 5 (TLR5)
<b>Synonyms:</b>	TLR5 Antibody, TIL3 Antibody, Toll-like receptor 5 Antibody, SLEB1 Antibody
<b>Family / Subfamily:</b>	Toll-like Receptor / not assigned-Toll-like Receptor
<b>Host</b>	TLR5 antibody was produced in Rabbit
<b>Clonality:</b>	Polyclonal
<b>Immunogen Species:</b>	TLR5 antibody was raised against Human
<b>Antigen Type:</b>	Synthetic peptide
<b>Immunogen:</b>	TLR5 antibody was raised against synthetic peptide from human TLR5.
<b>Specificity:</b>	peptide corresponding to 16 amino acids near the center of human TLR5
<b>Epitope:</b>	Internal
<b>Reactivity:</b>	Human, Mouse, Rat
<b>Purification:</b>	Immunoaffinity purified
<b>Presentation:</b>	PBS, 0.02% sodium azide.
<b>Recommended Storage:</b>	Short term 4°C, long term aliquot and store at -20°C, avoid freeze thaw cycles. Store undiluted.
<b>Usage Summary:</b>	Immunohistochemistry: LS-B601 was validated for use in immunohistochemistry on a panel of 21 formalin-fixed, paraffin-embedded (FFPE) human tissues after heat induced antigen retrieval in pH 6.0 citrate buffer. After incubation with the primary antibody, slides were incubated with biotinylated secondary antibody, followed by alkaline phosphatase-streptavidin and chromogen. The stained slides were evaluated by a pathologist to confirm staining specificity. The optimal working concentration for LS-B601 was determined to be 5 ug/ml.
<b>Uses:</b>	IHC - Paraffin (5 µg/ml), Western blot (1 - 2 µg/ml) (Optimal dilution to be determined by the researcher)
<b>Size:</b>	50 µg
<b>Concentration:</b>	1 mg/ml

**Immunohistochemistry Image:**



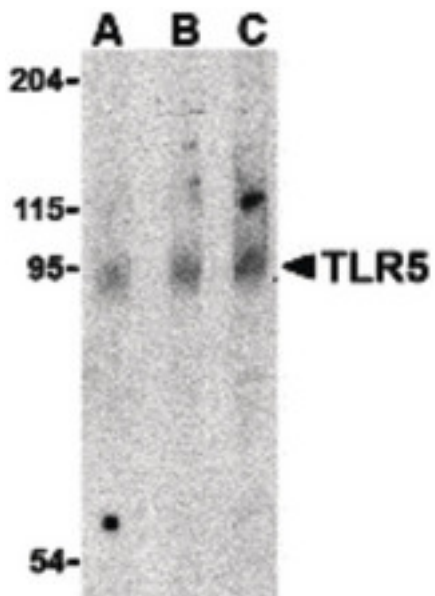
Anti-TLR5 antibody IHC of human prostate. Immunohistochemistry of formalin-fixed, paraffin-embedded tissue after heat-induced antigen retrieval. Antibody LS-B601 concentration 5 ug/ml.

**Immunohistochemistry Image:**



Anti-TLR5 antibody IHC of human lung, alveolar macrophages. Immunohistochemistry of formalin-fixed, paraffin-embedded tissue after heat-induced antigen retrieval. Antibody LS-B601 concentration 5 ug/ml.

**Western Blot Image:**



Western blot of TLR5 in rat brain cell lysate with TLR5 antibody at (A) 0.5, (B) 1 and (C) 2 ug/ml.

<b>Requested From:</b>	Japan
Laboratory Reagent For In Vitro Research Use Only	
Not for resale without prior written consent from LifeSpan BioSciences, Inc.	
Created on 9/24/2014	
© 2014 LifeSpan BioSciences	