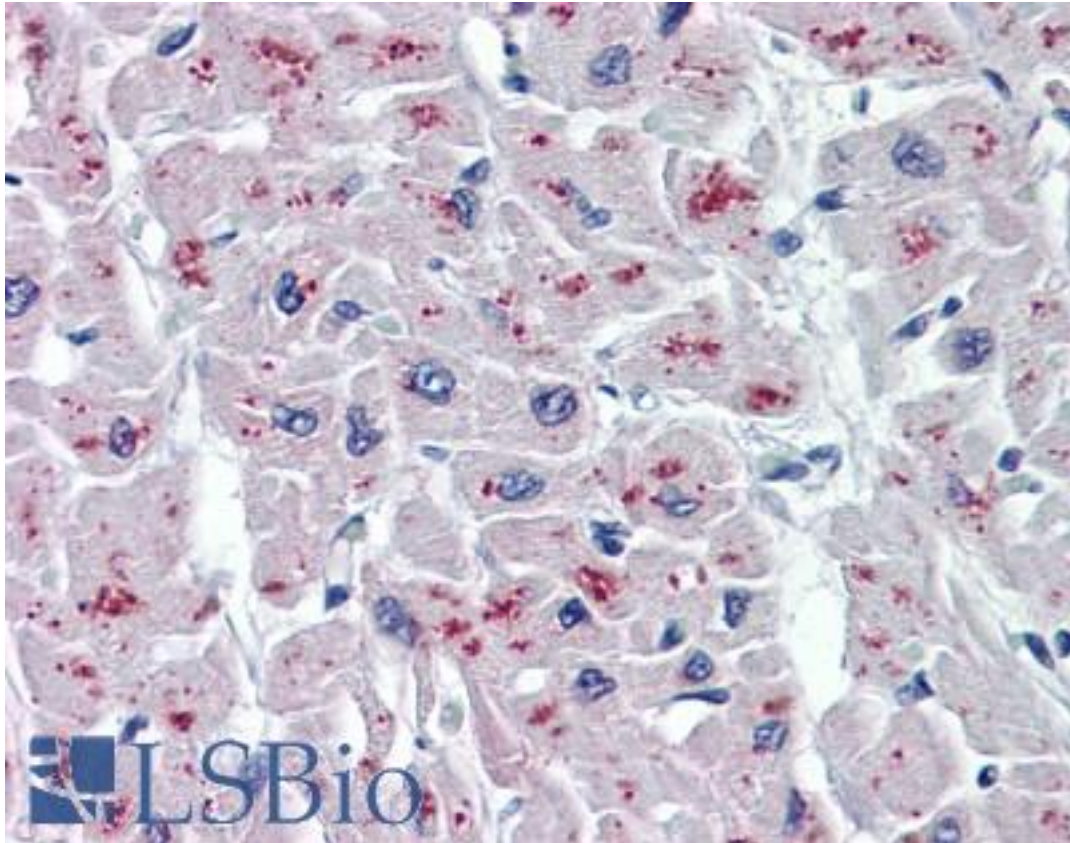


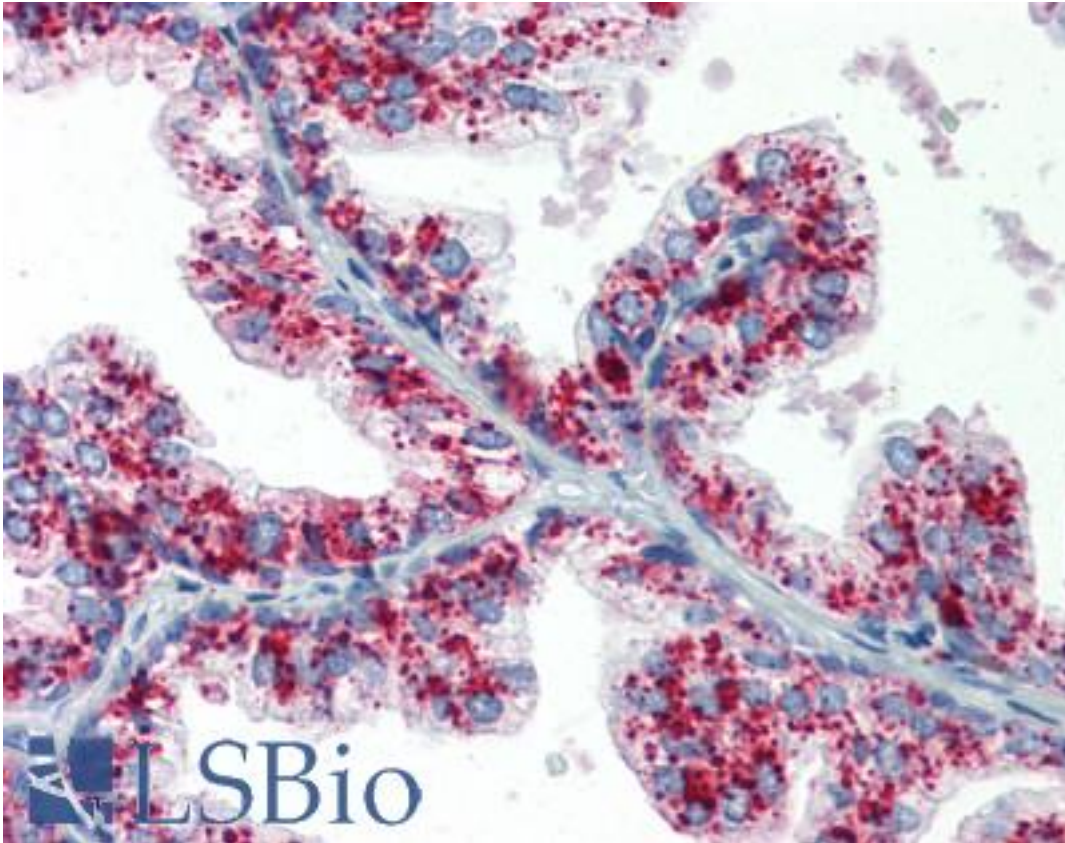
ASAH1 / Acid Ceramidase Mouse anti-Human Monoclonal (1A7) Antibody - LS-B6009 - LSBio	
CatalogID:	LS-B6009
Validation:	This antibody replaces catalog number LS-C133054. It has been validated for use in the following assays: IHC-P.
Target:	N-acylsphingosine amidohydrolase (acid ceramidase) 1 (ASAH1)
Synonyms:	ASAH1 Antibody, ACDase Antibody, Acid CDase Antibody, Acid ceramidase Antibody, ASAH Antibody, Acylsphingosine deacylase Antibody, PHP32 Antibody, SMAPME Antibody, PHP Antibody, Putative 32 kDa heart protein Antibody
Host	ASAH1 antibody was produced in Mouse
Clonality:	Monoclonal
Isotype:	IgG3,k
Clone Name:	1A7
Immunogen Species:	ASAH1 / Acid Ceramidase antibody was raised against Human
Antigen Type:	Recombinant protein
Immunogen:	ASAH1 / Acid Ceramidase antibody was raised against aSAH1 (NP_808592, 25 a.a. ~ 125 a.a) partial recombinant protein with GST tag. MW of the GST tag alone is 26 kDa.
Specificity:	Human ASAH1
Reactivity:	Human
Purification:	Protein A purified
Presentation:	PBS, pH 7.4. Sourced in Ascites.
Recommended Storage:	Store at -20°C or lower. Aliquot to avoid repeated freezing and thawing.
Usage Summary:	Immunohistochemistry: Formalin-fixed paraffin-embedded sections. Sandwich ELISA: Recombinant protein. Western Blot: Transfected lysate, Recombinant protein.
Uses:	IHC - Paraffin (5 µg/ml), Western blot (1:500 - 1:1000), ELISA (Optimal dilution to be determined by the researcher)
Size:	50 µg
Concentration:	0.4 mg/ml

Immunohistochemistry Image:



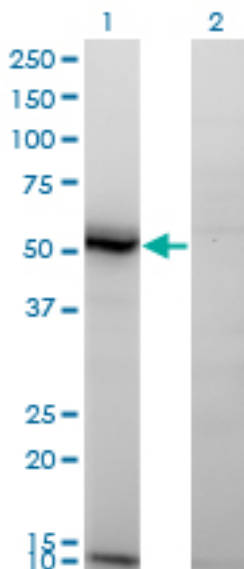
Anti-ASA1 antibody IHC of human heart. Immunohistochemistry of formalin-fixed, paraffin-embedded tissue after heat-induced antigen retrieval. Antibody LS-B6009 concentration 5 ug/ml.

Immunohistochemistry Image:



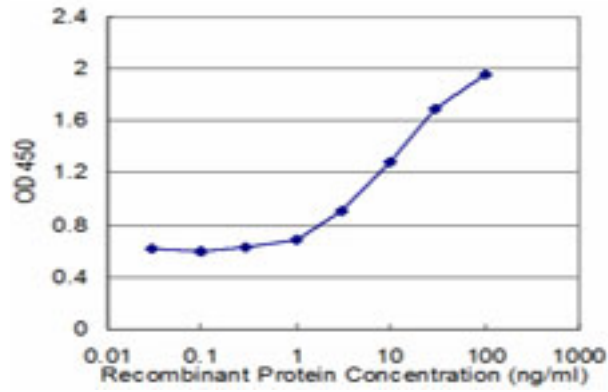
Anti-ASAH1 antibody IHC of human prostate. Immunohistochemistry of formalin-fixed, paraffin-embedded tissue after heat-induced antigen retrieval. Antibody LS-B6009 concentration 5 ug/ml.

Western Blot Image:



Western blot of ASAH1 expression in transfected 293T cell line. Lane 1: ASAH1 transfected lysate (45 KDa). Lane 2: Non-transfected lysate.

ELISA Image:



Detection limit for recombinant GST tagged ASAH1 is approximately 1 ng/ml as a capture antibody.

Requested From:

Japan

Laboratory Reagent For In Vitro Research Use Only

Not for resale without prior written consent from LifeSpan BioSciences, Inc.

Created on 9/24/2014

© 2014 LifeSpan BioSciences