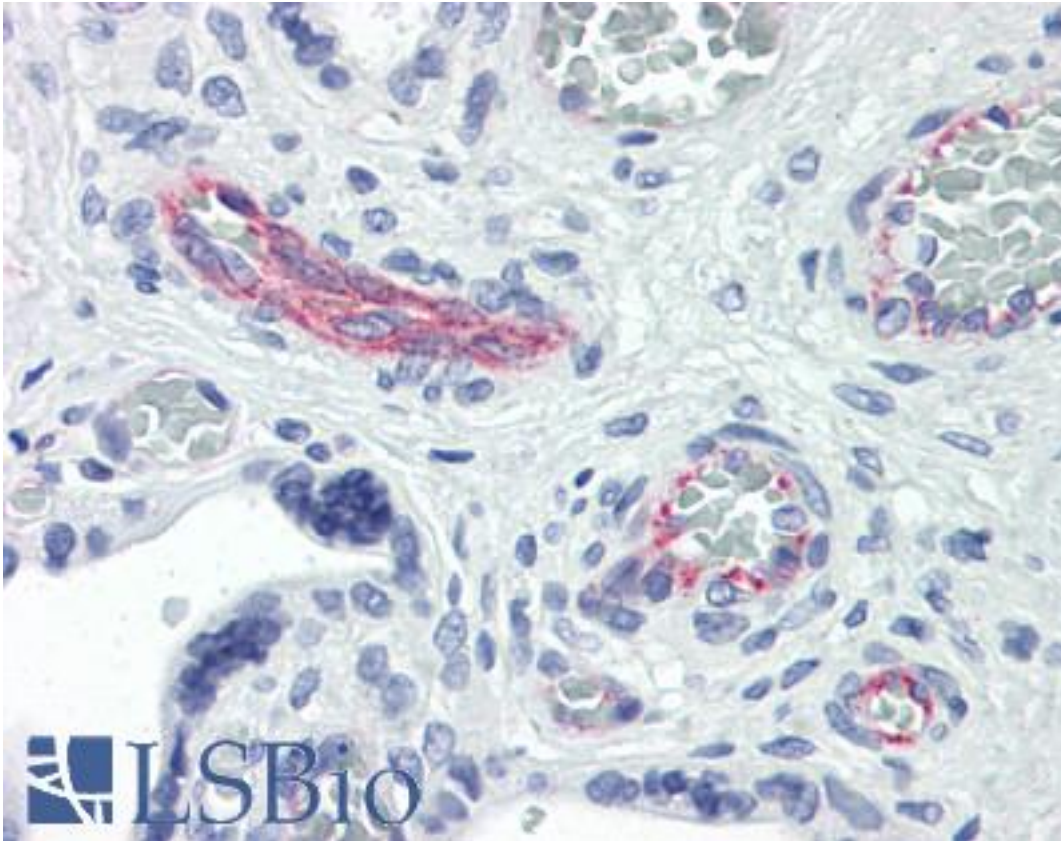


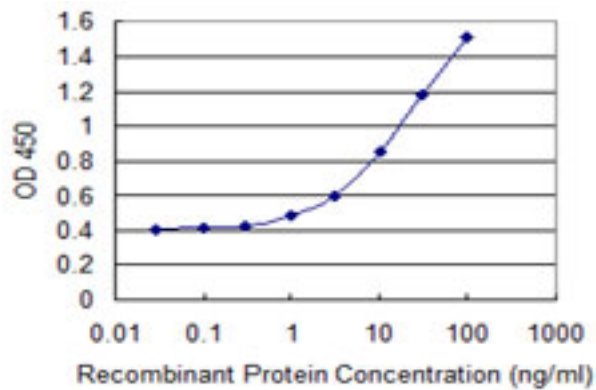
RHOE / RND3 Mouse anti-Human Monoclonal (1D2) Antibody - LS-B6006 - LSBio	
CatalogID:	LS-B6006
Validation:	This antibody replaces catalog number LS-C133865. It has been validated for use in the following assays: IHC-P.
Target:	Rho family GTPase 3 (RND3)
Synonyms:	RND3 Antibody, ARHE Antibody, Rho family GTPase 3 Antibody, RhoE Antibody, Small GTP binding protein Rho8 Antibody, MemB Antibody, Rho8 Antibody, Protein MemB Antibody
Family / Subfamily:	Ras GTPase superfamily IPR001806 / not assigned-Ras GTPase superfamily IPR001806
Host	RND3 antibody was produced in Mouse
Clonality:	Monoclonal
Isotype:	IgG2a,k
Clone Name:	1D2
Immunogen Species:	RHOE / RND3 antibody was raised against Human
Immunogen:	RHOE / RND3 antibody was raised against rND3 (AAH12513, 1 a.a. ~ 245 a.a) full-length recombinant protein with GST tag. MW of the GST tag alone is 26 KDa.
Specificity:	Human RND3
Reactivity:	Human
Purification:	Protein A purified
Presentation:	PBS, pH 7.2. Sourced in Ascites.
Recommended Storage:	Aliquot and store at -20°C or -80°C. Avoid freeze-thaw cycles.
Usage Summary:	Immunohistochemistry: Formalin-fixed paraffin-embedded sections. Sandwich ELISA: Recombinant protein. Western Blot: Recombinant protein.
Uses:	IHC - Paraffin (10 µg/ml), Western blot (1:500 - 1:1000), ELISA (Optimal dilution to be determined by the researcher)
Size:	50 µg
Concentration:	1 mg/ml

Immunohistochemistry Image:



Anti-RND3 antibody IHC of human placenta. Immunohistochemistry of formalin-fixed, paraffin-embedded tissue after heat-induced antigen retrieval. Antibody LS-B6006 concentration 10 ug/ml.

ELISA Image:



Detection limit for recombinant GST tagged RND3 is 0.3 ng/ml as a capture antibody.

Requested From:

Japan

Laboratory Reagent For In Vitro Research Use Only

Not for resale without prior written consent from LifeSpan BioSciences, Inc.

Created on 9/24/2014

© 2014 LifeSpan BioSciences