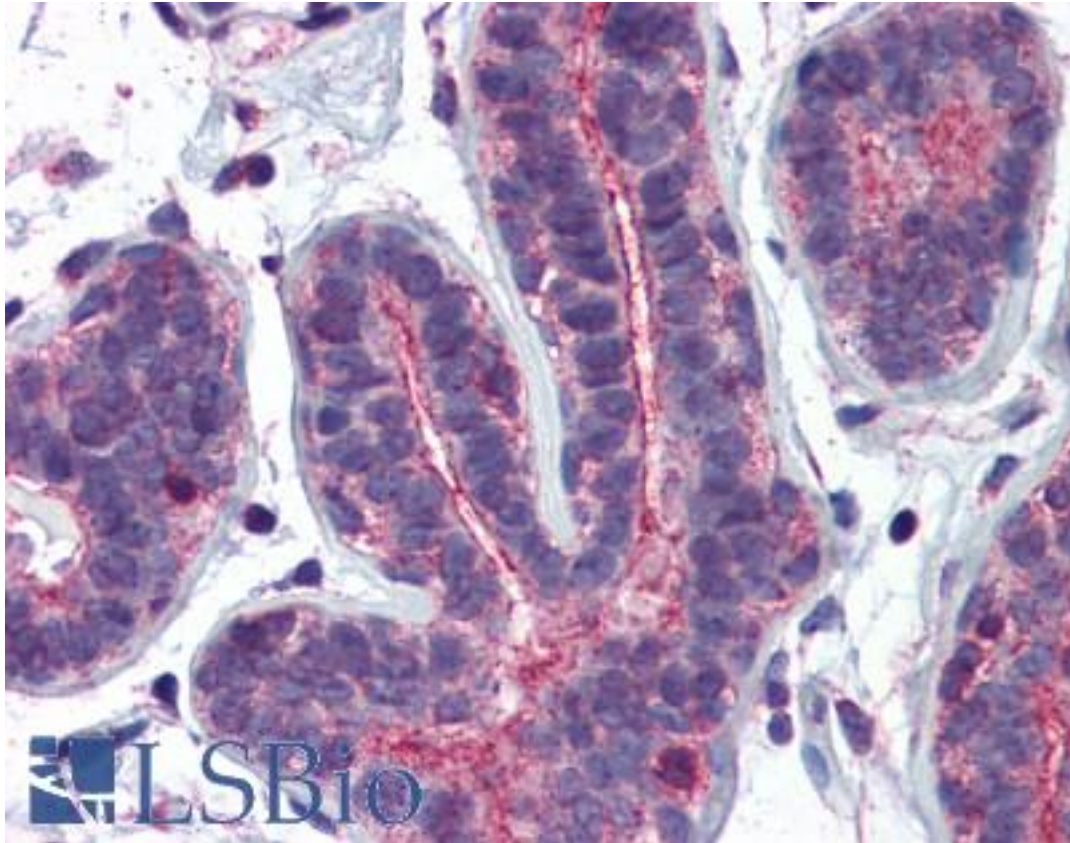


**RHOA Mouse anti-Human Monoclonal (1B12) Antibody - LS-B6004 - LSBio**

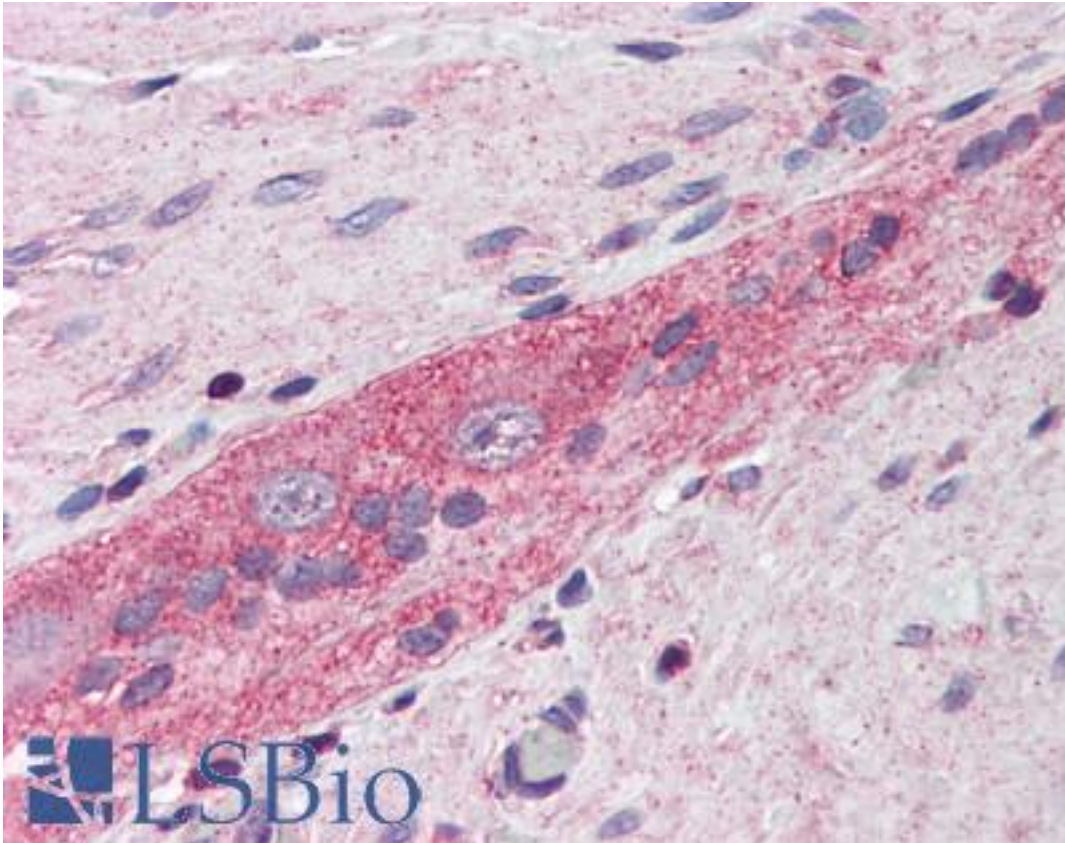
<b>CatalogID:</b>	LS-B6004
<b>Validation:</b>	This antibody replaces catalog number LS-C133050. It has been validated for use in the following assays: IHC-P.
<b>Target:</b>	ras homolog family member A (RHOA)
<b>Synonyms:</b>	RHOA Antibody, ARH12 Antibody, ARHA Antibody, Aplysia ras-related homolog 12 Antibody, H12 Antibody, Oncogene RHO H12 Antibody, Rho cDNA clone 12 Antibody, RHO12 Antibody, RHOH12 Antibody, Ras homolog family member A Antibody, Small GTP binding protein RhoA Antibody, Transforming protein RhoA Antibody
<b>Family / Subfamily:</b>	Ras GTPase superfamily IPR001806 / not assigned-Ras GTPase superfamily IPR001806
<b>Host</b>	RHOA antibody was produced in Mouse
<b>Clonality:</b>	Monoclonal
<b>Isotype:</b>	IgG1,I
<b>Clone Name:</b>	1B12
<b>Immunogen Species:</b>	RHOA antibody was raised against Human
<b>Immunogen:</b>	RHOA antibody was raised against rHOA (AAH01360, 1 a.a. ~ 194 a.a) full length recombinant protein with GST tag. MW of the GST tag alone is 26 KDa.
<b>Specificity:</b>	Human RHOA
<b>Reactivity:</b>	Human
<b>Purification:</b>	Protein A purified
<b>Presentation:</b>	PBS, pH 7.4.
<b>Recommended Storage:</b>	Aliquot and store at -20°C or -80°C. Avoid freeze-thaw cycles.
<b>Usage Summary:</b>	Immunohistochemistry: Formalin-fixed paraffin-embedded sections. Sandwich ELISA: Recombinant protein. Western Blot: Cell lysate, Transfected lysate, Recombinant protein.
<b>Uses:</b>	IHC - Paraffin (5 µg/ml), Immunofluorescence (10 µg/ml), Western blot (1:500 - 1:1000), ELISA (Optimal dilution to be determined by the researcher)
<b>Size:</b>	50 µg
<b>Concentration:</b>	0.4 mg/ml

**Immunohistochemistry Image:**



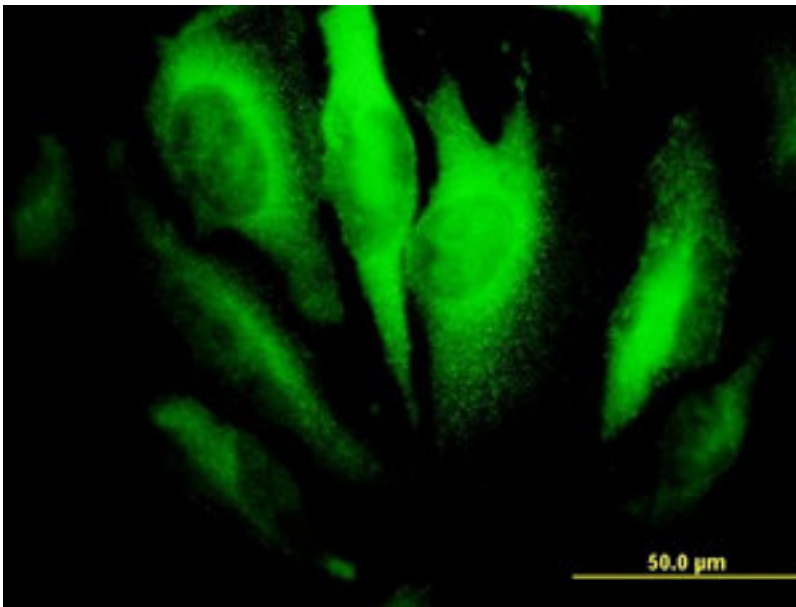
Anti-RHOA antibody IHC of human breast. Immunohistochemistry of formalin-fixed, paraffin-embedded tissue after heat-induced antigen retrieval. Antibody LS-B6004 concentration 5 ug/ml.

**Immunohistochemistry Image:**



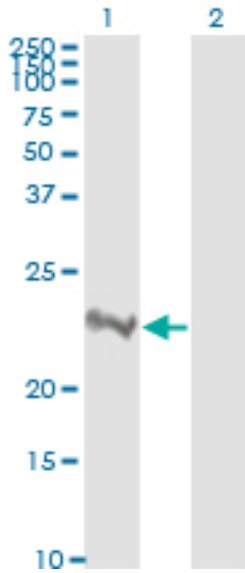
Anti-RHOA antibody IHC of human small intestine, myenteric plexus. Immunohistochemistry of formalin-fixed, paraffin-embedded tissue after heat-induced antigen retrieval. Antibody LS-B6004 concentration 5 ug/ml.

**Immunofluorescence Image:**



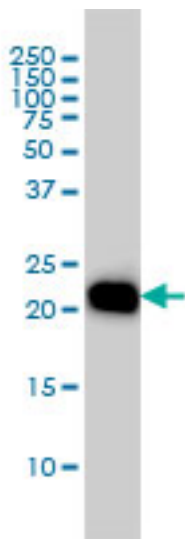
Immunofluorescence of monoclonal antibody to RHOA on HeLa cell. [antibody concentration 10 ug/ml]

**Western Blot Image:**



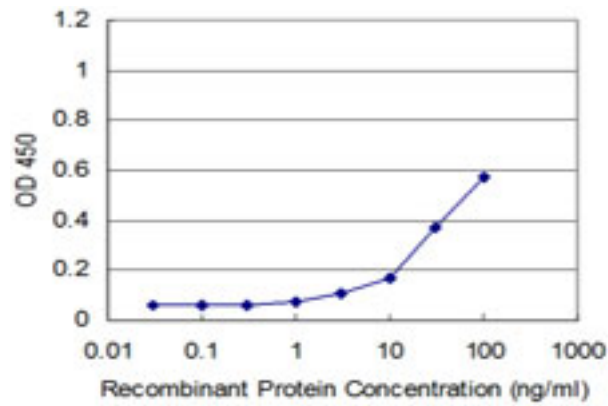
Western blot of RHOA expression in transfected 293T cell line. Lane 1: RHOA transfected lysate(21.8 KDa). Lane 2: Non-transfected lysate.

**Western Blot Image:**



Western blot of RHOA expression in HL-60 cell lysate.

**ELISA Image:**



Detection limit for recombinant GST tagged RHOA is approximately 10 ng/ml as a capture antibody.

**Requested From:**

Japan

Laboratory Reagent For In Vitro Research Use Only

Not for resale without prior written consent from LifeSpan BioSciences, Inc.

Created on 9/24/2014

© 2014 LifeSpan BioSciences