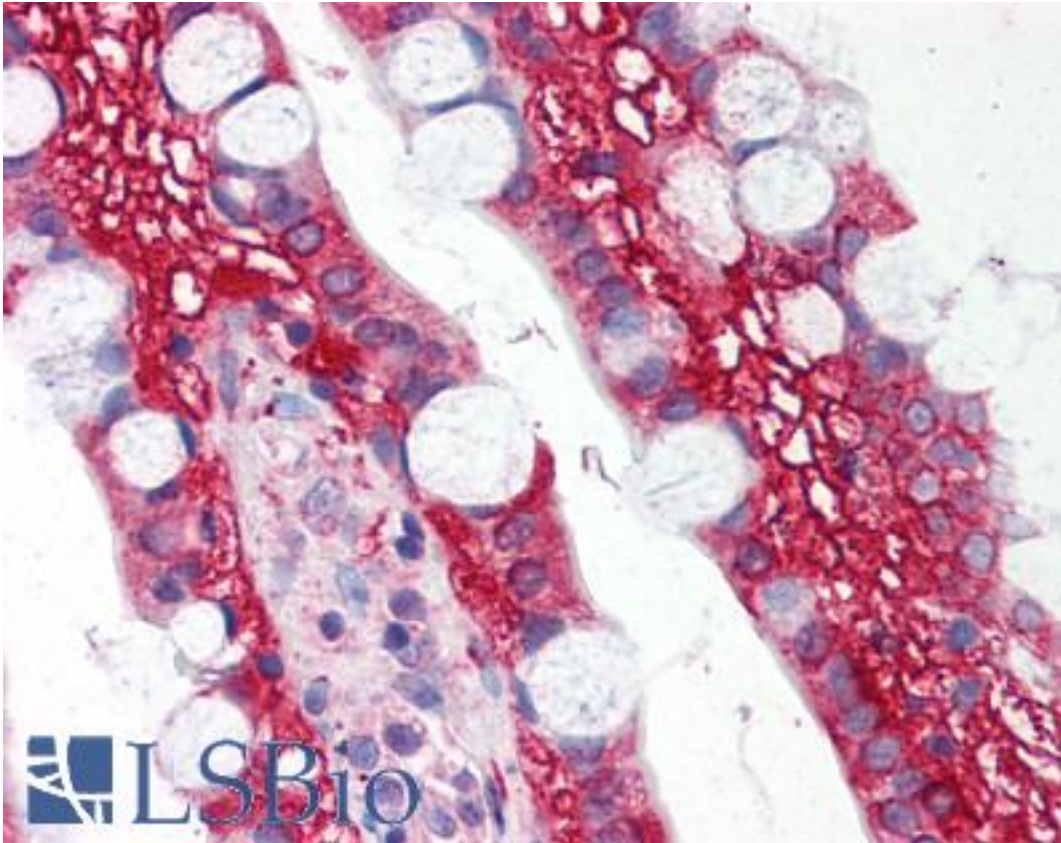


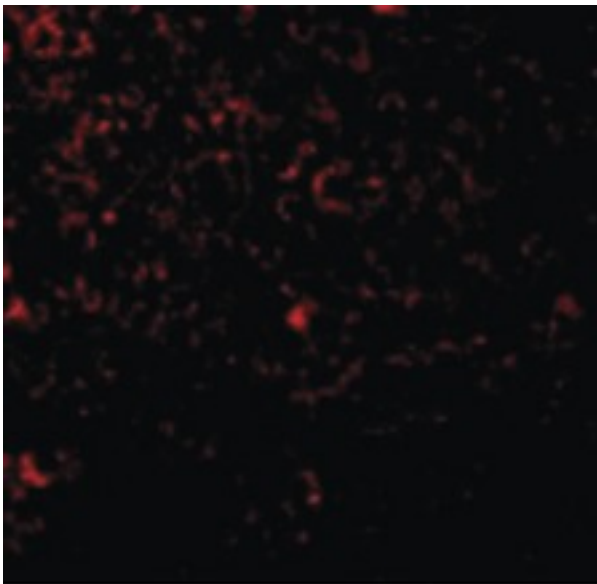
TLR1 Rabbit anti-Human Polyclonal (N-Terminus) Antibody - LS-B600 - LSBio	
<b>CatalogID:</b>	LS-B600
<b>Validation:</b>	This antibody replaces catalog number LS-C19546. It has been validated for use in the following assays: IHC.
<b>Target:</b>	toll-like receptor 1 (TLR1)
<b>Synonyms:</b>	TLR1 Antibody, CD281 antigen Antibody, KIAA0012 Antibody, Rsc786 Antibody, Toll-like receptor 1 Antibody, TIL. LPRS5 Antibody, TIL Antibody, CD281 Antibody
<b>Family / Subfamily:</b>	Toll-like Receptor / not assigned-Toll-like Receptor
<b>Host</b>	TLR1 antibody was produced in Rabbit
<b>Clonality:</b>	Polyclonal
<b>Immunogen Species:</b>	TLR1 antibody was raised against Human
<b>Antigen Type:</b>	Synthetic peptide
<b>Immunogen:</b>	TLR1 antibody was raised against synthetic peptide from human TLR1.
<b>Specificity:</b>	peptide corresponding to 16 amino acids near the amino terminus of human TLR1
<b>Epitope:</b>	N-Terminus
<b>Reactivity:</b>	Human, Mouse
<b>Purification:</b>	Ion exchange chromatography
<b>Presentation:</b>	PBS, 0.02% sodium azide.
<b>Recommended Storage:</b>	Short term 4°C, long term aliquot and store at -20°C, avoid freeze thaw cycles. Store undiluted.
<b>Usage Summary:</b>	Immunohistochemistry: LS-B600 was validated for use in immunohistochemistry on a panel of 21 formalin-fixed, paraffin-embedded (FFPE) human tissues after heat induced antigen retrieval in pH 6.0 citrate buffer. After incubation with the primary antibody, slides were incubated with biotinylated secondary antibody, followed by alkaline phosphatase-streptavidin and chromogen. The stained slides were evaluated by a pathologist to confirm staining specificity. The optimal working concentration for LS-B600 was determined to be 5 ug/ml.
<b>Uses:</b>	IHC - Paraffin (5 µg/ml), Western blot (1 - 2 µg/ml) (Optimal dilution to be determined by the researcher)
<b>Size:</b>	50 µg
<b>Concentration:</b>	1 mg/ml

**Immunohistochemistry Image:**



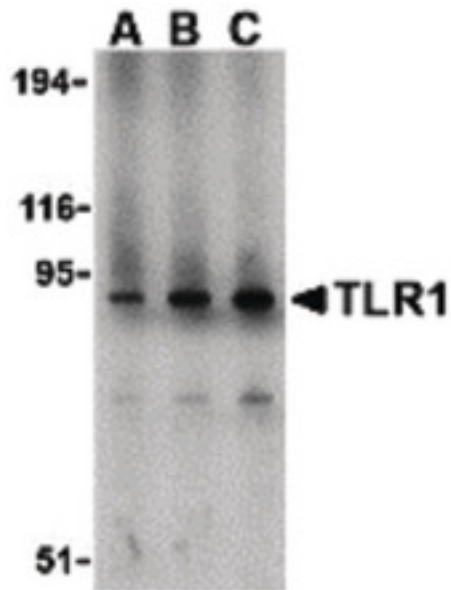
Anti-TLR1 antibody IHC of human small intestine. Immunohistochemistry of formalin-fixed, paraffin-embedded tissue after heat-induced antigen retrieval. Antibody LS-B600 concentration 5 ug/ml.

**Immunofluorescence Image:**



Immunofluorescence of TLR1 in Mouse Spleen cells with TLR1 antibody at 20 ug/ml.

**Western Blot Image:**



Western blot of TLR1 in mouse spleen lysate with TLR1 antibody at (A) 1, (B) 2, and (C) 4 ug/ml.

**Requested From:**

Japan

Laboratory Reagent For In Vitro Research Use Only

Not for resale without prior written consent from LifeSpan BioSciences, Inc.

Created on 9/24/2014

© 2014 LifeSpan BioSciences