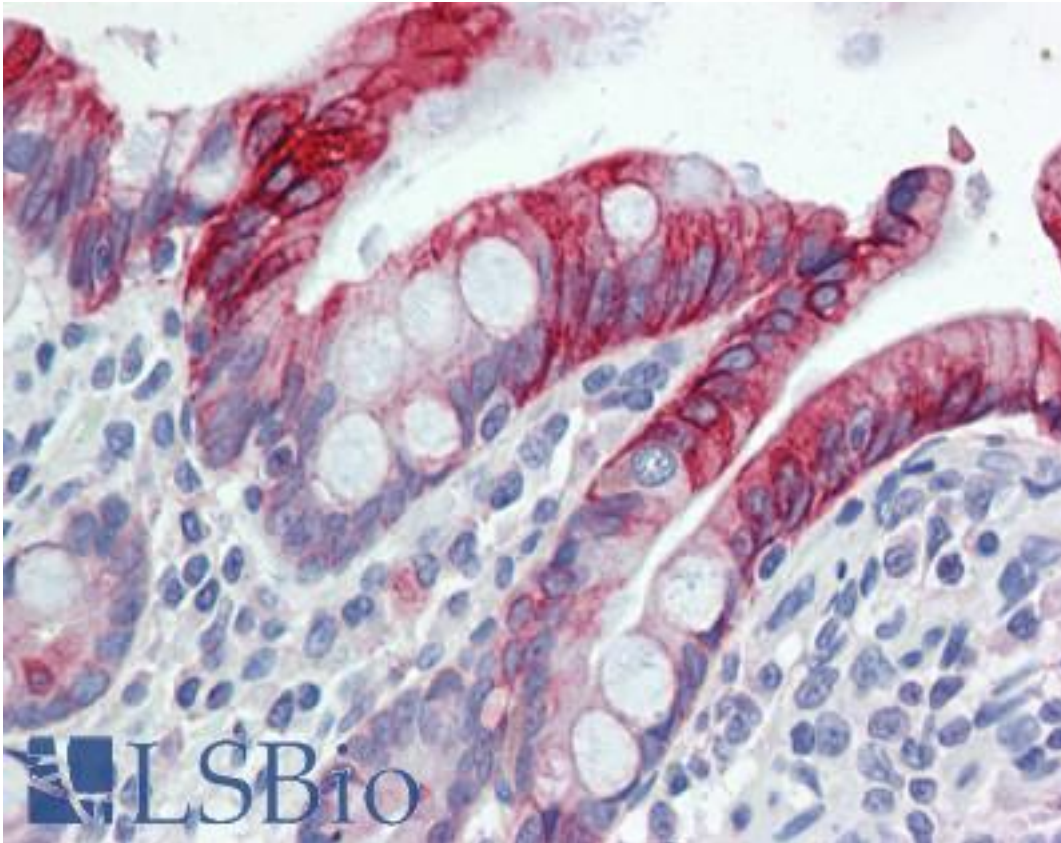


KRT20 / CK20 / Cytokeratin 20 Mouse anti-Human Monoclonal (FITC) (IT-Ks 20.10) Antibody - LS-B5959 - LSBio	
CatalogID:	LS-B5959
Validation:	This antibody replaces catalog number LS-C86863. It has been validated for use in the following assays: IHC-P.
Target:	keratin 20 (KRT20)
Synonyms:	KRT20 Antibody, Cytokeratin-20 Antibody, Cytokeratin 20 Antibody, CK20 Antibody, K20 Antibody, Keratin 20 Antibody, Keratin-20 Antibody, KRT21 Antibody, CK-20 Antibody, Protein IT Antibody
Family / Subfamily:	Keratin / not assigned-Keratin
Host	KRT20 antibody was produced in Mouse
Clonality:	Monoclonal
Isotype:	IgG1
Clone Name:	IT-Ks 20.10
Conjugations:	Fluorescein (FITC)
Immunogen Species:	KRT20 / CK20 / Cytokeratin 20 antibody was raised against Human
Immunogen:	KRT20 / CK20 / Cytokeratin 20 antibody was raised against electrophoretically purified keratin K20 from human intestinal mucosa
Specificity:	Human, pig, and rat. Polypeptide reacting: Protein IT Reactivities on cultured Cell lines that have been tested so far are HT-29, LoVo, DLD-1, SW 1116 CaCo-2, RT-4.
Reactivity:	Human, Rat, Pig
Purification:	Affinity purified
Presentation:	Supplied as a liquid. No preservatives added.
Recommended Storage:	Long term: -20°C; Short term: +4°C. Avoid repeat freeze-thaw cycles.
Uses:	IHC - Paraffin (1:50), Flow Cytometry (Optimal dilution to be determined by the researcher)
Size:	50 µl
Concentration:	0.2 mg/ml

Immunohistochemistry Image:



Anti-KRT20 / Cytokeratin 20 antibody IHC of human small intestine. Immunohistochemistry of formalin-fixed, paraffin-embedded tissue after heat-induced antigen retrieval. Antibody LS-B5959 dilution 1:50.

Requested From:

Japan

Laboratory Reagent For In Vitro Research Use Only

Not for resale without prior written consent from LifeSpan BioSciences, Inc.

Created on 9/24/2014

© 2014 LifeSpan BioSciences