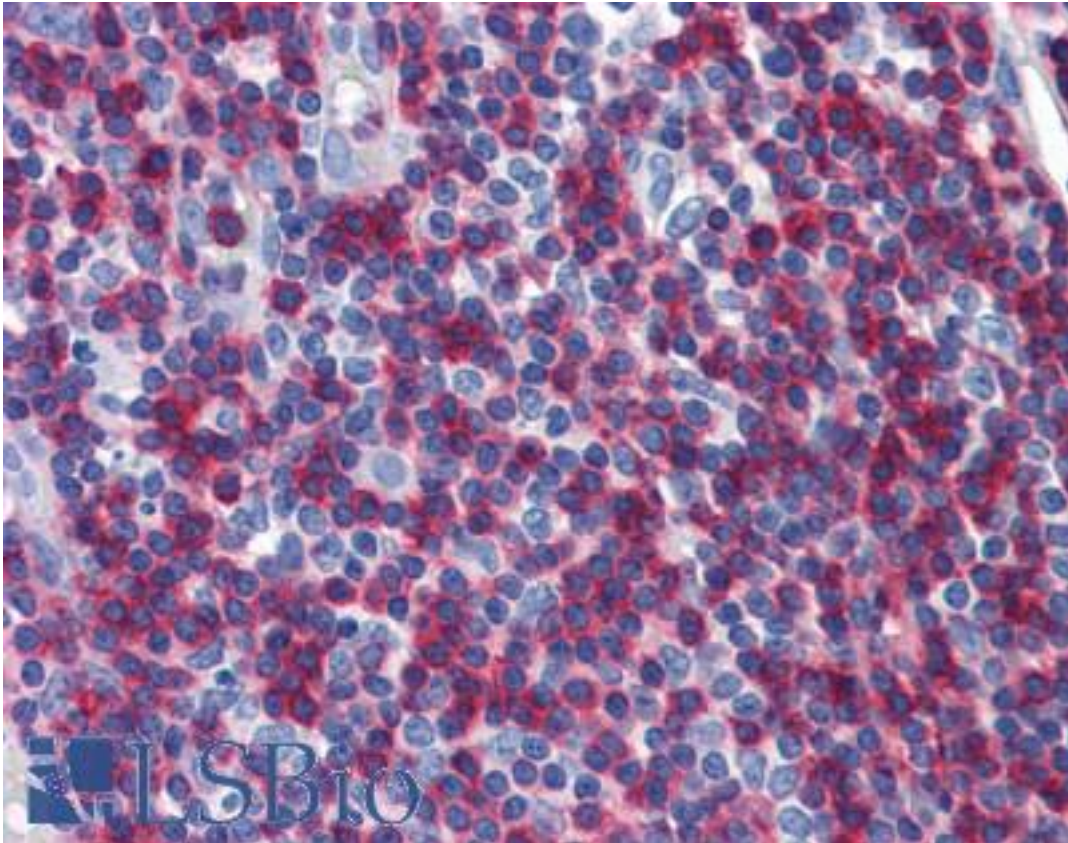


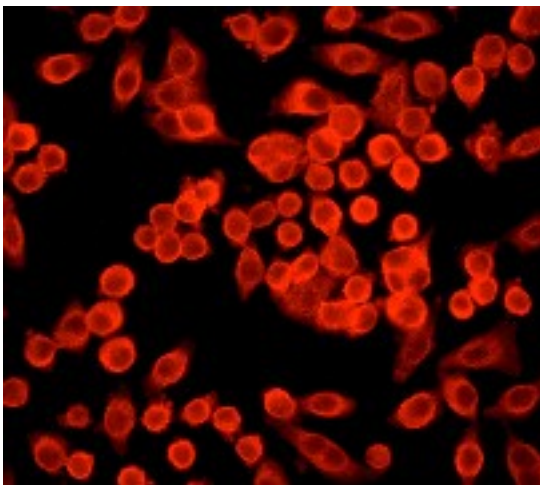
ADD1 Rabbit anti-Human Monoclonal (C-Terminus) (EP734Y) Antibody - LS-B5957 - LSBio	
CatalogID:	LS-B5957
Validation:	This antibody replaces catalog number LS-C49671. It has been validated for use in the following assays: IHC-P.
Target:	adducin 1 (alpha) (ADD1)
Synonyms:	ADD1 Antibody, ADDA Antibody, Adducin 1 (alpha) Antibody, Alpha-adducin Antibody
Host	ADD1 antibody was produced in Rabbit
Clonality:	Monoclonal
Isotype:	IgG
Clone Name:	EP734Y
Immunogen Species:	ADD1 antibody was raised against Human
Antigen Type:	Synthetic peptide
Immunogen:	ADD1 antibody was raised against a synthetic peptide corresponding to residues in the C-term of human Adducin was used as immunogen
Epitope:	C-Terminus
Reactivity:	Human, Mouse, Rat
Purification:	Tissue culture supernatant
Presentation:	Tris-Glycine-NaCl or PBS, pH 7.2-7.4, 40-50% Glycerol, 0.01% sodium azide, 0.05% BSA
Recommended Storage:	Long term: -20°C; Short term: +4°C. Avoid repeat freeze-thaw cycles.
Uses:	IHC - Paraffin (1:50), ICC (1:250 - 1:500), Western blot (1:5000 - 1:50000) (Optimal dilution to be determined by the researcher)
Size:	50 µl
Concentration:	0.56 mg/ml

Immunohistochemistry Image:



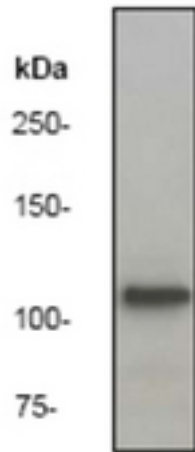
Anti-ADD1 antibody IHC of human tonsil. Immunohistochemistry of formalin-fixed, paraffin-embedded tissue after heat-induced antigen retrieval. Antibody LS-B5957 dilution 1:50.

Immunocytochemistry Image:



Immunofluorescent staining of HeLa using anti-Adducin antibody (C-term).

Western Blot Image:



Western blot analysis on HeLa cell lysate using ADD1 antibody, dilution 1:50000.

Requested From:

Japan

Laboratory Reagent For In Vitro Research Use Only

Not for resale without prior written consent from LifeSpan BioSciences, Inc.

Created on 9/24/2014

© 2014 LifeSpan BioSciences