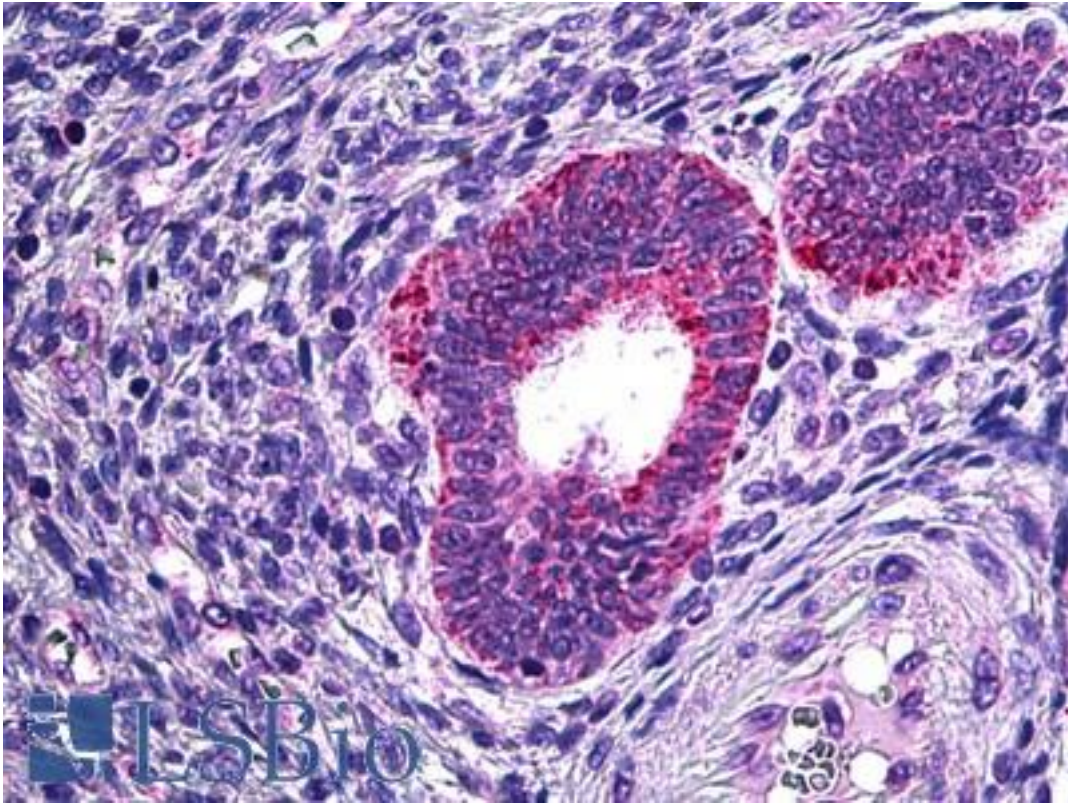


PLA2G4 / PLA2G4A Goat anti-Human Polyclonal (Internal) Antibody - LS-B5952 - LSBio

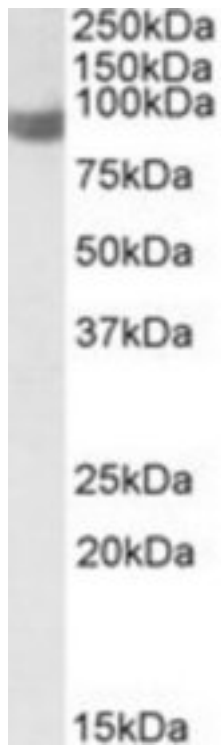
CatalogID:	LS-B5952
Validation:	This antibody replaces catalog number LS-C113010. It has been validated for use in the following assays: IHC-P.
Target:	phospholipase A2, group IVA (cytosolic, calcium-dependent) (PLA2G4A)
Synonyms:	PLA2G4A Antibody, CPLA2 Antibody, CPLA2-alpha Antibody, Cytosolic phospholipase A2 Antibody, Lysophospholipase Antibody, Phospholipase A2 group IVA Antibody, PLA2G4 Antibody
Family / Subfamily:	Phospholipase / not assigned-Phospholipase
Host	PLA2G4A antibody was produced in Goat
Clonality:	Polyclonal
Immunogen Species:	PLA2G4 / PLA2G4A antibody was raised against Human
Antigen Type:	Synthetic peptide
Immunogen:	PLA2G4 / PLA2G4A antibody was raised against synthetic peptide C- QEKTFRQQRKEHIR from an internal region of human PLA2G4A / Phospholipase A2 (NP_077734.1). Percent identity by BLAST analysis: Human, Orangutan, Gibbon (100%); Monkey, Marmoset (93%); Mouse, Rat, Elephant, Panda, Horse (86%).
Specificity:	Human PLA2G4A / Phospholipase A2.
Epitope:	Internal
Reactivity:	Human, Orangutan, Gibbon
Predicted Reactivity:	Monkey
Purification:	Immunoaffinity purified
Presentation:	Tris-buffered saline, pH 7.3, 0.5% BSA, 0.02% sodium azide
Recommended Storage:	Store at -20°C. Minimize freezing and thawing.
Usage Summary:	Peptide ELISA: antibody detection limit dilution 1:32000. Western blot: Approx 90kDa band observed in lysates of cell lines HeLa and NIH3T3 (calculated MW of 85.2kDa according to NP_077734.1). Recommended concentration: 1-3 ug/ml.
Uses:	IHC - Paraffin (3.75 µg/ml), Western blot (1 - 3 µg/ml), ELISA (1:32000) (Optimal dilution to be determined by the researcher)
Size:	50 µg
Concentration:	0.5 mg/ml

Immunohistochemistry Image:



Anti-PLA2G4A antibody IHC of human uterus. Immunohistochemistry of formalin-fixed, paraffin-embedded tissue after heat-induced antigen retrieval. Antibody LS-B5952 concentration 3.75 ug/ml.

Western Blot Image:



PLA2G4A antibody (1 ug/ml) staining of HeLa lysate (35 ug protein/ml in RIPA buffer).
Primary incubation was 1 hour. Detected by chemiluminescence.

Requested From:

Japan

Laboratory Reagent For In Vitro Research Use Only

Not for resale without prior written consent from LifeSpan BioSciences, Inc.

Created on 9/24/2014

© 2014 LifeSpan BioSciences