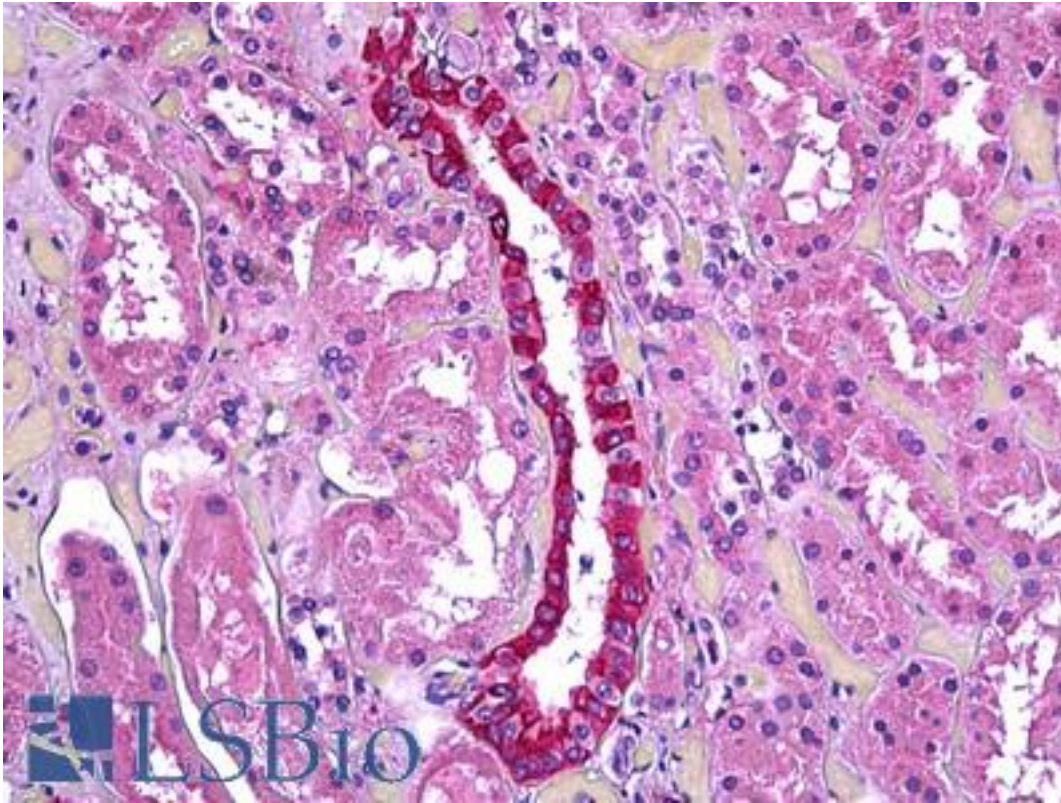


TGFBI Goat anti-Human Polyclonal (Internal) Antibody - LS-B5942 - LSBio

CatalogID:	LS-B5942
Validation:	This antibody replaces catalog number LS-C112676. It has been validated for use in the following assays: IHC-P.
Target:	transforming growth factor, beta-induced, 68kDa (TGFBI)
Synonyms:	TGFBI Antibody, BIGH3 Antibody, Beta ig-h3 Antibody, CDG2 Antibody, CSD Antibody, CSD2 Antibody, CSD3 Antibody, CDGG1 Antibody, EBMD Antibody, Kerato-epithelin Antibody, LCD1 Antibody, RGD-CAP Antibody, CDB1 Antibody, CSD1 Antibody
Family / Subfamily:	TGF beta / not assigned-TGF beta
Host	TGFBI antibody was produced in Goat
Clonality:	Polyclonal
Immunogen Species:	TGFBI antibody was raised against Human
Antigen Type:	Synthetic peptide
Immunogen:	TGFBI antibody was raised against synthetic peptide C-QLYTDRTEKLRPE from an internal region of human TGFBI (NP_000349.1). Percent identity by BLAST analysis: Human, Gorilla, Gibbon, Monkey, Mouse, Rat, Elephant, Panda, Bovine, Dog, Bat, Horse, Rabbit, Pig, Opossum (100%); Marmoset, Platypus (92%).
Specificity:	Human TGFBI.
Epitope:	Internal
Reactivity:	Human, Gorilla, Gibbon, Mouse, Rat, Bat, Bovine, Dog, Horse, Pig, Rabbit
Predicted Reactivity:	Monkey
Purification:	Immunoaffinity purified
Presentation:	Tris-buffered saline, pH 7.3, 0.5% BSA, 0.02% sodium azide
Recommended Storage:	Store at -20°C. Minimize freezing and thawing.
Usage Summary:	Peptide ELISA: antibody detection limit dilution 1:32000. Western blot: Approx 70 kDa band observed in Human, Mouse and Rat Kidney lysates (calculated MW of 74.7 kDa according to Human NP_000349.1). Recommended concentration: 0.2-0.5 ug/ml.
Uses:	IHC - Paraffin (3.75 µg/ml), Western blot (0.2 - 0.5 µg/ml), ELISA (1:32000) (Optimal dilution to be determined by the researcher)
Size:	50 µg
Concentration:	0.5 mg/ml

Immunohistochemistry Image:



Anti-TGFBI antibody IHC of human kidney, renal duct. Immunohistochemistry of formalin-fixed, paraffin-embedded tissue after heat-induced antigen retrieval. Antibody LS-B5942 concentration 3.75 ug/ml.

Western Blot Image:



TGFBI antibody (0.3 ug/ml) staining of Human Kidney lysate (35 ug protein/ml in RIPA buffer). Primary incubation was 1 hour. Detected by chemiluminescence.

Requested From:

Japan

Laboratory Reagent For In Vitro Research Use Only

Not for resale without prior written consent from LifeSpan BioSciences, Inc.

Created on 9/24/2014

© 2014 LifeSpan BioSciences