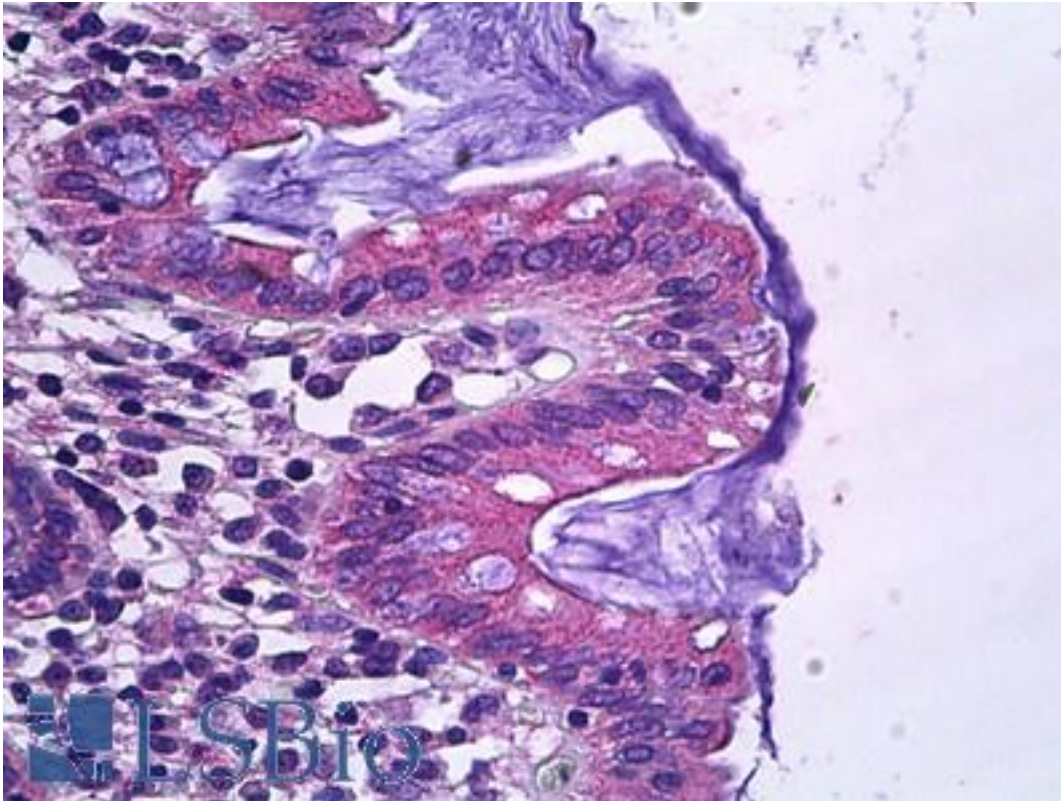


SLC12A2 / NKCC1 Goat anti-Human Polyclonal (Internal) Antibody - LS-B5941 - LSBio

CatalogID:	LS-B5941
Validation:	This antibody replaces catalog number LS-C112911. It has been validated for use in the following assays: IHC-P.
Target:	solute carrier family 12 (sodium/potassium/chloride transporter), member 2 (SLC12A2)
Synonyms:	SLC12A2 Antibody, Basolateral Na-K-Cl symporter Antibody, BSC2 Antibody, MBSC2 Antibody, NKCC1 Antibody, Sy-ns Antibody, BSC Antibody
Family / Subfamily:	Transporter / Cation:chloride symporter
Host	SLC12A2 antibody was produced in Goat
Clonality:	Polyclonal
Immunogen Species:	SLC12A2 / NKCC1 antibody was raised against Human
Antigen Type:	Synthetic peptide
Immunogen:	SLC12A2 / NKCC1 antibody was raised against synthetic peptide C-NALQHSIRLSGVEDH from an internal region of human SLC12A2 / NKCC1 (NP_001037.1). Percent identity by BLAST analysis: Human, Gorilla, Gibbon, Monkey, Ferret, Bovine, Dog, Horse, Pig, Turkey, Chicken (100%); Marmoset, Mouse, Rat, Hamster, Elephant, Panda, Bat, Opossum, Xenopus (93%); Lizard (80%).
Specificity:	Human SLC12A2 / NKCC1.
Epitope:	Internal
Reactivity:	Human, Gorilla, Gibbon, Bovine, Dog, Horse, Pig, Chicken
Predicted Reactivity:	Monkey, Mouse, Rat, Bat, Hamster, Xenopus
Purification:	Immunoaffinity purified
Presentation:	Tris-buffered saline, pH 7.3, 0.5% BSA, 0.02% sodium azide
Recommended Storage:	Store at -20°C. Minimize freezing and thawing.
Usage Summary:	Peptide ELISA: antibody detection limit dilution 1:64000. Western blot: Preliminary experiments gave an approx 75kDa band in Human, Mouse and Rat Skeletal Muscle, Heart and Brain lysates after 1 ug/ml antibody staining. Please note that currently we cannot find an explanation in the literature for the band we observe given the calculated size of 131kDa according to NP_001037.1. The 75kDa band was successfully blocked by incubation with the immunizing peptide.
Uses:	IHC - Paraffin (3.75 µg/ml), ELISA (1:64000) (Optimal dilution to be determined by the researcher)
Size:	50 µg
Concentration:	0.5 mg/ml

Immunohistochemistry Image:



Anti-SLC12A2 / NKCC1 antibody IHC of human colon, epithelium. Immunohistochemistry of formalin-fixed, paraffin-embedded tissue after heat-induced antigen retrieval. Antibody LS-B5941 concentration 3.75 ug/ml.

Requested From:

Japan

Laboratory Reagent For In Vitro Research Use Only

Not for resale without prior written consent from LifeSpan BioSciences, Inc.

Created on 9/24/2014

© 2014 LifeSpan BioSciences