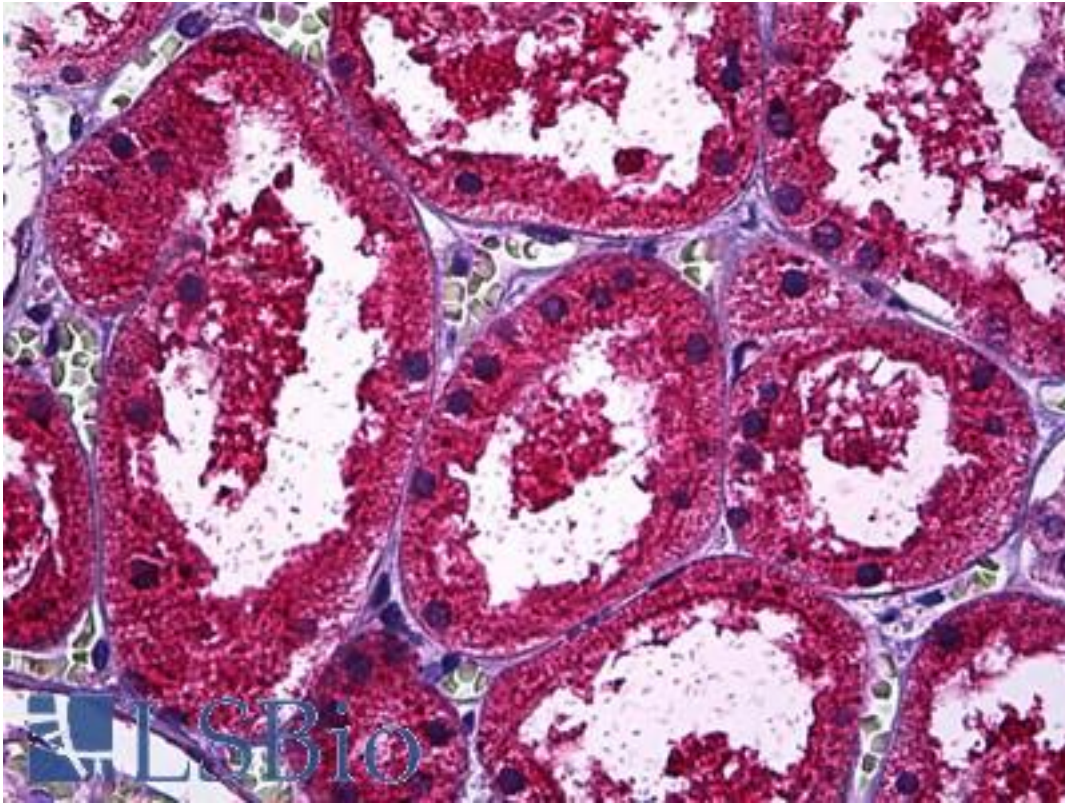


SPP1 / Osteopontin Mouse anti-Human Monoclonal (X1) Antibody - LS-B5940 - LSBio

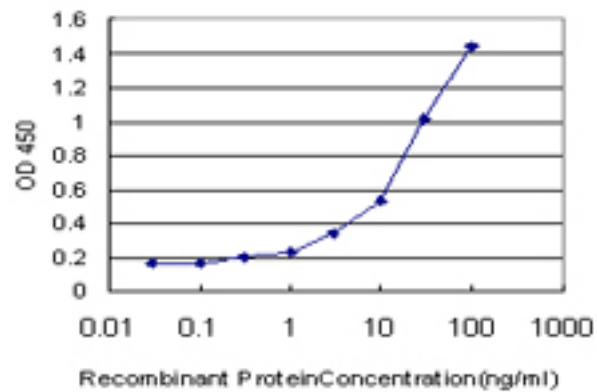
CatalogID:	LS-B5940
Validation:	This antibody replaces catalog number LS-C133949. It has been validated for use in the following assays: IHC-P.
Target:	secreted phosphoprotein 1 (SPP1)
Synonyms:	SPP1 Antibody, BSPI Antibody, BNSP Antibody, Bone sialoprotein 1 Antibody, ETA-1 Antibody, Nephropontin Antibody, OPN Antibody, Secreted phosphoprotein 1 Antibody, SPP-1 Antibody, SPP1/CALPHA1 fusion Antibody, Urinary stone protein Antibody, Uropontin Antibody, Osteopontin Antibody, Bone sialoprotein I Antibody
Host	SPP1 antibody was produced in Mouse
Clonality:	Monoclonal
Isotype:	IgG2b,k
Clone Name:	X1
Immunogen Species:	SPP1 / Osteopontin antibody was raised against Human
Antigen Type:	Recombinant protein
Immunogen:	SPP1 / Osteopontin antibody was raised against recombinant protein
Specificity:	Human Osteopontin
Reactivity:	Human
Purification:	Protein A purified
Presentation:	PBS, pH 7.4
Recommended Storage:	Short term 4°C, long term aliquot and store at -20°C, avoid freeze thaw cycles.
Usage Summary:	Immunohistochemistry: Formalin-fixed paraffin-embedded sections. Sandwich ELISA: Recombinant protein. Western Blot with the recombinant protein used as the immunogen.
Uses:	IHC - Paraffin (5 µg/ml), Western blot, ELISA (Optimal dilution to be determined by the researcher)
Size:	50 µg
Concentration:	0.34 mg/ml

Immunohistochemistry Image:



Anti-Osteopontin antibody IHC of human kidney, tubules. Immunohistochemistry of formalin-fixed, paraffin-embedded tissue after heat-induced antigen retrieval. Antibody LS-B5940 concentration 5 ug/ml.

ELISA Image:



Detection limit for recombinant GST tagged SPP1 is approximately 0.3 ng/ml as a capture antibody.

Requested From:

Japan

Laboratory Reagent For In Vitro Research Use Only

Not for resale without prior written consent from LifeSpan BioSciences, Inc.

Created on 9/24/2014

© 2014 LifeSpan BioSciences