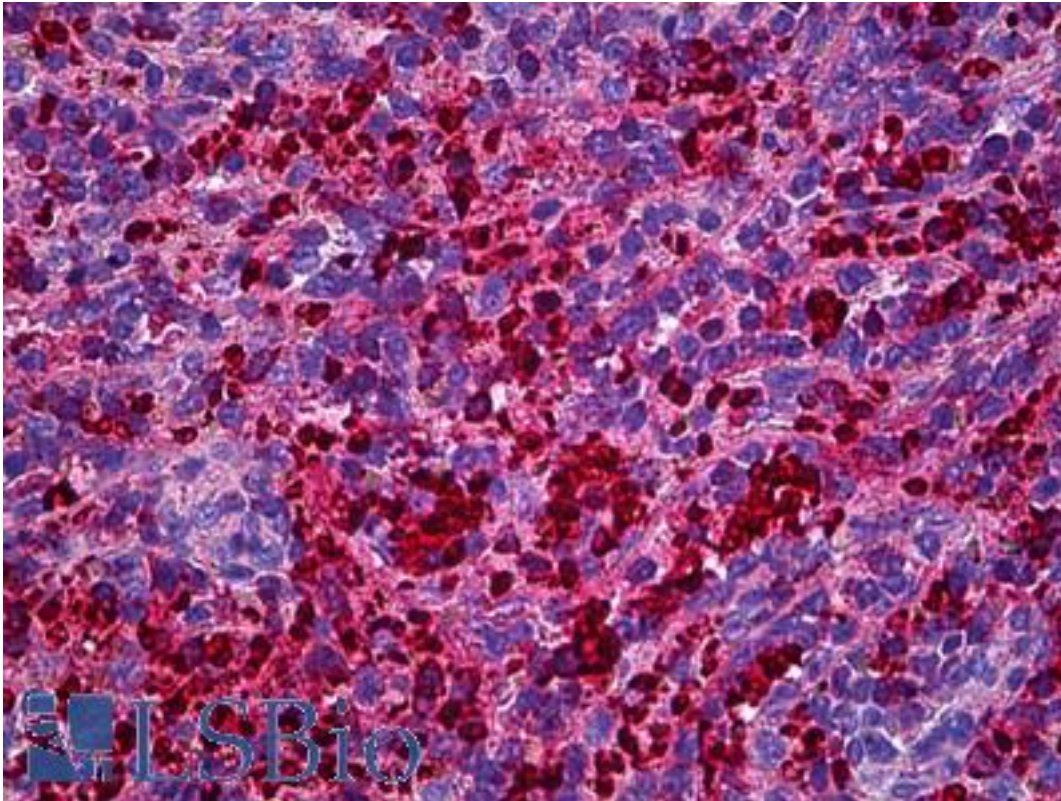


XCL1 / Lymphotactin Mouse anti-Human Monoclonal (1E1) Antibody - LS-B5938 - LSBio	
CatalogID:	LS-B5938
Validation:	This antibody replaces catalog number LS-C133942. It has been validated for use in the following assays: IHC-P.
Target:	chemokine (C motif) ligand 1 (XCL1)
Synonyms:	XCL1 Antibody, ATAC Antibody, C motif chemokine 1 Antibody, Chemokine (C motif) ligand 1 Antibody, Cytokine SCM-1 Antibody, Cytokine scm Antibody, LPTN Antibody, SCM-1 Antibody, SCM-1-alpha Antibody, SCM-1a Antibody, SCM1 Antibody, SCYC1 Antibody, Scyc2 Antibody, Single cysteine motif 1a Antibody, Lymphotaxin Antibody, Xc chemokine ligand Antibody, LTN Antibody, Lymphotactin Antibody, SCM1A Antibody, Small-inducible cytokine C1 Antibody, XC chemokine ligand 1 Antibody
Family / Subfamily:	Intercrine / Intercrine gamma
Host	XCL1 antibody was produced in Mouse
Clonality:	Monoclonal
Isotype:	IgG2a,k
Clone Name:	1E1
Immunogen Species:	XCL1 / Lymphotactin antibody was raised against Human
Antigen Type:	Recombinant protein
Immunogen:	XCL1 / Lymphotactin antibody was raised against recombinant protein
Specificity:	Human XCL1
Reactivity:	Human
Purification:	Protein A purified
Presentation:	PBS, pH 7.4. Sourced in Ascites.
Recommended Storage:	Short term 4°C, long term aliquot and store at -20°C, avoid freeze thaw cycles.
Usage Summary:	Immunohistochemistry: Formalin-fixed paraffin-embedded sections. Sandwich ELISA: Recombinant protein. Western Blot with the recombinant protein used as the immunogen.
Uses:	IHC - Paraffin (5 µg/ml), Western blot, ELISA (Optimal dilution to be determined by the researcher)
Size:	50 µg
Concentration:	0.5 mg/ml

Immunohistochemistry Image:



Anti-XCL1 / Lymphotoxin antibody IHC of human spleen. Immunohistochemistry of formalin-fixed, paraffin-embedded tissue after heat-induced antigen retrieval. Antibody LS-B5938 concentration 5 ug/ml.

Requested From:

Japan

Laboratory Reagent For In Vitro Research Use Only

Not for resale without prior written consent from LifeSpan BioSciences, Inc.

Created on 9/24/2014

© 2014 LifeSpan BioSciences