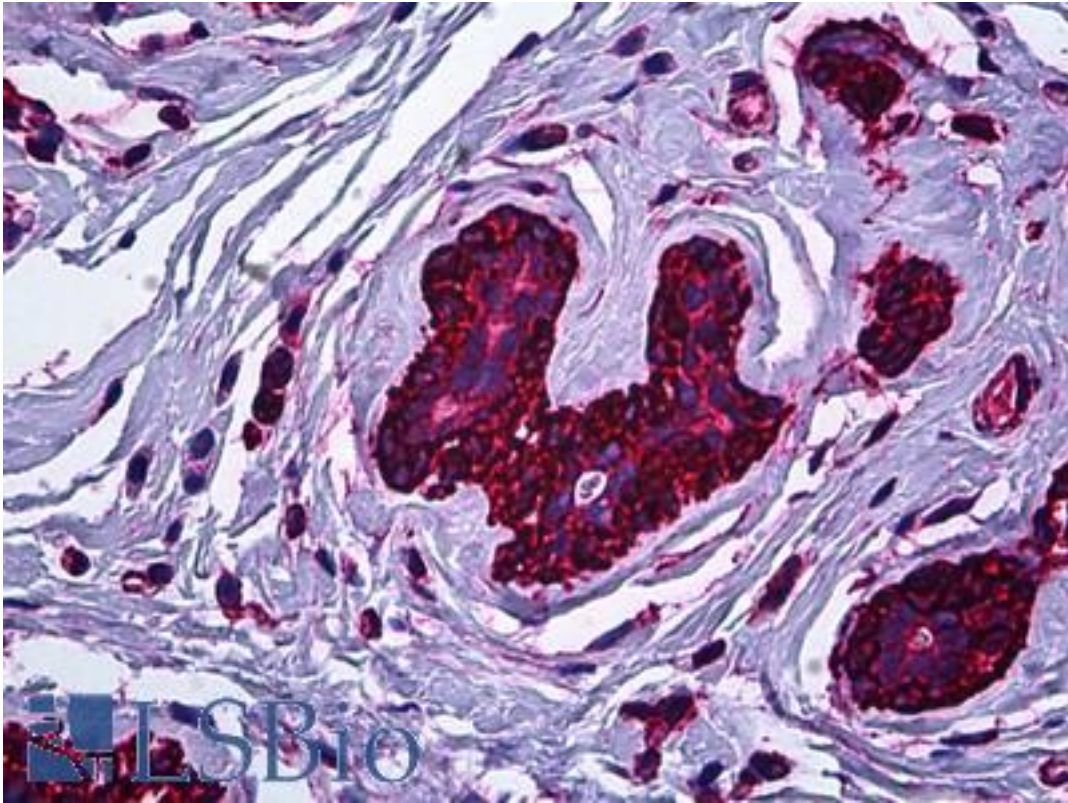


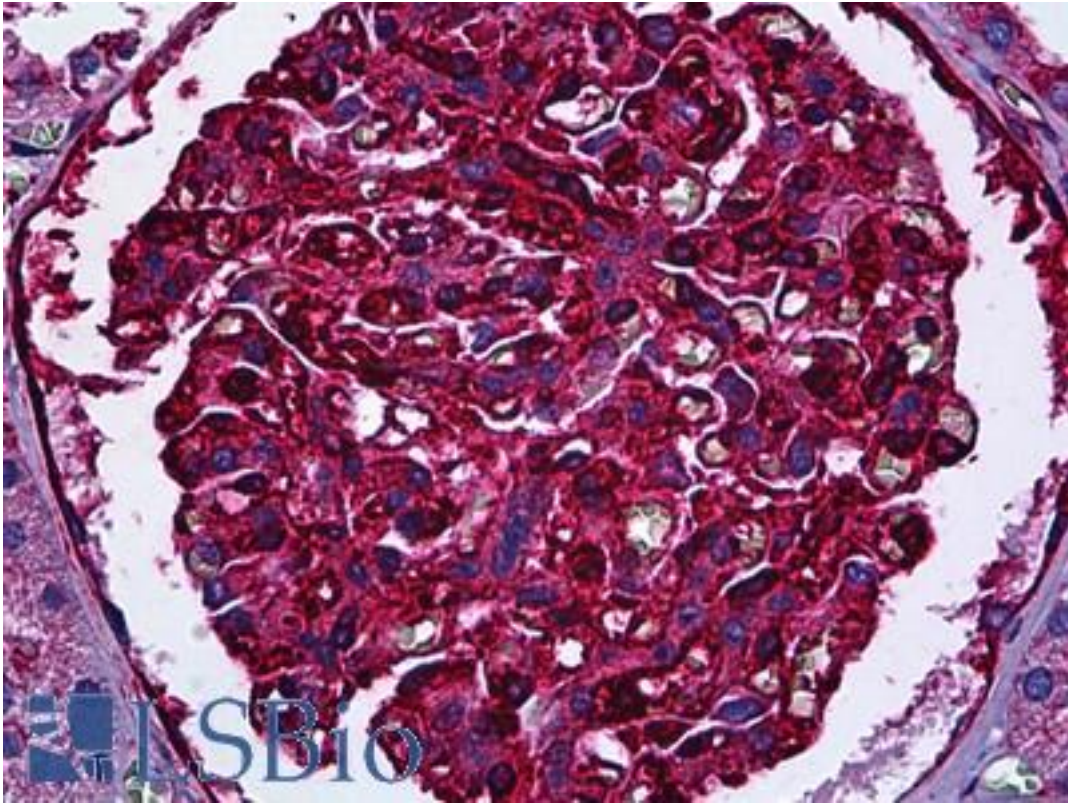
| MYH9 Mouse anti-Human Monoclonal (2B3) Antibody - LS-B5936 - LSBio |  |
|--|--|
| <b>CatalogID:</b>  | LS-B5936   |
| <b>Validation:</b>   | This antibody replaces catalog number LS-C133917. It has been validated for use in the following assays: IHC-P.  |
| <b>Target:</b>   | myosin, heavy chain 9, non-muscle (MYH9)   |
| <b>Synonyms:</b>   | MYH9 Antibody, BDPLT6 Antibody, FTNS Antibody, MHA Antibody, Myosin heavy chain 9 Antibody, NMMHC-IIA Antibody, NMMHC-A Antibody, Myosin-9 Antibody, NMMHC II-a Antibody, DFNA17 Antibody, EPSTS Antibody, NMHC-II-A Antibody, NMMHCA Antibody |
| <b>Host</b>  | MYH9 antibody was produced in Mouse  |
| <b>Clonality:</b>  | Monoclonal   |
| <b>Isotype:</b>  | IgG2b,k  |
| <b>Clone Name:</b>   | 2B3  |
| <b>Immunogen Species:</b>  | MYH9 antibody was raised against Human   |
| <b>Antigen Type:</b>   | Recombinant protein  |
| <b>Immunogen:</b>  | MYH9 antibody was raised against recombinant protein   |
| <b>Specificity:</b>  | Human MYH9   |
| <b>Reactivity:</b>   | Human  |
| <b>Purification:</b>   | Protein A purified   |
| <b>Presentation:</b>   | PBS, pH 7.2. Sourced in Ascites.   |
| <b>Recommended Storage:</b>  | Short term 4°C, long term aliquot and store at -20°C, avoid freeze thaw cycles.  |
| <b>Usage Summary:</b>  | Immunohistochemistry: Formalin-fixed paraffin-embedded sections. Sandwich ELISA: Recombinant protein. Western Blot using tissue lysates and the recombinant protein used as the immunogen.   |
| <b>Uses:</b>   | IHC - Paraffin (5 µg/ml), Immunofluorescence (10 µg/ml), Western blot, ELISA (Optimal dilution to be determined by the researcher)   |
| <b>Size:</b>   | 50 µg  |
| <b>Concentration:</b>  | 1 mg/ml  |

**Immunohistochemistry Image:**



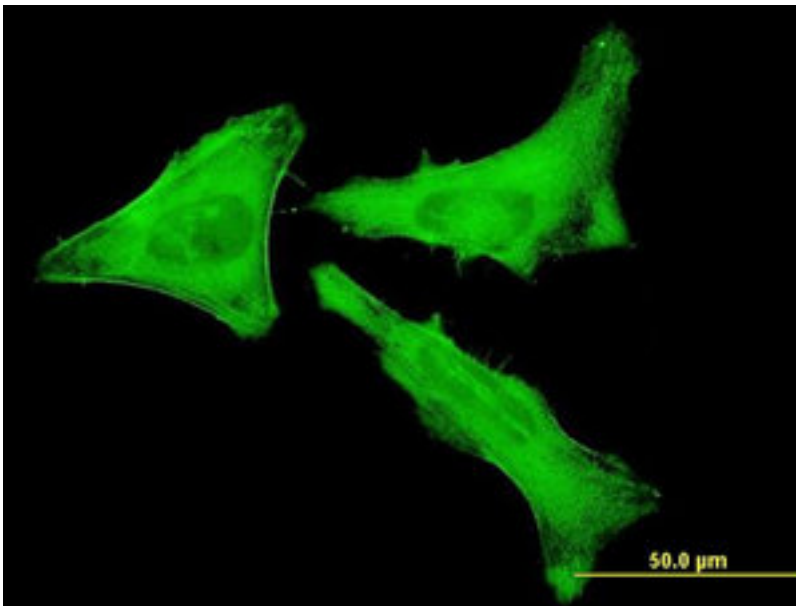
Anti-MYH9 antibody IHC of human breast. Immunohistochemistry of formalin-fixed, paraffin-embedded tissue after heat-induced antigen retrieval. Antibody LS-B5936 concentration 5 ug/ml.

**Immunohistochemistry Image:**



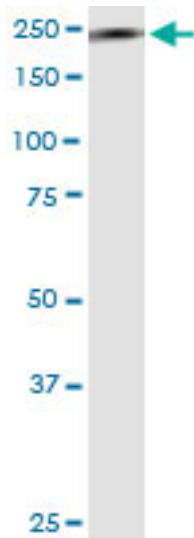
Anti-MYH9 antibody IHC of human kidney, glomeruli. Immunohistochemistry of formalin-fixed, paraffin-embedded tissue after heat-induced antigen retrieval. Antibody LS-B5936 concentration 5 ug/ml.

**Immunofluorescence Image:**



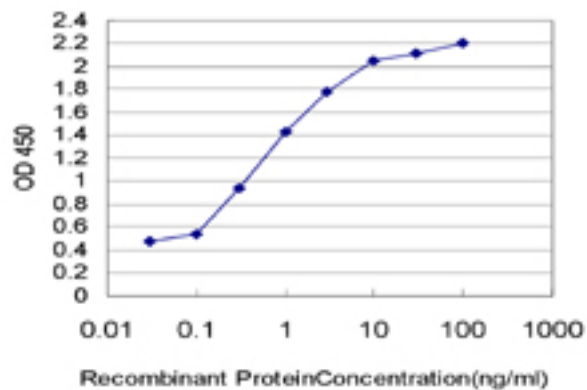
Immunofluorescence of monoclonal antibody to MYH9 on HeLa cell. [antibody concentration 10 ug/ml].

**Western Blot Image:**



MYH9 monoclonal antibody, clone 2B3. Western blot of MYH9 expression in human kidney.

**ELISA Image:**



Detection limit for recombinant GST tagged MYH9 is approximately 0.03 ng/ml as a capture antibody.

**Requested From:**

Japan

Laboratory Reagent For In Vitro Research Use Only

Not for resale without prior written consent from LifeSpan BioSciences, Inc.

Created on 9/24/2014

© 2014 LifeSpan BioSciences