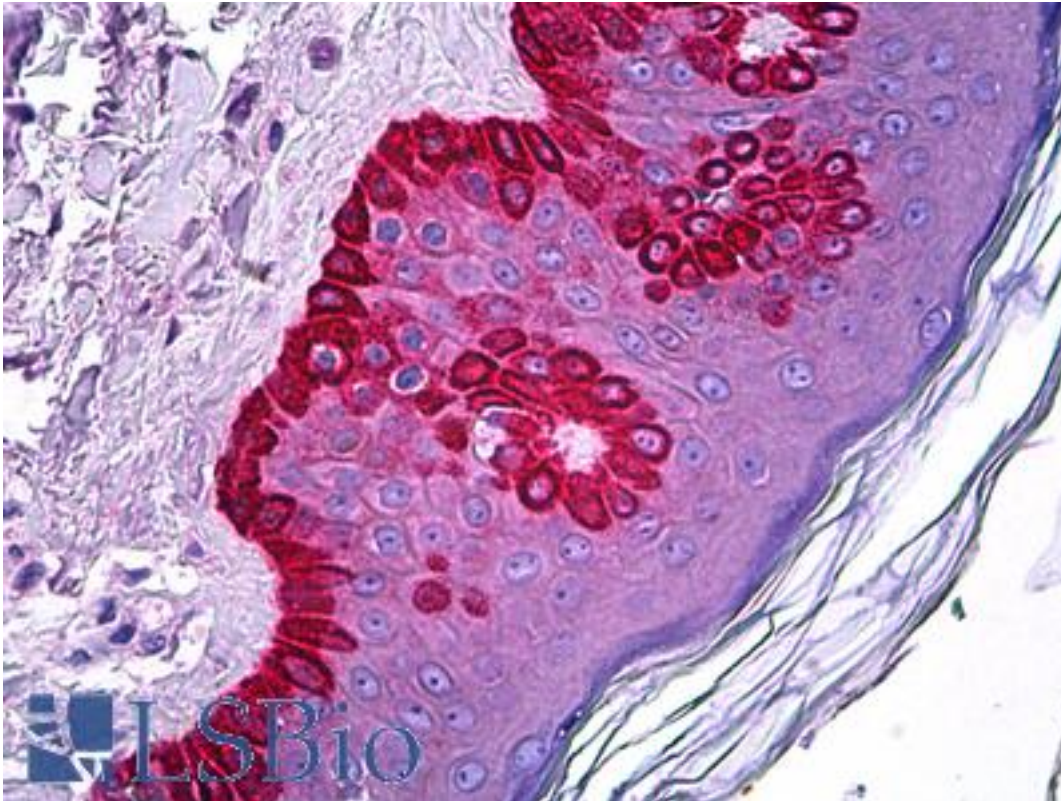


CELA1 / Elastase Mouse anti-Human Monoclonal (4H5) Antibody - LS-B5934 - LSBio

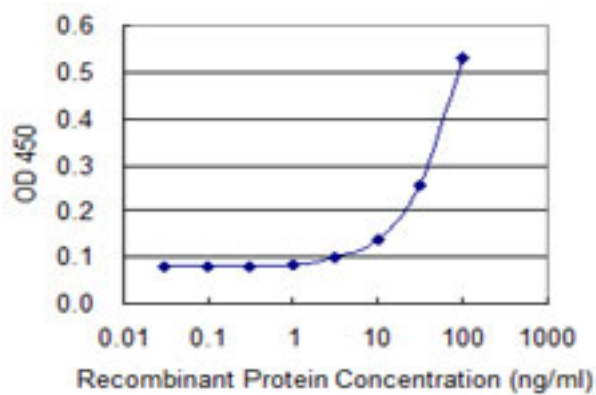
CatalogID:	LS-B5934
Validation:	This antibody replaces catalog number LS-C133882. It has been validated for use in the following assays: IHC-P.
Target:	chymotrypsin-like elastase family, member 1 (CELA1)
Synonyms:	CELA1 Antibody, EI1a Antibody, Elastase I Antibody, ELA1 Antibody, Elastase 1, pancreatic Antibody, Elastase-1 Antibody, Pancreatic elastase Antibody, Pancreatic elastase I Antibody, Porcine pancreatic elastase Antibody, Pancreatic elastase 1 Antibody, Elastase Antibody
Family / Subfamily:	Protease / Serine S1
Host	CELA1 antibody was produced in Mouse
Clonality:	Monoclonal
Isotype:	IgG2a,k
Clone Name:	4H5
Immunogen Species:	CELA1 / Elastase antibody was raised against Human
Antigen Type:	Recombinant protein
Immunogen:	CELA1 / Elastase antibody was raised against recombinant protein
Specificity:	Human Pancreatic Elastase 1
Reactivity:	Human
Purification:	Protein A purified
Presentation:	PBS, pH 7.2
Recommended Storage:	Short term 4°C, long term aliquot and store at -20°C, avoid freeze thaw cycles.
Usage Summary:	Immunohistochemistry: Formalin-fixed paraffin-embedded sections. Sandwich ELISA: Recombinant protein. Western Blot with the recombinant protein used as the immunogen.
Uses:	IHC - Paraffin (5 µg/ml), Western blot, ELISA (Optimal dilution to be determined by the researcher)
Size:	50 µg
Concentration:	1 mg/ml

Immunohistochemistry Image:



Anti-CELA1 antibody IHC of human skin. Immunohistochemistry of formalin-fixed, paraffin-embedded tissue after heat-induced antigen retrieval. Antibody LS-B5934 concentration 5 ug/ml.

ELISA Image:



Detection limit for recombinant GST tagged ELA1 is 3 ng/ml as a capture antibody.

Requested From:

Japan

Laboratory Reagent For In Vitro Research Use Only

Not for resale without prior written consent from LifeSpan BioSciences, Inc.

Created on 9/24/2014

© 2014 LifeSpan BioSciences