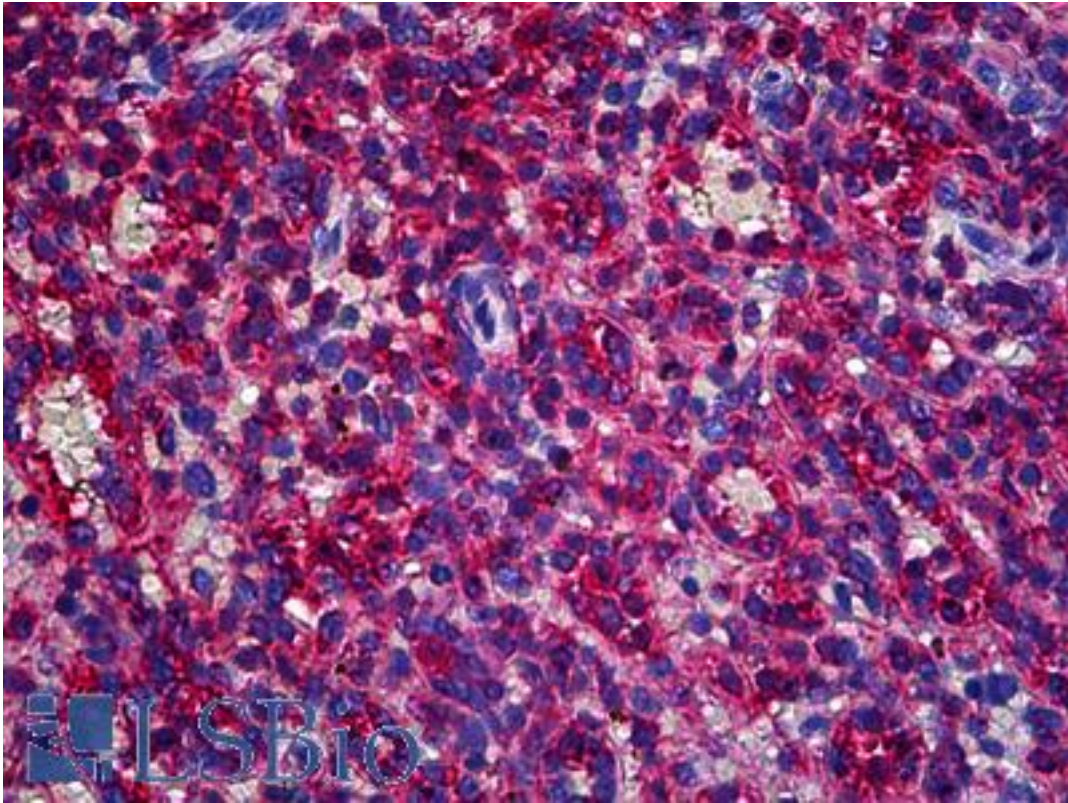


CAPZ / CAPZB Mouse anti-Human Monoclonal (1H1) Antibody - LS-B5931 - LSBio

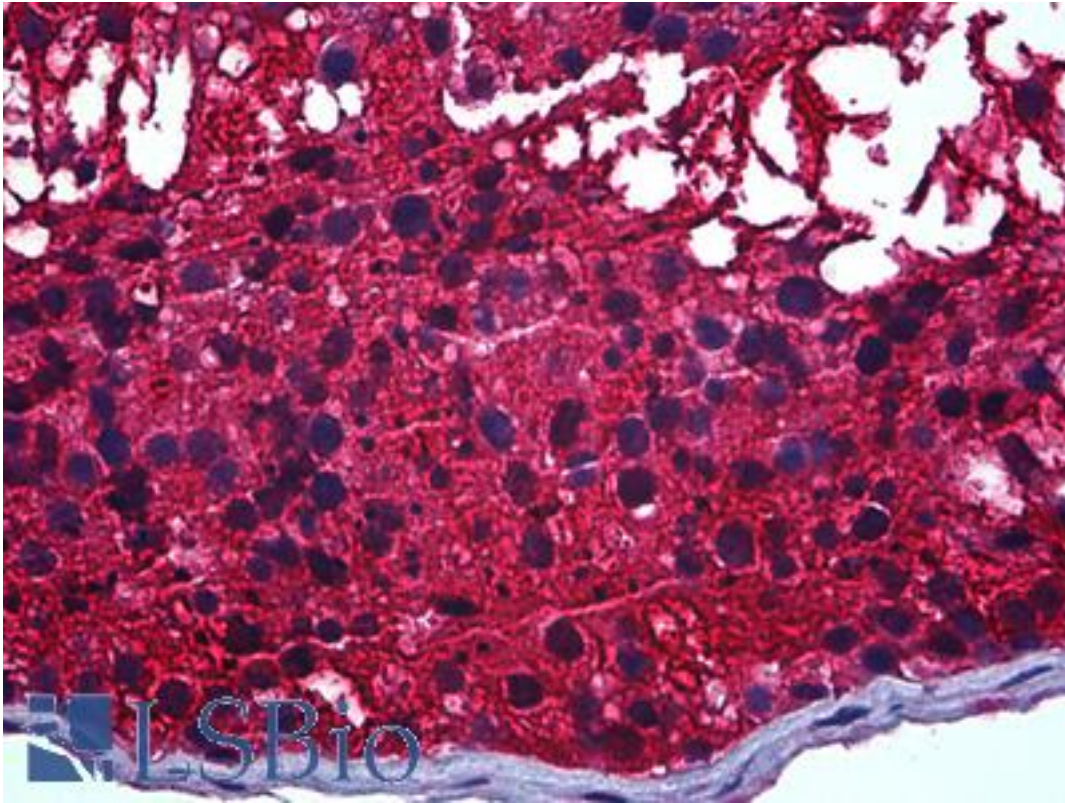
CatalogID:	LS-B5931
Validation:	This antibody replaces catalog number LS-C133868. It has been validated for use in the following assays: IHC-P.
Target:	capping protein (actin filament) muscle Z-line, beta (CAPZB)
Synonyms:	CAPZB Antibody, CAPB Antibody, CapZ beta Antibody, CAPPB Antibody, CAPZ Antibody
Host	CAPZB antibody was produced in Mouse
Clonality:	Monoclonal
Isotype:	IgG2a,k
Clone Name:	1H1
Immunogen Species:	CAPZ / CAPZB antibody was raised against Human
Antigen Type:	Recombinant protein
Immunogen:	CAPZ / CAPZB antibody was raised against recombinant protein
Specificity:	Human CAPZB
Reactivity:	Human
Purification:	Protein A purified
Presentation:	PBS, pH 7.4.
Recommended Storage:	Short term 4°C, long term aliquot and store at -20°C, avoid freeze thaw cycles.
Usage Summary:	Immunohistochemistry: Formalin-fixed paraffin-embedded sections. Sandwich ELISA: Recombinant protein. Western Blot using cell line lysates and the recombinant protein used as the immunogen.
Uses:	IHC - Paraffin (5 µg/ml), Western blot, ELISA (Optimal dilution to be determined by the researcher)
Size:	50 µg
Concentration:	0.37 mg/ml

Immunohistochemistry Image:



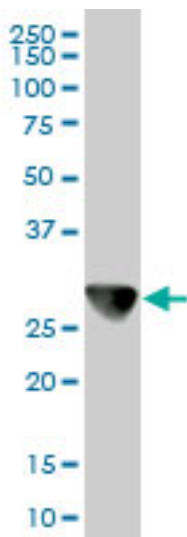
Anti-CAPZB antibody IHC of human spleen. Immunohistochemistry of formalin-fixed, paraffin-embedded tissue after heat-induced antigen retrieval. Antibody LS-B5931 concentration 5 ug/ml.

Immunohistochemistry Image:



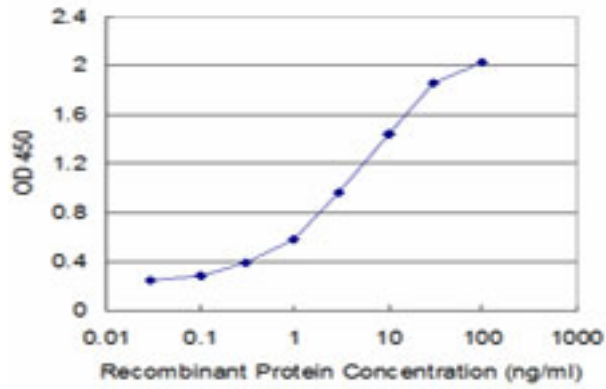
Anti-CAPZB antibody IHC of human testis. Immunohistochemistry of formalin-fixed, paraffin-embedded tissue after heat-induced antigen retrieval. Antibody LS-B5931 concentration 5 ug/ml.

Western Blot Image:



CAPZB monoclonal antibody, clone 1H1. Western blot of CAPZB expression in HeLa.

ELISA Image:



Detection limit for recombinant GST tagged CAPZB is approximately 0.1 ng/ml as a capture antibody.

Requested From:

Japan

Laboratory Reagent For In Vitro Research Use Only

Not for resale without prior written consent from LifeSpan BioSciences, Inc.

Created on 9/24/2014

© 2014 LifeSpan BioSciences