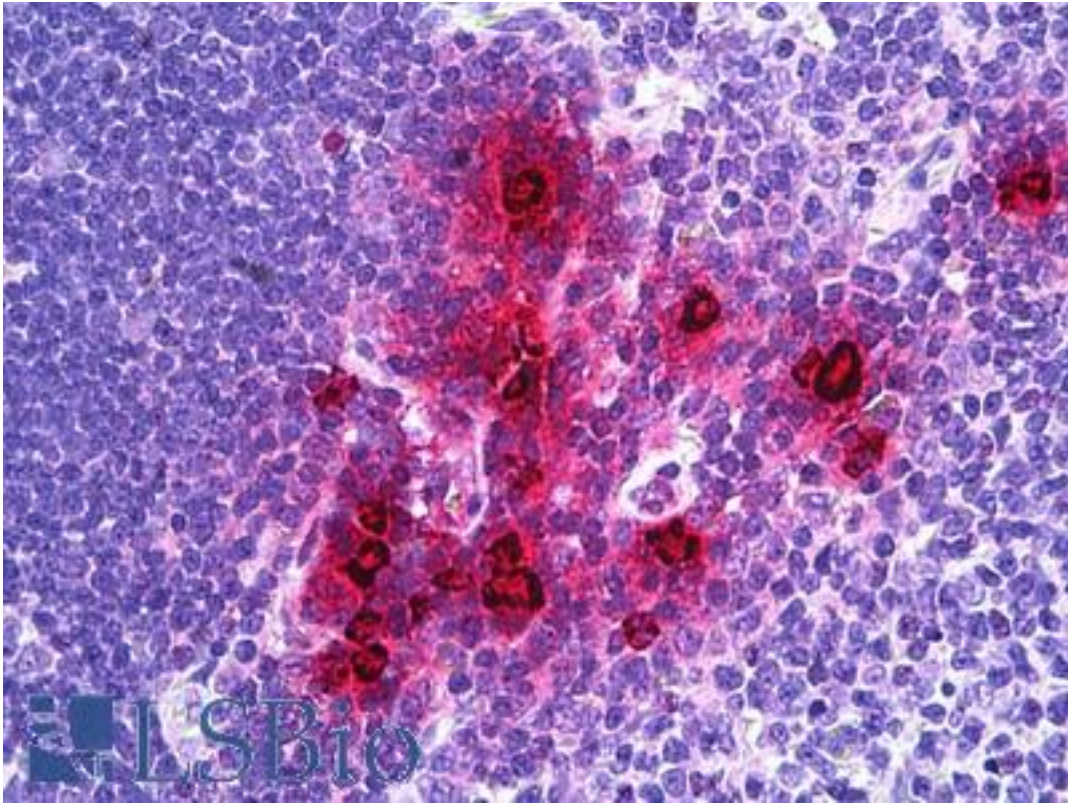


**DEFA1 / HP1 Goat anti-Human Polyclonal (Internal) Antibody - LS-B5920 - LSBio**

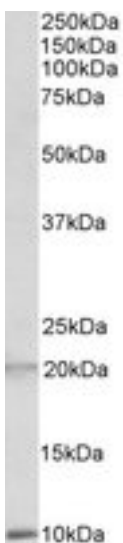
<b>CatalogID:</b>	LS-B5920
<b>Validation:</b>	This antibody replaces catalog number LS-C112909. It has been validated for use in the following assays: IHC-P.
<b>Target:</b>	defensin, alpha 1 (DEFA1)
<b>Synonyms:</b>	DEFA1 Antibody, DEFA2 Antibody, Defensin, alpha 2 Antibody, HP-1 Antibody, HP1 Antibody, Myeloid-related sequence Antibody, MRS Antibody, DEF1 Antibody, Defensin, alpha 1 Antibody, HNP-1 Antibody, Neutrophil defensin 1 Antibody
<b>Host</b>	DEFA1 antibody was produced in Goat
<b>Clonality:</b>	Polyclonal
<b>Immunogen Species:</b>	DEFA1 / HP1 antibody was raised against Human
<b>Antigen Type:</b>	Synthetic peptide
<b>Immunogen:</b>	DEFA1 / HP1 antibody was raised against synthetic peptide C-DESLAPKHPGSRKN from an internal region of human DEFA1 (NP_004075.1; NP_005208.1). Percent identity by BLAST analysis: Human, Chimpanzee, Gorilla (100%); Gibbon (86%).
<b>Specificity:</b>	Human DEFA1. This antibody is expected to equally recognize DEFA1 precursor and DEFA3 precursor.
<b>Epitope:</b>	Internal
<b>Reactivity:</b>	Human, Chimpanzee, Gorilla
<b>Purification:</b>	Immunoaffinity purified
<b>Presentation:</b>	Tris-buffered saline, pH 7.3, 0.5% BSA, 0.02% sodium azide
<b>Recommended Storage:</b>	Store at -20°C. Minimize freezing and thawing.
<b>Usage Summary:</b>	Peptide ELISA: antibody detection limit dilution 1:128000. Western blot: Approx 10kDa band observed in Human Spleen lysates (calculated MW of 10.2kDa according to NP_004075.1). Recommended concentration: 1-3 ug/ml. An additional band of unknown identity was also consistently observed at 20kDa. This band was successfully blocked by incubation with the immunizing peptide.
<b>Uses:</b>	IHC - Paraffin (3.75 µg/ml), Western blot (1 - 3 µg/ml), ELISA (1:128000) (Optimal dilution to be determined by the researcher)
<b>Size:</b>	50 µg
<b>Concentration:</b>	0.5 mg/ml

**Immunohistochemistry Image:**



Anti-DEFA1 / NP-1 antibody IHC of human thymus, myeloid cells. Immunohistochemistry of formalin-fixed, paraffin-embedded tissue after heat-induced antigen retrieval. Antibody LS-B5920 concentration 3.75 ug/ml.

**Western Blot Image:**



DEFA1 antibody (2 ug/ml) staining of Human Spleen lysate (35 ug protein/ml in RIPA buffer). Primary incubation was 1 hour. Detected by chemiluminescence.

**Requested From:**

Japan

Laboratory Reagent For In Vitro Research Use Only

Not for resale without prior written consent from LifeSpan BioSciences, Inc.

Created on 9/24/2014

© 2014 LifeSpan BioSciences