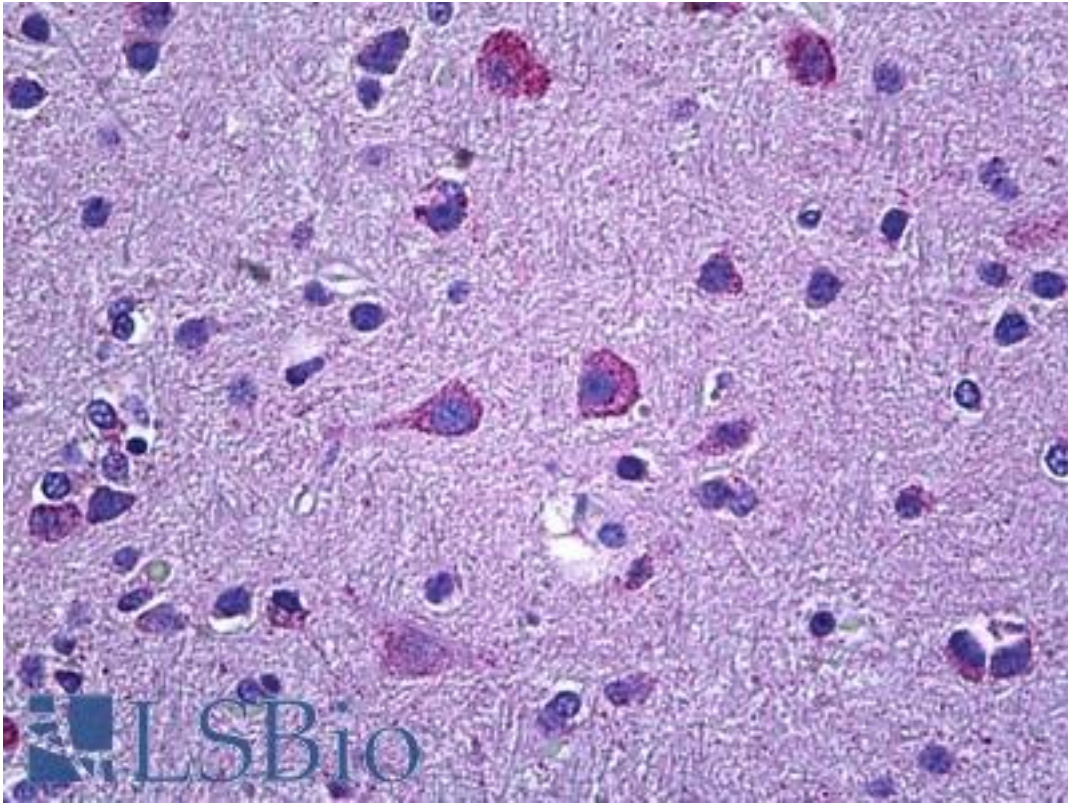


PROKR2/Prokineticin Receptor 2 Goat anti-Human Polyclonal (Internal) Antibody - LS-B5918 - LSBio

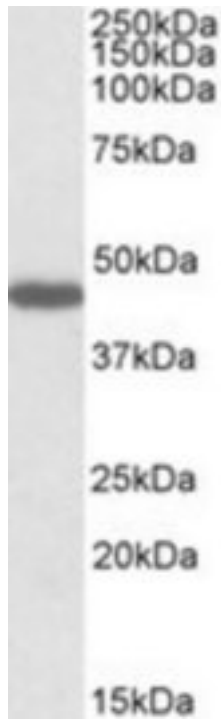
CatalogID:	LS-B5918
Validation:	This antibody replaces catalog number LS-C112892. It has been validated for use in the following assays: IHC-P.
Target:	prokineticin receptor 2 (PROKR2)
Synonyms:	PROKR2 Antibody, DJ680N4.3 Antibody, GPCR73B Antibody, HH3 Antibody, GPR73b Antibody, KAL3 Antibody, GPRg2 Antibody, Prokineticin receptor 2 Antibody, PK-R2 Antibody, PKR2 Antibody, GPR73L1 Antibody
Family / Subfamily:	GPCR / Prokineticin
Host	PROKR2 antibody was produced in Goat
Clonality:	Polyclonal
Immunogen Species:	PROKR2/Prokineticin Receptor 2 antibody was raised against Human
Antigen Type:	Synthetic peptide
Immunogen:	PROKR2/Prokineticin Receptor 2 antibody was raised against synthetic peptide C-NGNTSFTPNFN from an internal region of human PROKR2 (NP_658986.1). Percent identity by BLAST analysis: Human, Gibbon (100%); Monkey, Marmoset, Horse, Rabbit (91%); Elephant (82%).
Specificity:	Human PROKR2.
Epitope:	Internal
Reactivity:	Human, Gibbon, Rat
Predicted Reactivity:	Monkey, Horse, Rabbit
Purification:	Immunoaffinity purified
Presentation:	Tris-buffered saline, pH 7.3, 0.5% BSA, 0.02% sodium azide
Recommended Storage:	Store at -20°C. Minimize freezing and thawing.
Usage Summary:	Peptide ELISA: antibody detection limit dilution 1:32000. Western blot: Approx 45kDa band observed in Human Testis, Human Thyroid Gland and in Rat Stomach lysates (calculated MW of 44kDa according to Human NP_658986.1 and 47.9kDa according to Rat NP_620434.1). Recommended concentration: 0.3-1 ug/ml.
Uses:	IHC - Paraffin (3.75 µg/ml), Western blot (0.3 - 1 µg/ml), ELISA (1:32000) (Optimal dilution to be determined by the researcher)
Size:	50 µg
Concentration:	0.5 mg/ml

Immunohistochemistry Image:



Anti-PROKR2 antibody IHC of human brain, cortex. Immunohistochemistry of formalin-fixed, paraffin-embedded tissue after heat-induced antigen retrieval. Antibody LS-B5918 concentration 3.75 ug/ml.

Western Blot Image:



PROKR2 antibody (1 ug/ml) staining of Rat Stomach lysate (35 ug protein/ml in RIPA buffer). Primary incubation was 1 hour. Detected by chemiluminescence.

Requested From:

Japan

Laboratory Reagent For In Vitro Research Use Only

Not for resale without prior written consent from LifeSpan BioSciences, Inc.

Created on 9/24/2014

© 2014 LifeSpan BioSciences