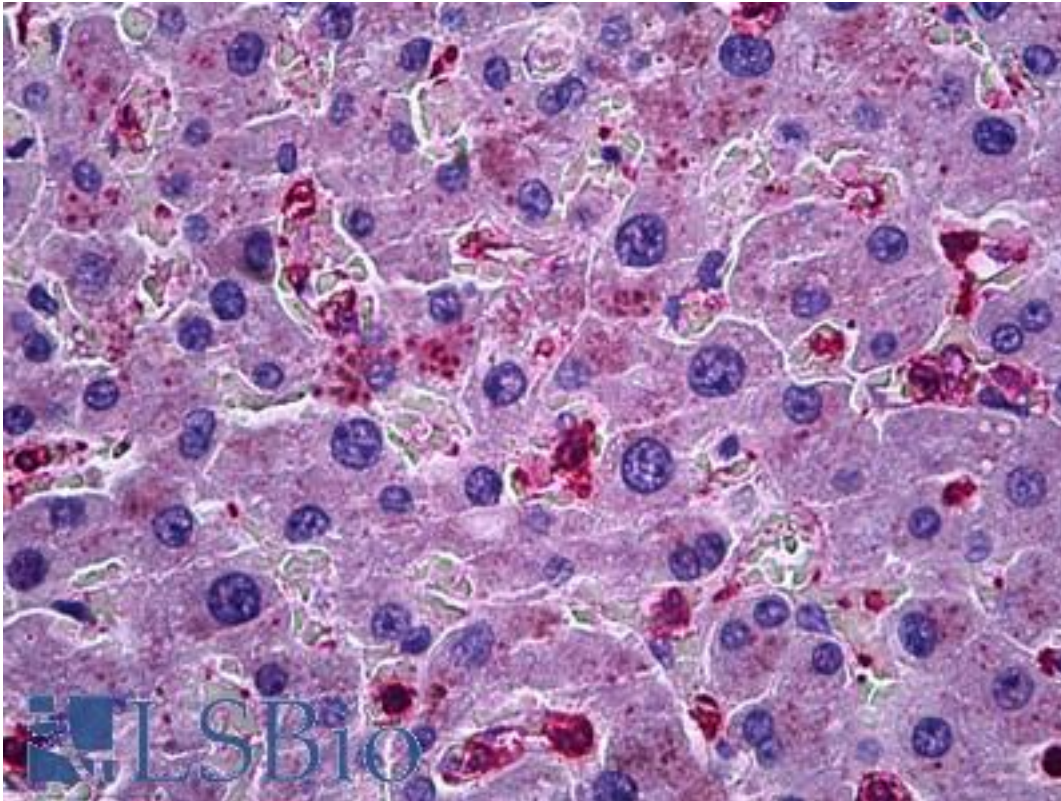


CCL20 / MIP-3-Alpha Goat anti-Human Polyclonal (Internal) Antibody - LS-B5917 - LSBio	
<b>CatalogID:</b>	LS-B5917
<b>Validation:</b>	This antibody replaces catalog number LS-C112888. It has been validated for use in the following assays: IHC-P.
<b>Target:</b>	chemokine (C-C motif) ligand 20 (CCL20)
<b>Synonyms:</b>	CCL20 Antibody, Beta chemokine exodus-1 Antibody, Beta-chemokine exodus-1 Antibody, CKb4 Antibody, Exodus-1 Antibody, MIP-3a Antibody, MIP-3-alpha Antibody, LARC Antibody, ST38 Antibody, SCYA20 Antibody, C-C motif chemokine 20 Antibody, CC chemokine LARC Antibody, Mip-3alpha Antibody, MIP3A Antibody, Small-inducible cytokine A20 Antibody
<b>Family / Subfamily:</b>	Interocrine / Interocrine beta
<b>Host</b>	CCL20 antibody was produced in Goat
<b>Clonality:</b>	Polyclonal
<b>Immunogen Species:</b>	CCL20 / MIP-3-Alpha antibody was raised against Human
<b>Antigen Type:</b>	Synthetic peptide
<b>Immunogen:</b>	CCL20 / MIP-3-Alpha antibody was raised against synthetic peptide CLGYTDRILHPK from an internal region of human CCL20 (NP_004582.1; NP_001123518.1). Percent identity by BLAST analysis: Human, Gorilla (100%); Gibbon, Monkey (92%).
<b>Specificity:</b>	Human CCL20. This antibody is expected to recognize both isoforms (NP_004582.1; NP_001123518.1).
<b>Epitope:</b>	Internal
<b>Reactivity:</b>	Human, Gorilla
<b>Predicted Reactivity:</b>	Gibbon, Monkey
<b>Purification:</b>	Immunoaffinity purified
<b>Presentation:</b>	Tris-buffered saline, pH 7.3, 0.5% BSA, 0.02% sodium azide
<b>Recommended Storage:</b>	Store at -20°C. Minimize freezing and thawing.
<b>Usage Summary:</b>	Peptide ELISA: antibody detection limit dilution 1:16000. Western blot: Preliminary experiments in Human Peripheral Blood Mononucleocytes lysates gave no specific signal but low background (at antibody concentration up to 2 ug/ml).
<b>Uses:</b>	IHC - Paraffin (6.13 µg/ml), ELISA (1:16000) (Optimal dilution to be determined by the researcher)
<b>Size:</b>	50 µg
<b>Concentration:</b>	0.5 mg/ml

**Immunohistochemistry Image:**



Anti-CCL20 antibody IHC of human liver. Immunohistochemistry of formalin-fixed, paraffin-embedded tissue after heat-induced antigen retrieval. Antibody LS-B5917 concentration 6.125 ug/ml.

**Requested From:**

Japan

Laboratory Reagent For In Vitro Research Use Only

Not for resale without prior written consent from LifeSpan BioSciences, Inc.

Created on 9/24/2014

© 2014 LifeSpan BioSciences