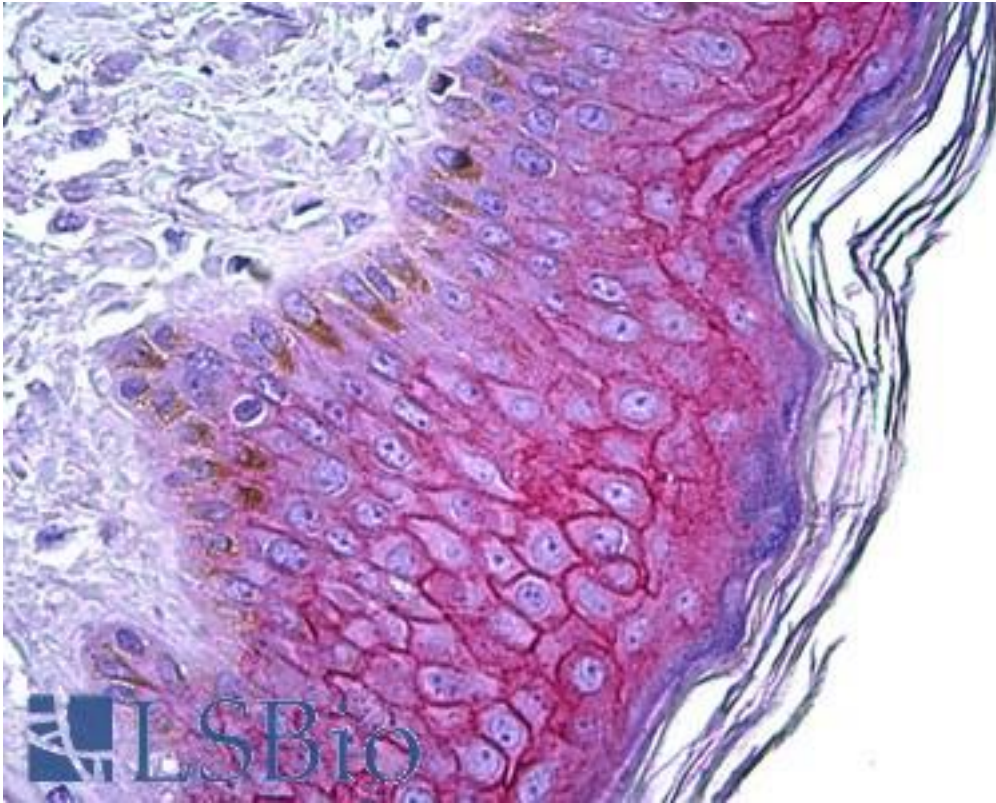


DSG1 / Desmoglein 1 Goat anti-Human Polyclonal (Internal) Antibody - LS-B5916 - LSBio	
<b>CatalogID:</b>	LS-B5916
<b>Validation:</b>	This antibody replaces catalog number LS-C112869. It has been validated for use in the following assays: IHC-P.
<b>Target:</b>	desmoglein 1 (DSG1)
<b>Synonyms:</b>	DSG1 Antibody, CDHF4 Antibody, Cadherin family member 4 Antibody, Desmoglein 1 Antibody, DG1 Antibody, Desmoglein-1 Antibody, Desmosomal glycoprotein 1 Antibody, SPPK1 Antibody, DGI Antibody, DSG Antibody, Pemphigus foliaceus antigen Antibody, PPKS1 Antibody
<b>Family / Subfamily:</b>	Cadherin / not assigned-Cadherin
<b>Host</b>	DSG1 antibody was produced in Goat
<b>Clonality:</b>	Polyclonal
<b>Immunogen Species:</b>	DSG1 / Desmoglein 1 antibody was raised against Human
<b>Antigen Type:</b>	Synthetic peptide
<b>Immunogen:</b>	DSG1 / Desmoglein 1 antibody was raised against synthetic peptide C-YTTSDLKPSVHVHD from an internal region of human DSG1 (NP_001933.2). Percent identity by BLAST analysis: Human, Gibbon (100%); Gorilla, Monkey, Marmoset, Panda (93%); Mouse, Rat, Dog, Rabbit, Horse, Pig (87%); Elephant, Bat, Bovine (80%).
<b>Specificity:</b>	Human DSG1.
<b>Epitope:</b>	Internal
<b>Reactivity:</b>	Human, Gibbon
<b>Predicted Reactivity:</b>	Gorilla, Monkey
<b>Purification:</b>	Immunoaffinity purified
<b>Presentation:</b>	Tris-buffered saline, pH 7.3, 0.5% BSA, 0.02% sodium azide
<b>Recommended Storage:</b>	Store at -20°C. Minimize freezing and thawing.
<b>Usage Summary:</b>	Peptide ELISA: antibody detection limit dilution 1:32000. Western blot: Preliminary experiments in lysates of cell lines A431, HeLa, K562 and MOLT4 gave no specific signal but low background (at antibody concentration up to 1 ug/ml).
<b>Uses:</b>	IHC - Paraffin (3.75 µg/ml), ELISA (1:32000) (Optimal dilution to be determined by the researcher)
<b>Size:</b>	50 µg
<b>Concentration:</b>	0.5 mg/ml

**Immunohistochemistry Image:**



Anti-DSG1 antibody IHC of human skin. Immunohistochemistry of formalin-fixed, paraffin-embedded tissue after heat-induced antigen retrieval. Antibody LS-B5916 concentration 3.75 ug/ml.

**Requested From:**

Japan

Laboratory Reagent For In Vitro Research Use Only

Not for resale without prior written consent from LifeSpan BioSciences, Inc.

Created on 9/24/2014

© 2014 LifeSpan BioSciences