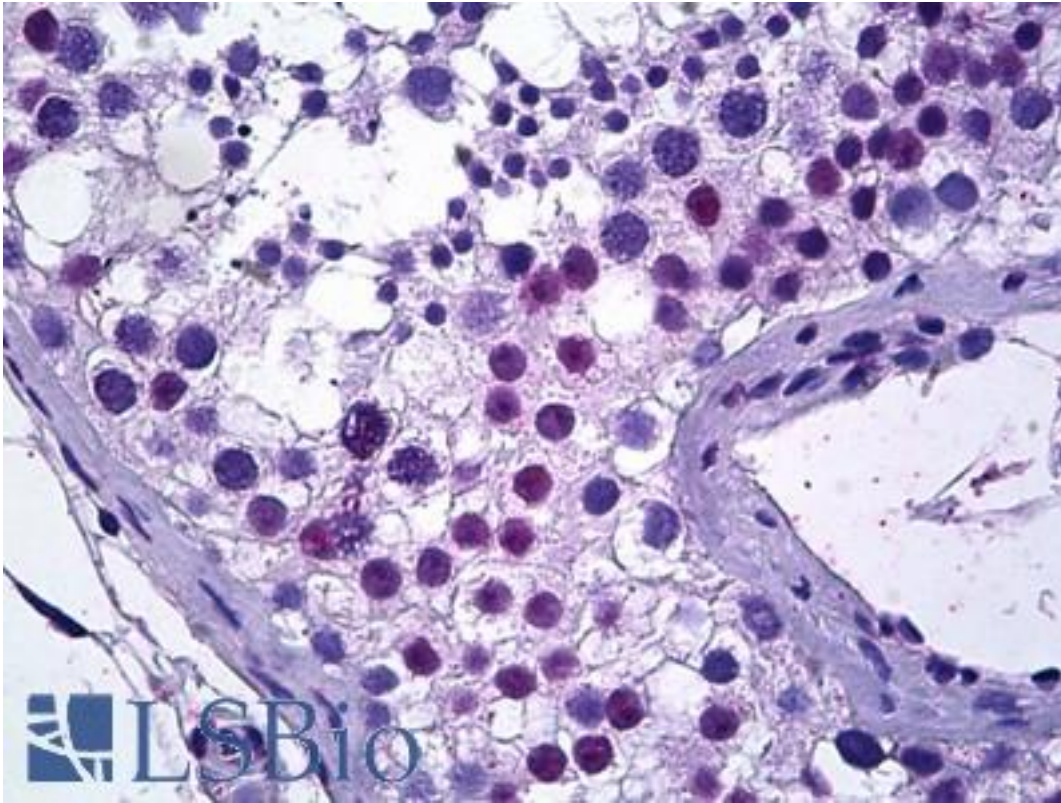


TSPYL2 / DENTT Goat anti-Human Polyclonal (C-Terminus) Antibody - LS-B5906 - LSBio	
CatalogID:	LS-B5906
Validation:	This antibody replaces catalog number LS-C112903. It has been validated for use in the following assays: IHC-P.
Target:	TSPY-like 2 (TSPYL2)
Synonyms:	TSPYL2 Antibody, CDA1 Antibody, CINAP Antibody, DENTT Antibody, CTCL Antibody, CTCL-associated antigen se20-4 Antibody, Cell division autoantigen 1 Antibody, HRIHFB2216 Antibody, Nuclear protein of 79 kDa Antibody, NP79 Antibody, TSPY-like protein 2 Antibody, SE20-4 Antibody, SE204 Antibody, TSPY-like 2 Antibody, CTCL tumor antigen se20-4 Antibody, TSPX Antibody
Host	TSPYL2 antibody was produced in Goat
Clonality:	Polyclonal
Immunogen Species:	TSPYL2 / DENTT antibody was raised against Human
Antigen Type:	Synthetic peptide
Immunogen:	TSPYL2 / DENTT antibody was raised against synthetic peptide C-PNGWANPGKRGKTG from the C-terminus of human TSPYL2 (NP_071400.1). Percent identity by BLAST analysis: Human, Gorilla, Gibbon, Monkey, Marmoset (100%); Panda, Dog, Horse (86%).
Specificity:	Human TSPYL2.
Epitope:	C-Terminus
Reactivity:	Human, Gorilla, Gibbon, Monkey
Purification:	Immunoaffinity purified
Presentation:	Tris-buffered saline, pH 7.3, 0.5% BSA, 0.02% sodium azide
Recommended Storage:	Store at -20°C. Minimize freezing and thawing.
Usage Summary:	Peptide ELISA: antibody detection limit dilution 1:8000. Western blot: Preliminary experiments in Human Testis lysates gave no specific signal but low background (at antibody concentration up to 1 ug/ml).
Uses:	IHC - Paraffin (5 µg/ml), ELISA (1:8000) (Optimal dilution to be determined by the researcher)
Size:	50 µg
Concentration:	0.5 mg/ml

Immunohistochemistry Image:



Anti-TSPYL2 antibody IHC of human testis. Immunohistochemistry of formalin-fixed, paraffin-embedded tissue after heat-induced antigen retrieval. Antibody LS-B5906 concentration 5 ug/ml.

Requested From:

Japan

Laboratory Reagent For In Vitro Research Use Only

Not for resale without prior written consent from LifeSpan BioSciences, Inc.

Created on 9/24/2014

© 2014 LifeSpan BioSciences