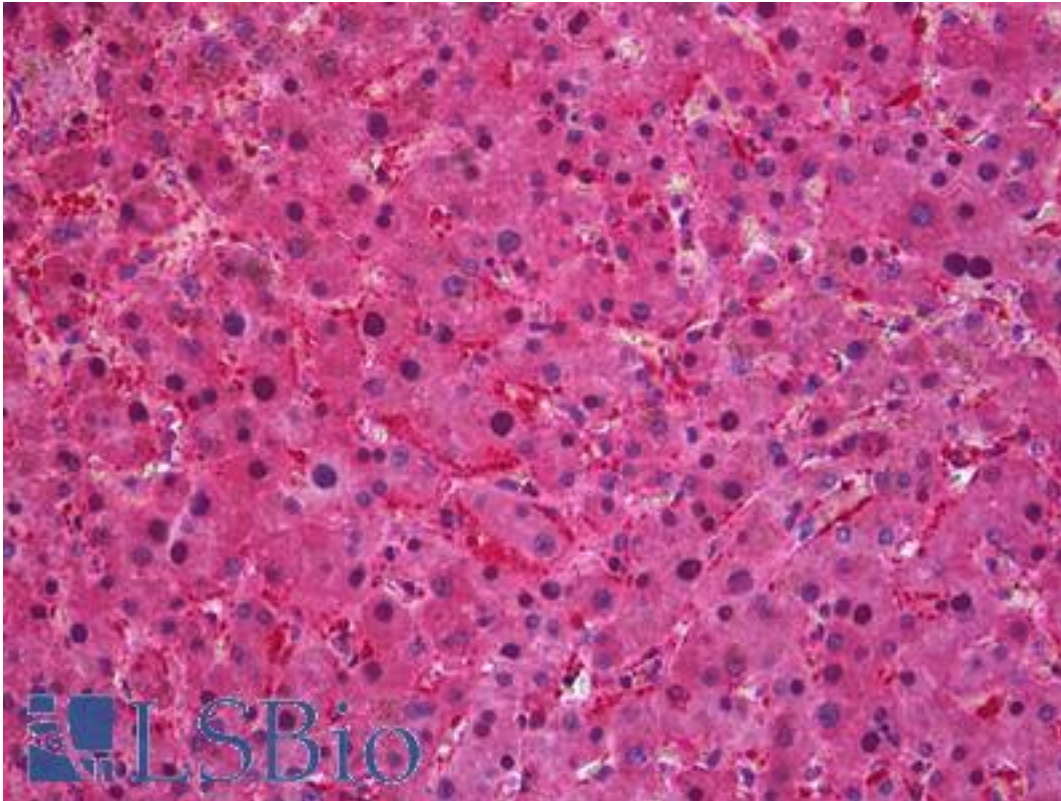


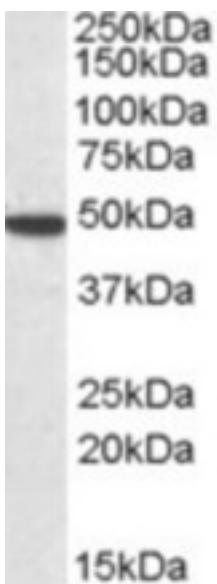
| SEC61A1 / SEC61 Goat anti-Human Polyclonal (aa463-476) Antibody - LS-B5905 - LSBio |   |
|--|---|
| <b>CatalogID:</b>  | LS-B5905  |
| <b>Validation:</b>   | This antibody replaces catalog number LS-C20209. It has been validated for use in the following assays: IHC-P.  |
| <b>Target:</b>   | Sec61 alpha 1 subunit ( <i>S. cerevisiae</i> ) (SEC61A1)  |
| <b>Synonyms:</b>   | SEC61A1 Antibody, HSEC61 Antibody, SEC61A Antibody, Sec61 alpha Antibody, Sec61 alpha-1 Antibody, Sec61 homolog Antibody, SEC61 Antibody  |
| <b>Family / Subfamily:</b>   | Transporter / General secretory pathway - Sec61 alpha   |
| <b>Host</b>  | SEC61A1 antibody was produced in Goat   |
| <b>Clonality:</b>  | Polyclonal  |
| <b>Immunogen Species:</b>  | SEC61A1 / SEC61 antibody was raised against Human   |
| <b>Antigen Type:</b>   | Synthetic peptide   |
| <b>Immunogen:</b>  | SEC61A1 / SEC61 antibody was raised against synthetic peptide C-KEQSEVGSMSGALLF from the C-terminus of human SEC61A1 / SEC61 (NP_037468.1). Percent identity by BLAST analysis: Human, Gorilla, Orangutan, Gibbon, Monkey, Marmoset, Mouse, Rat, Hamster, Elephant, Panda, Bat, Bovine, Dog, Horse, Rabbit, Pig, Opossum, Turkey, Chicken, Platypus, Lizard, Xenopus, Stickleback, Pufferfish, Zebrafish (100%); Trout, Seabass, Salmon (93%); Sea anemone (86%). |
| <b>Specificity:</b>  | Human SEC61A1 / SEC61.  |
| <b>Epitope:</b>  | aa463-476   |
| <b>Reactivity:</b>   | Human, Gorilla, Orangutan, Gibbon, Monkey, Mouse, Rat, Bat, Bovine, Dog, Hamster, Horse, Pig, Rabbit, Chicken, Xenopus, Zebrafish   |
| <b>Purification:</b>   | Immunoaffinity purified   |
| <b>Presentation:</b>   | Tris-buffered saline, pH 7.3, 0.5% BSA, 0.02% sodium azide  |
| <b>Recommended Storage:</b>  | Store at -20°C. Minimize freezing and thawing.  |
| <b>Uses:</b>   | IHC - Paraffin (3.75 µg/ml), Western blot (1 - 3 µg/ml), ELISA (1:8000) (Optimal dilution to be determined by the researcher)   |
| <b>Uses Not Recommended:</b>   | IHC - Paraffin  |
| <b>Size:</b>   | 50 µg   |
| <b>Concentration:</b>  | 0.5 mg/ml   |

**Immunohistochemistry Image:**



Anti-SEC61A1 / SEC61 antibody IHC of human liver. Immunohistochemistry of formalin-fixed, paraffin-embedded tissue after heat-induced antigen retrieval. Antibody LS-B5905 concentration 3.75 ug/ml.

**Western Blot Image:**



Staining (1 ug/ml) of human cerebellum lysate (35 ug protein in RIPA buffer). Primary incubation was 1 hour. Detected by chemiluminescence.

**Requested From:**

Japan

Laboratory Reagent For In Vitro Research Use Only

Not for resale without prior written consent from LifeSpan BioSciences, Inc.

Created on 9/24/2014

© 2014 LifeSpan BioSciences