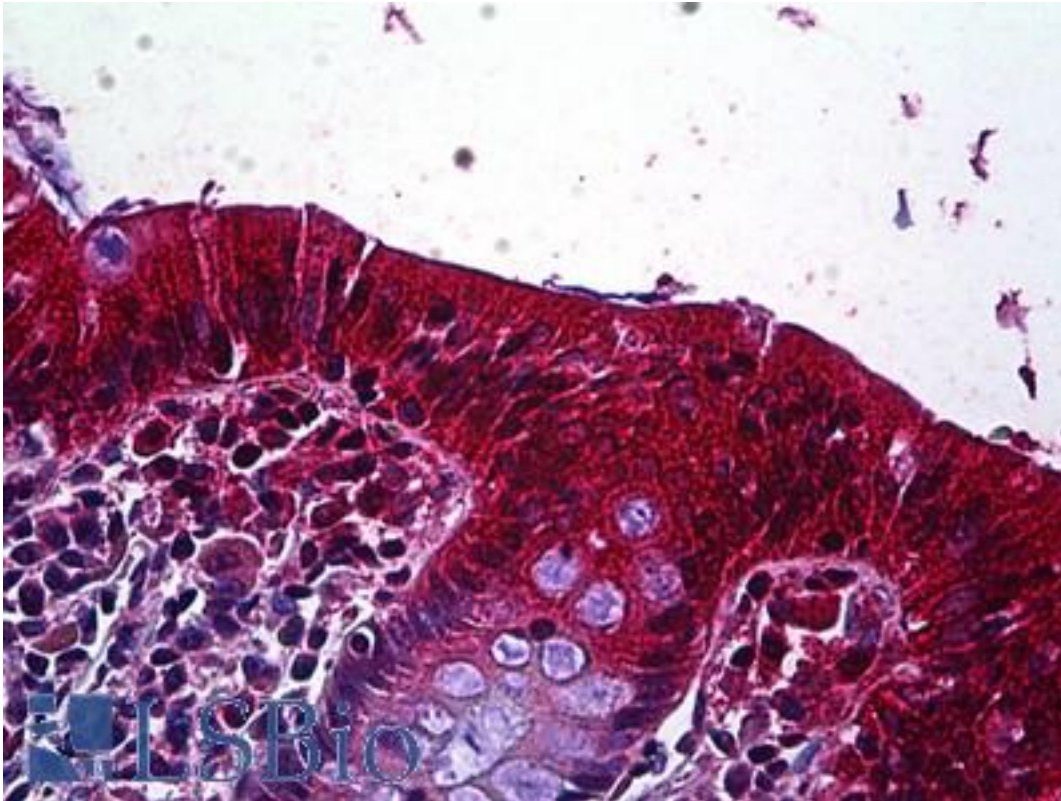


LRP4 Goat anti-Human Polyclonal (Internal) Antibody - LS-B5902 - LSBio	
CatalogID:	LS-B5902
Validation:	This antibody replaces catalog number LS-C112737. It has been validated for use in the following assays: IHC-P.
Target:	low density lipoprotein receptor-related protein 4 (LRP4)
Synonyms:	LRP4 Antibody, CLSS Antibody, LRP-4 Antibody, SOST2 Antibody, KIAA0816 Antibody, MEGF7 Antibody
Host	LRP4 antibody was produced in Goat
Clonality:	Polyclonal
Immunogen Species:	LRP4 antibody was raised against Human
Antigen Type:	Synthetic peptide
Immunogen:	LRP4 antibody was raised against synthetic peptide C-SNPSYRTSTQEVK from an internal region of human LRP4 (NP_002325.2). Percent identity by BLAST analysis: Human, Gorilla, Gibbon, Monkey, Mouse, Rat, Elephant, Panda, Dog, Bat, Bovine, Horse, Rabbit, Pig, Opossum, Turkey, Chicken, Lizard, Xenopus, Pufferfish (100%).
Specificity:	Human LRP4.
Epitope:	Internal
Reactivity:	Human, Gorilla, Gibbon, Monkey, Mouse, Rat, Bat, Bovine, Dog, Horse, Pig, Rabbit, Chicken, Xenopus
Purification:	Immunoaffinity purified
Presentation:	Tris-buffered saline, pH 7.3, 0.5% BSA, 0.02% sodium azide
Recommended Storage:	Store at -20°C. Minimize freezing and thawing.
Usage Summary:	Peptide ELISA: antibody detection limit dilution 1:32000. Western blot: Approx. 200kDa band observed in Human Brain (Cerebral Cortex) lysates (calculated MW of 212kDa according to NP_002325.2). Recommended concentration: 0.1-0.3 ug/ml.
Uses:	IHC - Paraffin (3.75 µg/ml), Western blot (0.1 - 0.3 µg/ml), ELISA (1:32000) (Optimal dilution to be determined by the researcher)
Size:	50 µg
Concentration:	0.5 mg/ml

Immunohistochemistry Image:



Anti-LRP4 antibody IHC of human colon, epithelium. Immunohistochemistry of formalin-fixed, paraffin-embedded tissue after heat-induced antigen retrieval. Antibody LS-B5902 concentration 3.75 ug/ml.

Western Blot Image:



LRP4 antibody (0.1 ug/ml) staining of human cerebral cortex lysate (35 ug protein/ml in RIPA buffer). Primary incubation was 1 hour. Detected by chemiluminescence.

Requested From:	Japan
Laboratory Reagent For In Vitro Research Use Only	
Not for resale without prior written consent from LifeSpan BioSciences, Inc.	
Created on 9/24/2014	
© 2014 LifeSpan BioSciences	