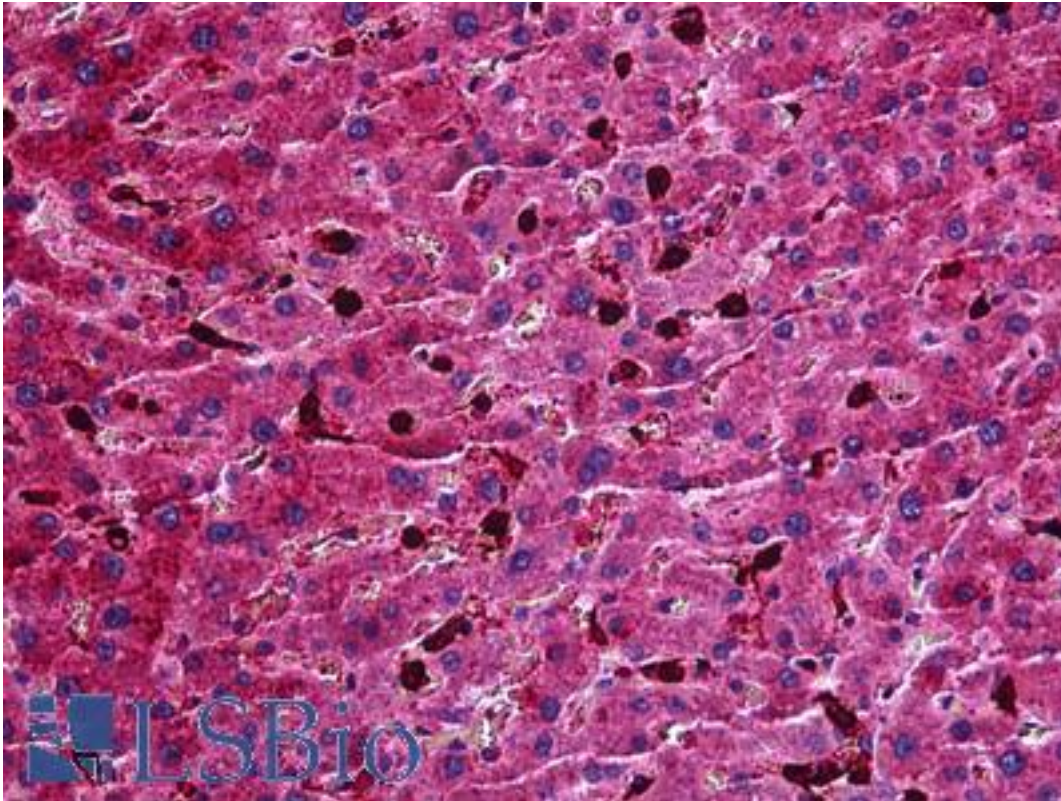


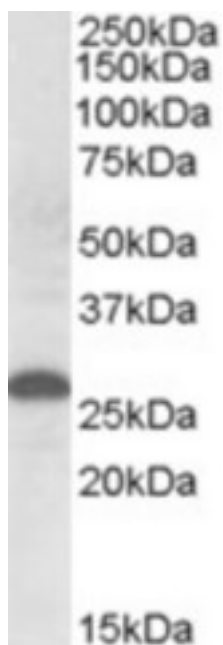
APOM / Apolipoprotein M Goat anti-Mouse Polyclonal (Internal) Antibody - LS-B5901 - LSBio	
CatalogID:	LS-B5901
Validation:	This antibody replaces catalog number LS-C112714. It has been validated for use in the following assays: IHC-P.
Target:	apolipoprotein M (APOM)
Synonyms:	APOM Antibody, Alternative name: G3a, NG20 Antibody, Apo-M Antibody, Apolipoprotein M Antibody, HSPC336 Antibody, G3a Antibody, NG20 Antibody, NG20-like protein Antibody, Protein G3a Antibody
Host	APOM antibody was produced in Goat
Clonality:	Polyclonal
Immunogen Species:	APOM / Apolipoprotein M antibody was raised against Mouse
Antigen Type:	Synthetic peptide
Immunogen:	APOM / Apolipoprotein M antibody was raised against synthetic peptide C-KGNMELRTEGRPD from an internal region of mouse APOM / Apolipoprotein M (NP_061286.1). Percent identity with other species by BLAST analysis: Mouse (100%), Rat (92%).
Specificity:	Mouse APOM / Apolipoprotein M.
Epitope:	Internal
Reactivity:	Mouse, Human
Predicted Reactivity:	Rat
Purification:	Immunoaffinity purified
Presentation:	Tris-buffered saline, pH 7.3, 0.5% BSA, 0.02% sodium azide
Recommended Storage:	Store at -20°C. Minimize freezing and thawing.
Usage Summary:	Peptide ELISA: antibody detection limit dilution 1:16000. Western blot: Approx. 26kDa band observed in Human Placenta lysates (calculated MW of 21.3kDa according to NP_061286.1). The observed molecular weight corresponds to earlier findings in literature with different antibodies (Xu and Dahlbck, J Biol Chem. 1999 Oct 29;274(44):31286-90.; PMID: 10531326). Recommended concentration: 0.3-1 ug/ml.
Uses:	IHC - Paraffin (3.75 µg/ml), Western blot (0.3 - 1 µg/ml), ELISA (1:16000) (Optimal dilution to be determined by the researcher)
Size:	50 µg
Concentration:	0.5 mg/ml

Immunohistochemistry Image:



Anti-APOM / Apolipoprotein M antibody IHC of human liver. Immunohistochemistry of formalin-fixed, paraffin-embedded tissue after heat-induced antigen retrieval. Antibody LS-B5901 concentration 3.75 ug/ml.

Western Blot Image:



APOM antibody (0.5 ug/ml) staining of human placenta lysate (35 ug protein/ml in RIPA buffer). Primary incubation was 1 hour. Detected by chemiluminescence.

Requested From:	Japan
Laboratory Reagent For In Vitro Research Use Only	
Not for resale without prior written consent from LifeSpan BioSciences, Inc.	
Created on 9/24/2014	
© 2014 LifeSpan BioSciences	