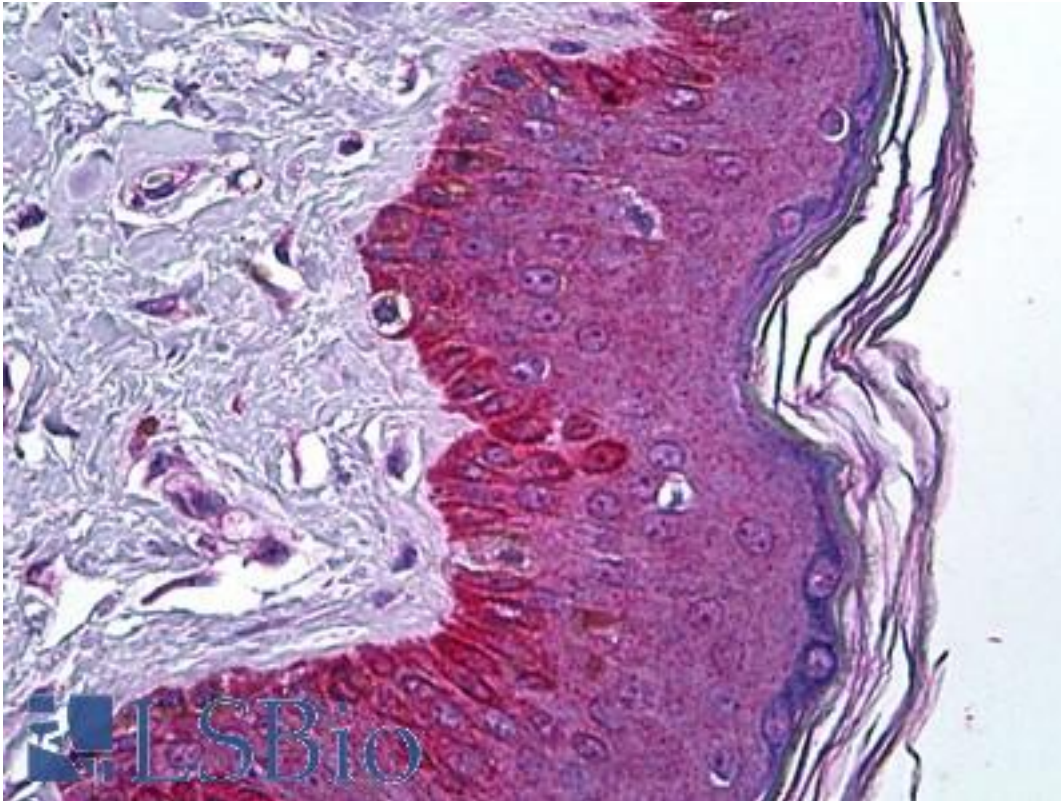


PNPLA3 / Adiponutrin Goat anti-Human Polyclonal (Internal) Antibody - LS-B5900 - LSBio	
CatalogID:	LS-B5900
Validation:	This antibody replaces catalog number LS-C61779. It has been validated for use in the following assays: IHC-P.
Target:	patatin-like phospholipase domain containing 3 (PNPLA3)
Synonyms:	PNPLA3 Antibody, ADPN Antibody, Acylglycerol O-acyltransferase Antibody, C22orf20 Antibody, Adiponutrin Antibody, IPLA2epsilon Antibody, DJ796117.1 Antibody, IPLA(2)epsilon Antibody, IPLA2-epsilon Antibody
Host	PNPLA3 antibody was produced in Goat
Clonality:	Polyclonal
Immunogen Species:	PNPLA3 / Adiponutrin antibody was raised against Human
Antigen Type:	Synthetic peptide
Immunogen:	PNPLA3 / Adiponutrin antibody was raised against synthetic peptide EHDICPKVKSTN from an internal region of human PNPLA3 (NP_473429.2). Percent identity by BLAST analysis: Mouse, Rat, Hamster, Bat, Rabbit (100%); Human, Gorilla, Gibbon, Monkey, Marmoset, Elephant, Panda, Dog (92%); Bovine, Opossum (83%).
Specificity:	Human PNPLA3. This antibody is raised against a peptide derived from the Mouse protein sequence and this peptide differs from Human only in position 2.
Epitope:	Internal
Reactivity:	Human, Mouse, Rat, Bat, Hamster, Rabbit
Predicted Reactivity:	Gorilla, Gibbon, Monkey, Dog
Purification:	Immunoaffinity purified
Presentation:	Tris-buffered saline, pH 7.3, 0.5% BSA, 0.02% sodium azide
Recommended Storage:	Store at -20°C. Minimize freezing and thawing.
Uses:	IHC - Paraffin (3.75 µg/ml), Western blot (0.05 - 0.2 µg/ml), ELISA (1:128000) (Optimal dilution to be determined by the researcher)
Size:	50 µg
Concentration:	0.5 mg/ml

Immunohistochemistry Image:



Anti-PNPLA3 antibody IHC of human skin. Immunohistochemistry of formalin-fixed, paraffin-embedded tissue after heat-induced antigen retrieval. Antibody LS-B5900 concentration 3.75 ug/ml.

Western Blot Image:



Antibody (0.05 ug/ml) staining of mouse heart lysate (35 ug protein in RIPA buffer). Primary incubation was 1hr. Detected by chemiluminescence.

Requested From:

Japan

Laboratory Reagent For In Vitro Research Use Only

Not for resale without prior written consent from LifeSpan BioSciences, Inc.

Created on 9/24/2014

© 2014 LifeSpan BioSciences