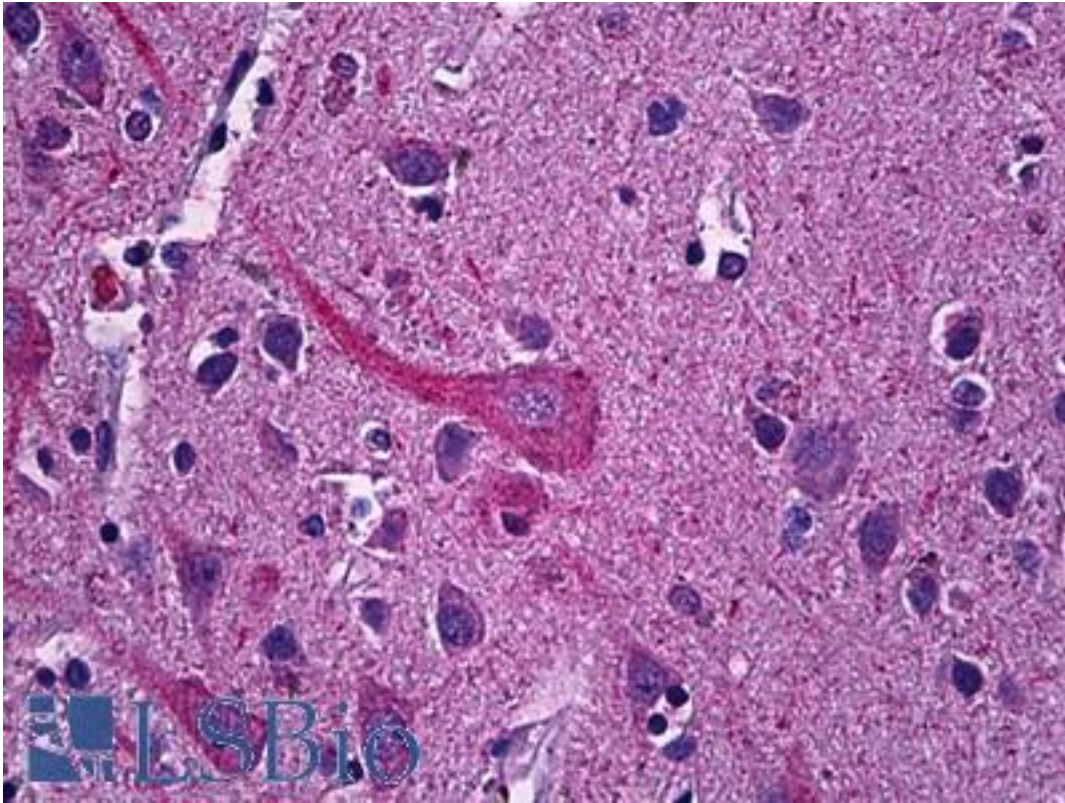


SYT1 / Synaptotagmin Goat anti-Human Polyclonal (Internal) Antibody - LS-B5899 - LSBio	
CatalogID:	LS-B5899
Validation:	This antibody replaces catalog number LS-C112808. It has been validated for use in the following assays: IHC-P.
Target:	synaptotagmin I (SYT1)
Synonyms:	SYT1 Antibody, SYT Antibody, SVP65 Antibody, Synaptotagmin Antibody, Synaptotagmin 1 Antibody, Syt1 Antibody, Synaptotagmin I Antibody, Synaptotagmin-1 Antibody
Family / Subfamily:	Synaptotagmin / Not assigned-Other
Host	SYT1 antibody was produced in Goat
Clonality:	Polyclonal
Immunogen Species:	SYT1 / Synaptotagmin antibody was raised against Human
Antigen Type:	Synthetic peptide
Immunogen:	SYT1 / Synaptotagmin antibody was raised against synthetic peptide C-RDLQSAEKEEQEK from an internal region of human SYT1 / Synaptotagmin (NP_005630.1). Percent identity by BLAST analysis: Human, Gorilla, Orangutan, Gibbon, Monkey, Marmoset, Mouse, Rat, Hamster, Elephant, Panda, Dog, Bat, Bovine, Horse, Rabbit, Pig, Opossum, Turkey, Chicken, Platypus, Lizard, Pufferfish, Zebrafish (100%); Xenopus, Stickleback (92%); Seabass, Magnaporthe (85%).
Specificity:	Human SYT1 / Synaptotagmin. Reported isoforms NP_005630.1, NP_001129277.1 and NP_001129278.1 represent identical protein.
Epitope:	Internal
Reactivity:	Human, Gorilla, Orangutan, Gibbon, Monkey, Mouse, Rat, Bat, Bovine, Dog, Hamster, Horse, Pig, Rabbit, Chicken, Zebrafish
Predicted Reactivity:	Xenopus
Purification:	Immunoaffinity purified
Presentation:	Tris-buffered saline, pH 7.3, 0.5% BSA, 0.02% sodium azide
Recommended Storage:	Store at -20°C. Minimize freezing and thawing.
Usage Summary:	Peptide ELISA: antibody detection limit dilution 1:2000. Western blot: Approx. 65kDa band observed in Human Brain (hippocampus) and Mouse and Rat Brain lysates (calculated MW of 47.6kDa according to NP_005630.1). The observed molecular weight corresponds to earlier findings in literature with different antibodies (Matthew et al, J Cell Biol. 1981 Oct;91(1):257-69.; PMID: 7298720). Recommended concentration: 0.3-1 ug/ml.
Uses:	IHC - Paraffin (3.75 µg/ml), Western blot (0.3 - 1 µg/ml), ELISA (1:2000) (Optimal dilution to be determined by the researcher)
Size:	50 µg
Concentration:	0.5 mg/ml

Immunohistochemistry Image:



Anti-SYT1 / Synaptotagmin antibody IHC of human brain, cortex. Immunohistochemistry of formalin-fixed, paraffin-embedded tissue after heat-induced antigen retrieval. Antibody LS-B5899 concentration 3.75 ug/ml.

Western Blot Image:



SYT1 antibody (1 ug/ml) staining of human hippocampus lysate (35 ug protein/ml in RIPA buffer). Primary incubation was 1 hour. Detected by chemiluminescence.

Requested From:	Japan
Laboratory Reagent For In Vitro Research Use Only	
Not for resale without prior written consent from LifeSpan BioSciences, Inc.	
Created on 9/24/2014	
© 2014 LifeSpan BioSciences	