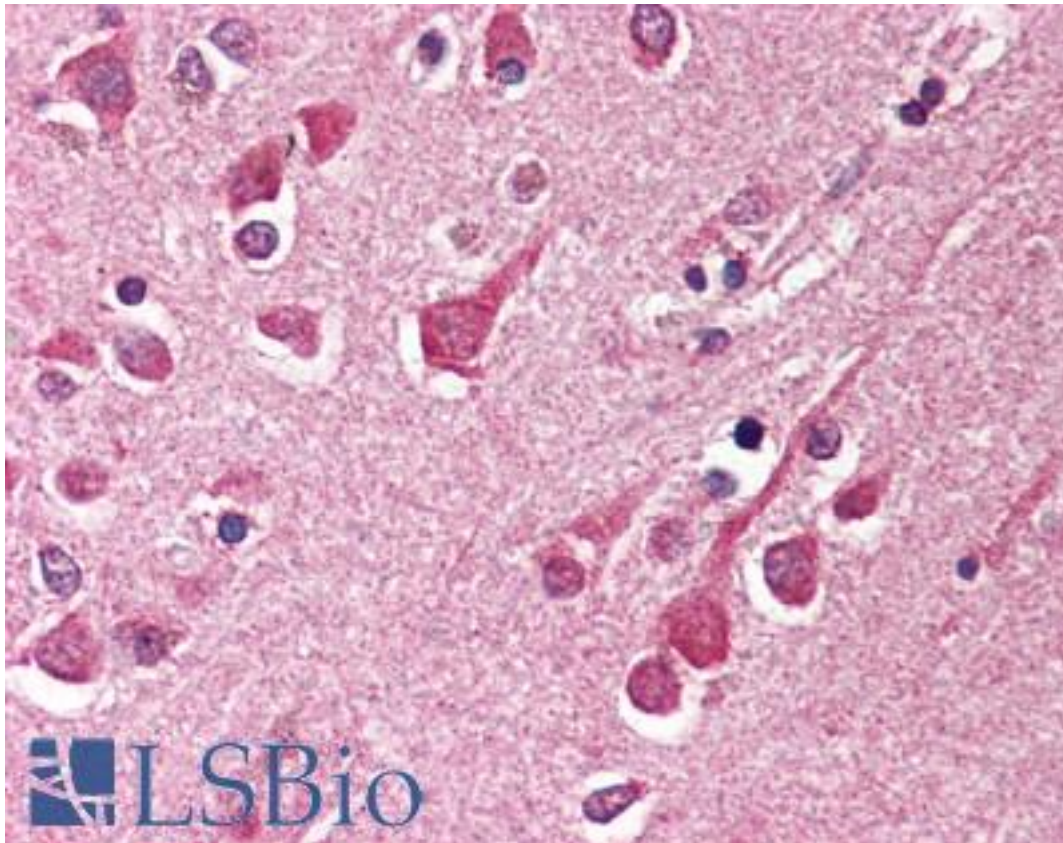


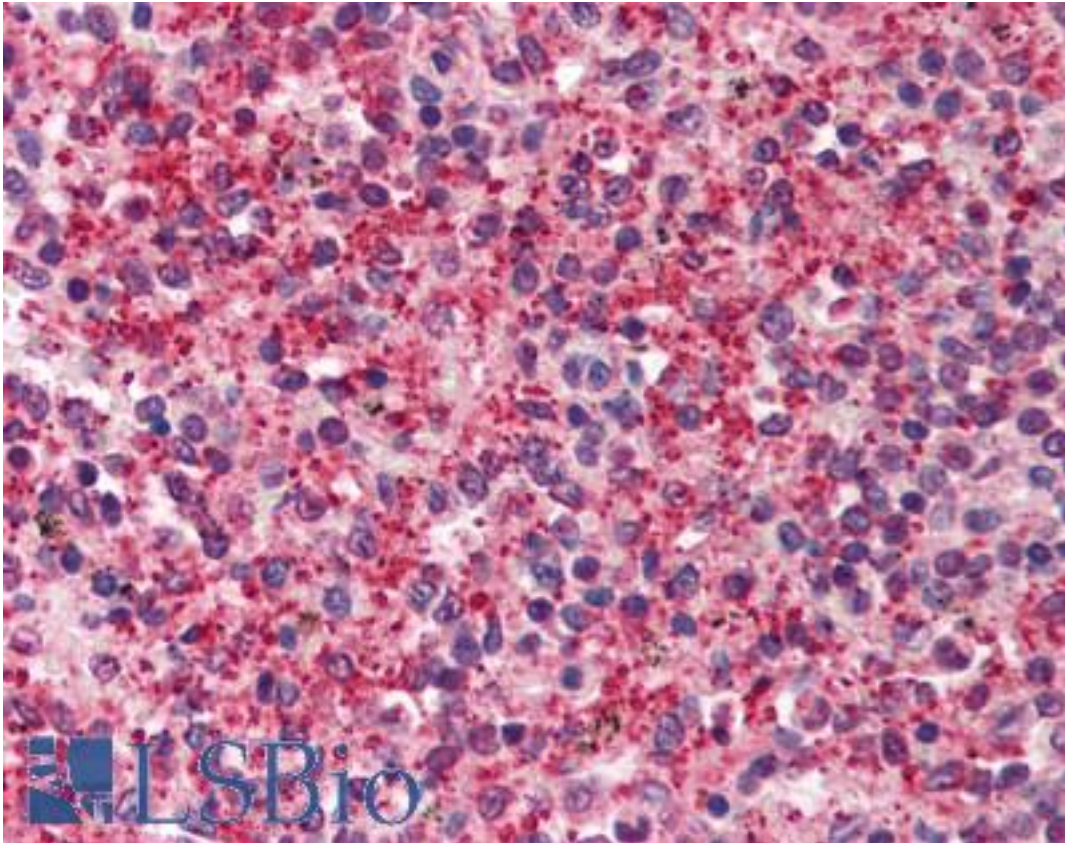
Raptor / Mip1 Rabbit anti-Human Polyclonal Antibody - LS-B579 - LSBio	
CatalogID:	LS-B579
Validation:	This antibody replaces catalog number LS-C19502. It has been validated for use in the following assays: IHC.
Target:	regulatory associated protein of MTOR, complex 1 (RPTOR)
Synonyms:	RPTOR Antibody, KOG1 Antibody, KIAA1303 Antibody, RAPTOR Antibody, Mip1 Antibody
Host	RPTOR antibody was produced in Rabbit
Clonality:	Polyclonal
Immunogen Species:	Raptor / Mip1 antibody was raised against Human
Antigen Type:	Synthetic peptide
Immunogen:	Raptor / Mip1 antibody was raised against synthetic peptide from human RPTOR / Raptor.
Specificity:	15 amino acid peptide from the central region of human Raptor
Reactivity:	Human, Mouse
Purification:	Immunoaffinity purified
Presentation:	PBS, 0.02% sodium azide.
Recommended Storage:	Short term 4°C, long term aliquot and store at -20°C, avoid freeze thaw cycles. Store undiluted.
Usage Summary:	Immunohistochemistry: LS-B579 was validated for use in immunohistochemistry on a panel of 21 formalin-fixed, paraffin-embedded (FFPE) human tissues after heat induced antigen retrieval in pH 6.0 citrate buffer. After incubation with the primary antibody, slides were incubated with biotinylated secondary antibody, followed by alkaline phosphatase-streptavidin and chromogen. The stained slides were evaluated by a pathologist to confirm staining specificity. The optimal working concentration for LS-B579 was determined to be 2.5 ug/ml.
Uses:	IHC - Paraffin (2.5 µg/ml), ICC, Western blot (2 µg/ml) (Optimal dilution to be determined by the researcher)
Size:	50 µg
Concentration:	1 mg/ml

Immunohistochemistry Image:



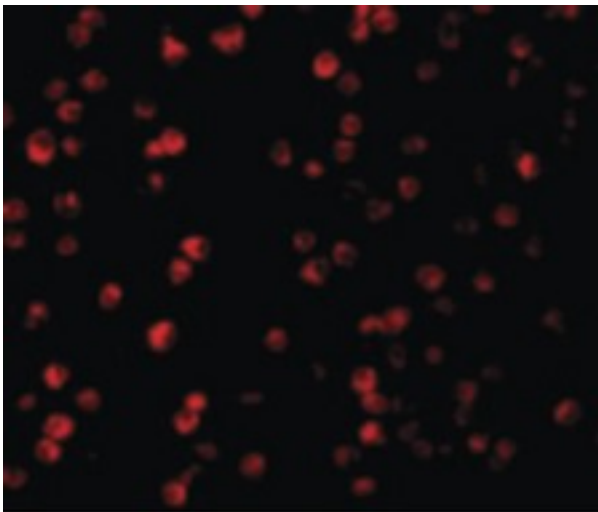
Anti-RPTOR / Raptor antibody IHC of human brain, cortex. Immunohistochemistry of formalin-fixed, paraffin-embedded tissue after heat-induced antigen retrieval. Antibody LS-B579 concentration 5 ug/ml.

Immunohistochemistry Image:



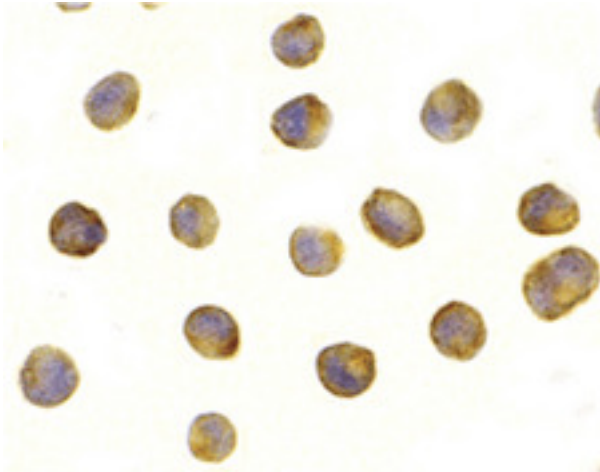
Anti-RPTOR / Raptor antibody IHC of human spleen. Immunohistochemistry of formalin-fixed, paraffin-embedded tissue after heat-induced antigen retrieval. Antibody LS-B579 concentration 5 ug/ml.

Immunofluorescence Image:



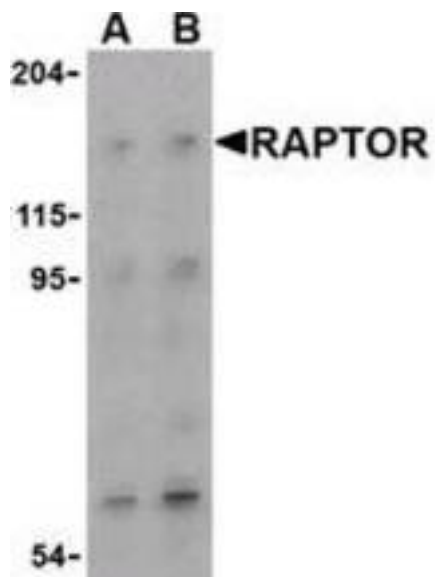
Immunofluorescence of Raptor in L1210 cells with Raptor antibody at 10 ug/ml.

Immunocytochemistry Image:



Immunocytochemistry staining of L1210 cells using RAPTOR antibody at 1ug/ml

Western Blot Image:



Western blot of Raptor in L1210 cell lysate with LS-B579 at (A) 2 and (B) 4 ug/ml.

Requested From:

Japan

Laboratory Reagent For In Vitro Research Use Only

Not for resale without prior written consent from LifeSpan BioSciences, Inc.

Created on 9/24/2014

© 2014 LifeSpan BioSciences