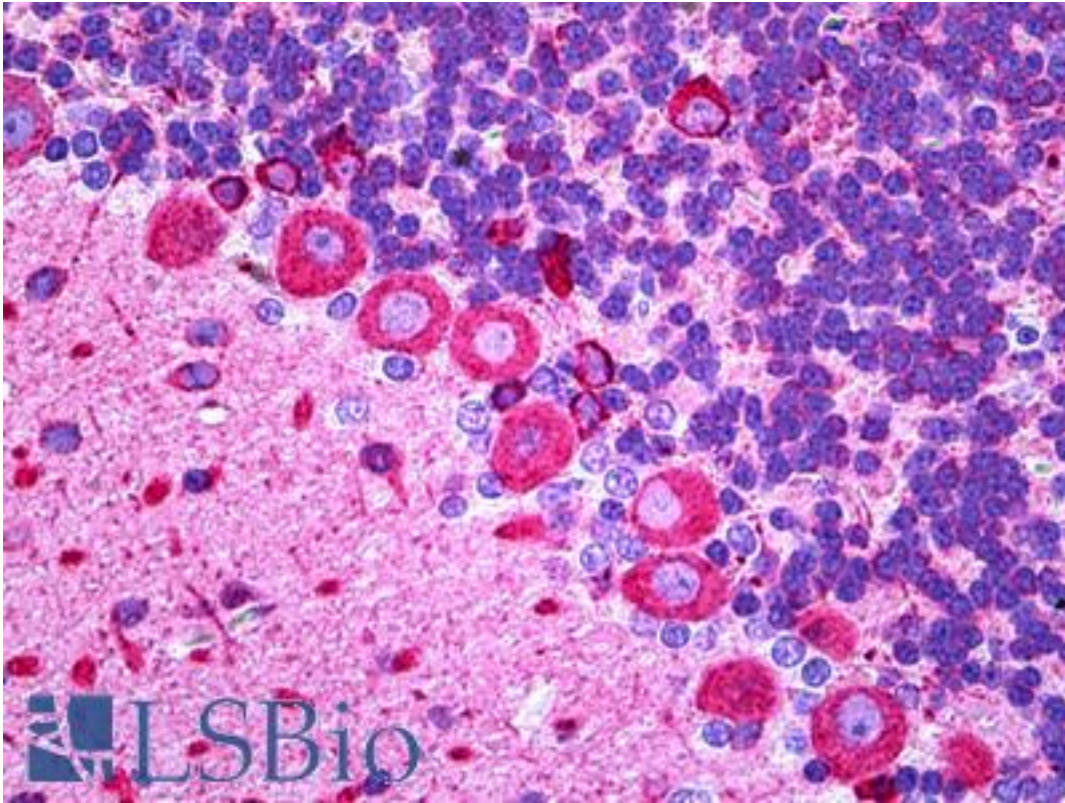


**TUBB3 / Tubulin Beta 3 Mouse anti-Rat Monoclonal Antibody - LS-B5772 - LSBio**

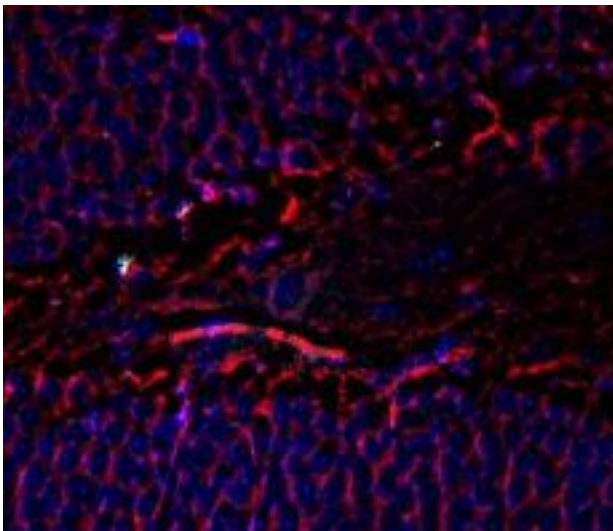
<b>CatalogID:</b>	LS-B5772
<b>Validation:</b>	This antibody replaces catalog number LS-C61838. It has been validated for use in the following assays: IHC-P.
<b>Target:</b>	tubulin, beta 3 class III (TUBB3)
<b>Synonyms:</b>	TUBB3 Antibody, CDCBM Antibody, Beta III Tubulin Antibody, Class III beta-tubulin Antibody, TUBB4 Antibody, Tubulin, beta 3 Antibody, Tubulin beta-III Antibody, Tubulin beta-3 chain Antibody, Tubulin beta-4 chain Antibody, Tubulin, beta 3 class III Antibody, CFEOM3A Antibody
<b>Family / Subfamily:</b>	Tubulin
<b>Host</b>	TUBB3 antibody was produced in Mouse
<b>Clonality:</b>	Monoclonal
<b>Isotype:</b>	IgG
<b>Immunogen Species:</b>	TUBB3 / Tubulin Beta 3 antibody was raised against Rat
<b>Antigen Type:</b>	Synthetic peptide
<b>Immunogen:</b>	TUBB3 / Tubulin Beta 3 antibody was raised against synthetic peptide corresponding to beta III tubulin.
<b>Specificity:</b>	Specific for the ~55kD beta III tubulin protein. This clone is similar to the monoclonal antibody Tuj1.
<b>Reactivity:</b>	Rat
<b>Purification:</b>	Protein G purified
<b>Presentation:</b>	10mM HEPES, pH 7.5, 150 mM sodium chloride, 100ug/ml BSA, 50% glycerol
<b>Recommended Storage:</b>	May be stored at 4°C for short-term only. For long-term storage and to avoid repeated freezing and thawing, aliquot and store at -20°C. Aliquots are stable for at least 12 months at -20°C
<b>Uses:</b>	IHC - Paraffin (1:100), Western blot (1:10000) (Optimal dilution to be determined by the researcher)
<b>Size:</b>	50 µl

**Immunohistochemistry Image:**



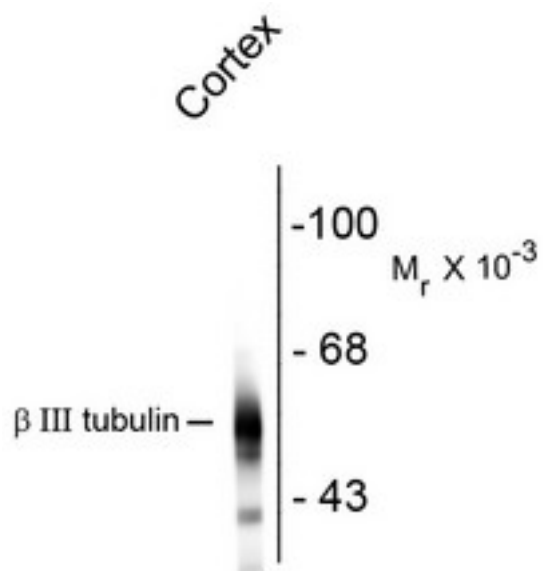
Anti-TUBB3 / Beta III Tubulin antibody IHC of rat brain, Purkinje cells. Immunohistochemistry of formalin-fixed, paraffin-embedded tissue after heat-induced antigen retrieval. Antibody LS-B5772 dilution 1:100.

**Immunohistochemistry Image:**



Immunostaining of mouse dentate gyrus showing beta III tubulin in red and nuclei in blue. Photo courtesy of Robert Wine

**Western Blot Image:**



Western blot of rat cortex lysate showing specific immunolabeling of the ~55k beta III tubulin protein.

**Requested From:**

Japan

Laboratory Reagent For In Vitro Research Use Only

Not for resale without prior written consent from LifeSpan BioSciences, Inc.

Created on 9/24/2014

© 2014 LifeSpan BioSciences