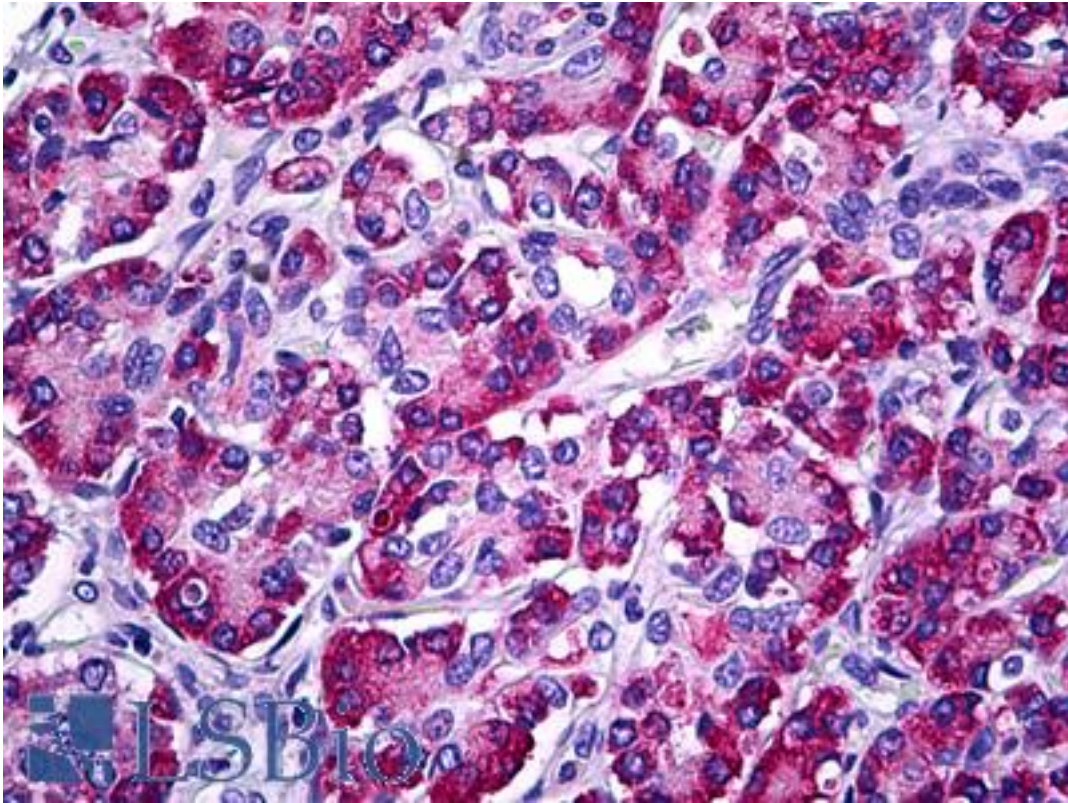


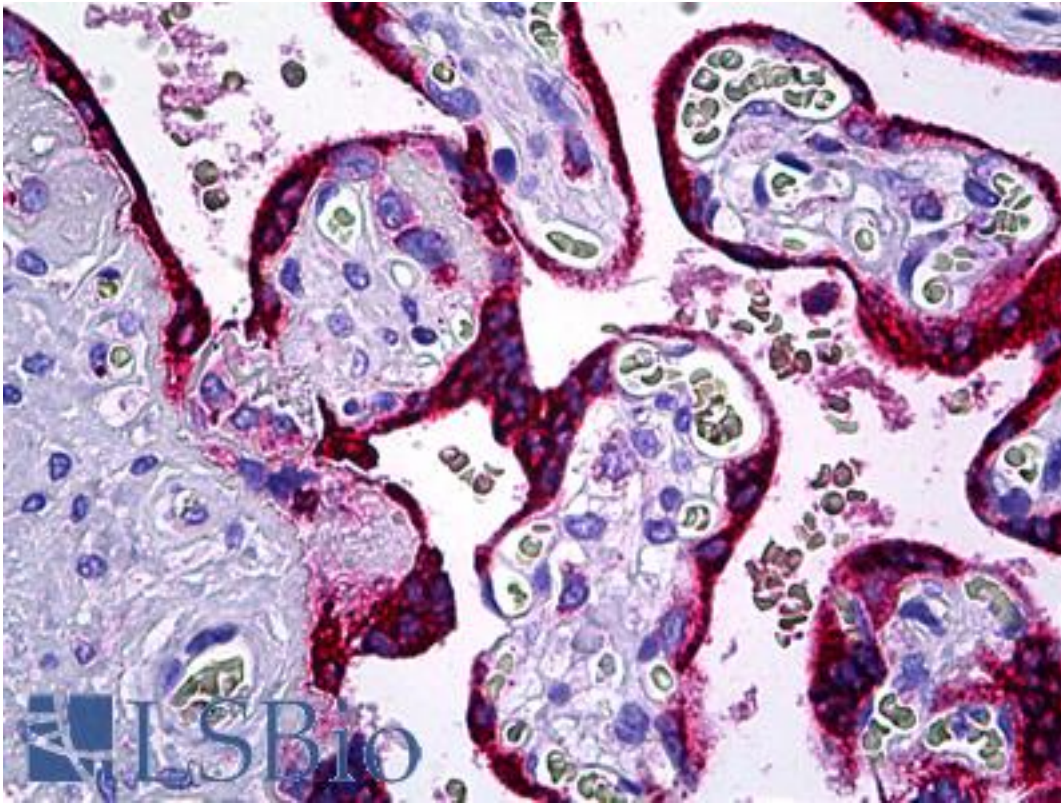
MESDC2 / MESD Rabbit anti-Human Monoclonal Antibody - LS-B5769 - LSBio	
CatalogID:	LS-B5769
Validation:	This antibody replaces catalog number LS-C72440. It has been validated for use in the following assays: IHC-P.
Target:	mesoderm development candidate 2 (MESDC2)
Synonyms:	MESDC2 Antibody, BOCA Antibody, Mesoderm development protein Antibody, MESD Antibody, KIAA0081 Antibody, LDLR chaperone MESD Antibody
Host	MESDC2 antibody was produced in Rabbit
Clonality:	Monoclonal
Isotype:	IgG
Immunogen Species:	MESDC2 / MESD antibody was raised against Human
Antigen Type:	Recombinant protein
Immunogen:	MESDC2 / MESD antibody was raised against immunizing rabbits with a recombinant human MESDC2 protein.
Specificity:	MESDC2 (C22F5) Rabbit mAb detects endogenous levels of total MESDC2 protein.
Reactivity:	Human, Monkey, Mouse, Rat
Purification:	Tissue culture supernatant
Presentation:	10 mM sodium HEPES, pH 7.5, 150 mM sodium chloride, 100 ug/ml BSA, 50% glycerol, 0.02% sodium azide.
Recommended Storage:	May be stored at 4°C for short-term only. Aliquot to avoid repeated freezing and thawing. Store at -20°C. Aliquots are stable for at least 12 months
Usage Summary:	Suitable for use in Western Blot and Immunoprecipitation. Western Blot: 1:1000. Immunoprecipitation:1:50.
Uses:	IHC - Paraffin (1:100), Western blot (1:1000), Immunoprecipitation (1:50) (Optimal dilution to be determined by the researcher)
Size:	50 µl

Immunohistochemistry Image:



Anti-MESDC2 antibody IHC of human pancreas. Immunohistochemistry of formalin-fixed, paraffin-embedded tissue after heat-induced antigen retrieval. Antibody LS-B5769 dilution 1:100.

Immunohistochemistry Image:



Anti-MESDC2 antibody IHC of human placenta. Immunohistochemistry of formalin-fixed, paraffin-embedded tissue after heat-induced antigen retrieval. Antibody LS-B5769 dilution 1:100.

Requested From:

Japan

Laboratory Reagent For In Vitro Research Use Only

Not for resale without prior written consent from LifeSpan BioSciences, Inc.

Created on 9/24/2014

© 2014 LifeSpan BioSciences