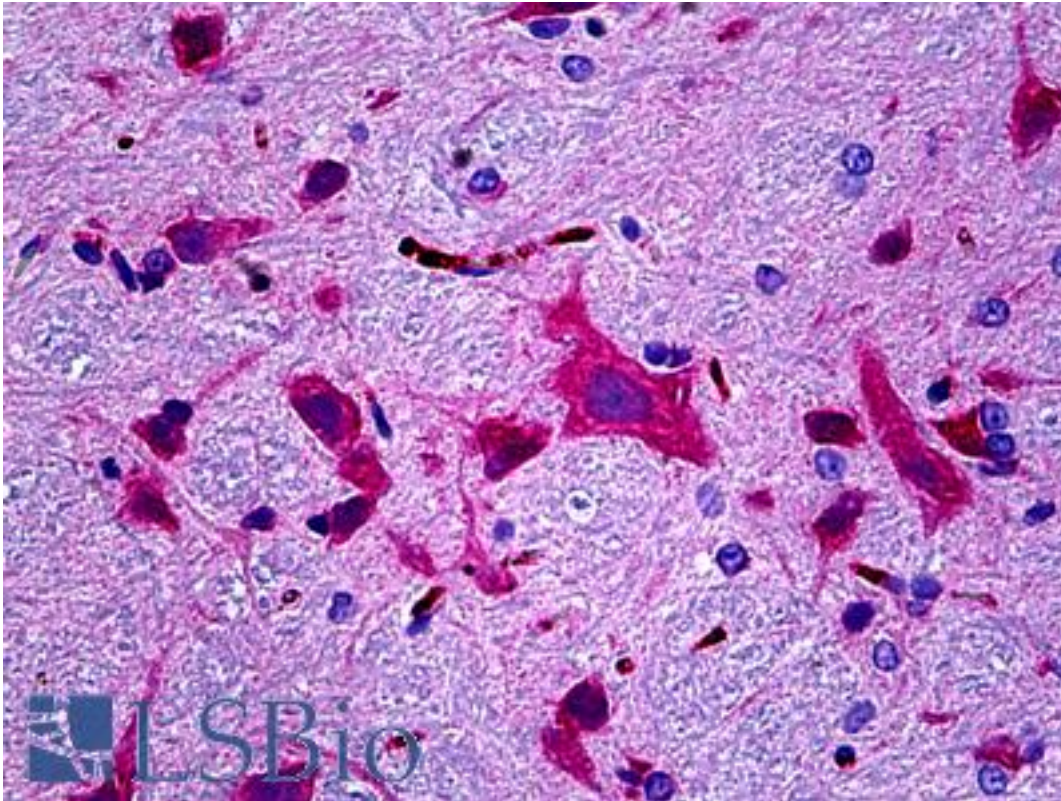


CAMK2B / CaMKII Beta Mouse anti-Rat Monoclonal Antibody - LS-B5767 - LSBio

| | |
|-----------------------------|--|
| CatalogID: | LS-B5767 |
| Validation: | This antibody replaces catalog number LS-C21191. It has been validated for use in the following assays: IHC-P. |
| Target: | calcium/calmodulin-dependent protein kinase II beta (CAMK2B) |
| Synonyms: | CAMK2B Antibody, Beta-subunit of CaMK II Antibody, Cam kinase II beta Antibody, CaMK IIbeta Antibody, CaM-kinase II beta chain Antibody, CAMKB Antibody, Beta CaMK II Antibody, CaM kinase II beta subunit Antibody, CaM kinase II subunit beta Antibody, CaM kinase IIbeta Antibody, CAM2 Antibody, Camk ii beta Antibody, CAMK2 Antibody, CaMKII beta Antibody, CaMK-II subunit beta Antibody, CaMKIIbeta Antibody |
| Family / Subfamily: | Protein Kinase / CAMK2 |
| Host | CAMK2B antibody was produced in Mouse |
| Clonality: | Monoclonal |
| Isotype: | IgG2b,k |
| Immunogen Species: | CAMK2B / CaMKII Beta antibody was raised against Rat |
| Immunogen: | CAMK2B / CaMKII Beta antibody was raised against purified rat brain CaM Kinase. |
| Specificity: | Specific for b subunit of CaM Kinase II. Reactivity with other subunit isoforms is minimal to zero unless the proteins are expressed at very high concentrations. Positive reactivity has been seen on Western blots with human, mouse, rat, goldfish and sea urchin egg samples. |
| Reactivity: | Rat, Human, Mouse |
| Purification: | Protein A purified |
| Presentation: | PBS buffer, pH 7.4, 0.1% Sodium Azide |
| Recommended Storage: | May be stored at 4°C for short-term only. Aliquot to avoid repeated freezing and thawing. Store at -20°C. Aliquots are stable for at least 12months. |
| Usage Summary: | Suitable for use in ELISA, Western Blot, Immunoprecipitation and Immunohistochemistry. ELISA: 0.1-1 ug/ml. Immunohistochemistry (paraffin): 1-5 ug/ml. Immunoprecipitation/IP kinase assays: 2 ug. Western Blot: 1 ug/ml. |
| Uses: | IHC - Paraffin (10 µg/ml), Western blot (1 µg/ml), Immunoprecipitation, ELISA (0.1 - 1 µg/ml), Functional Assay (Optimal dilution to be determined by the researcher) |
| Size: | 50 µg |
| Concentration: | 0.5 mg/ml |

Immunohistochemistry Image:



Anti-CAMK2B antibody IHC of rat brain. Immunohistochemistry of formalin-fixed, paraffin-embedded tissue after heat-induced antigen retrieval. Antibody LS-B5767 concentration 10 ug/ml.

Requested From:

Japan

Laboratory Reagent For In Vitro Research Use Only

Not for resale without prior written consent from LifeSpan BioSciences, Inc.

Created on 9/24/2014

© 2014 LifeSpan BioSciences