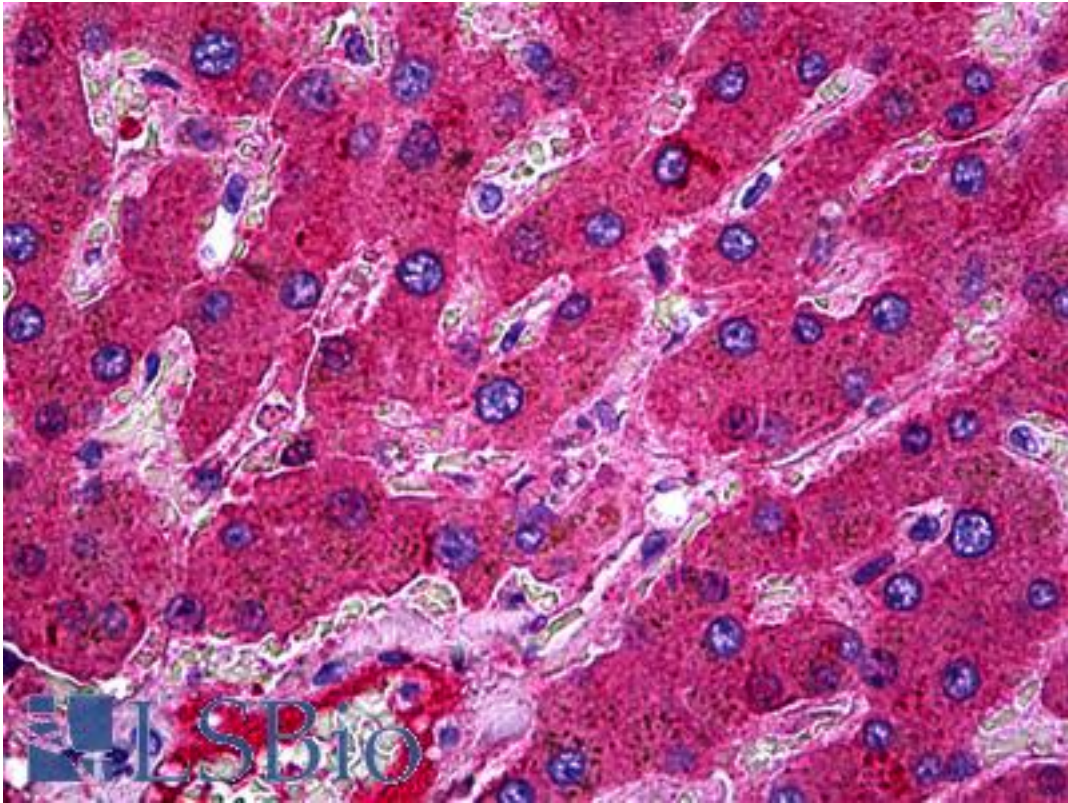


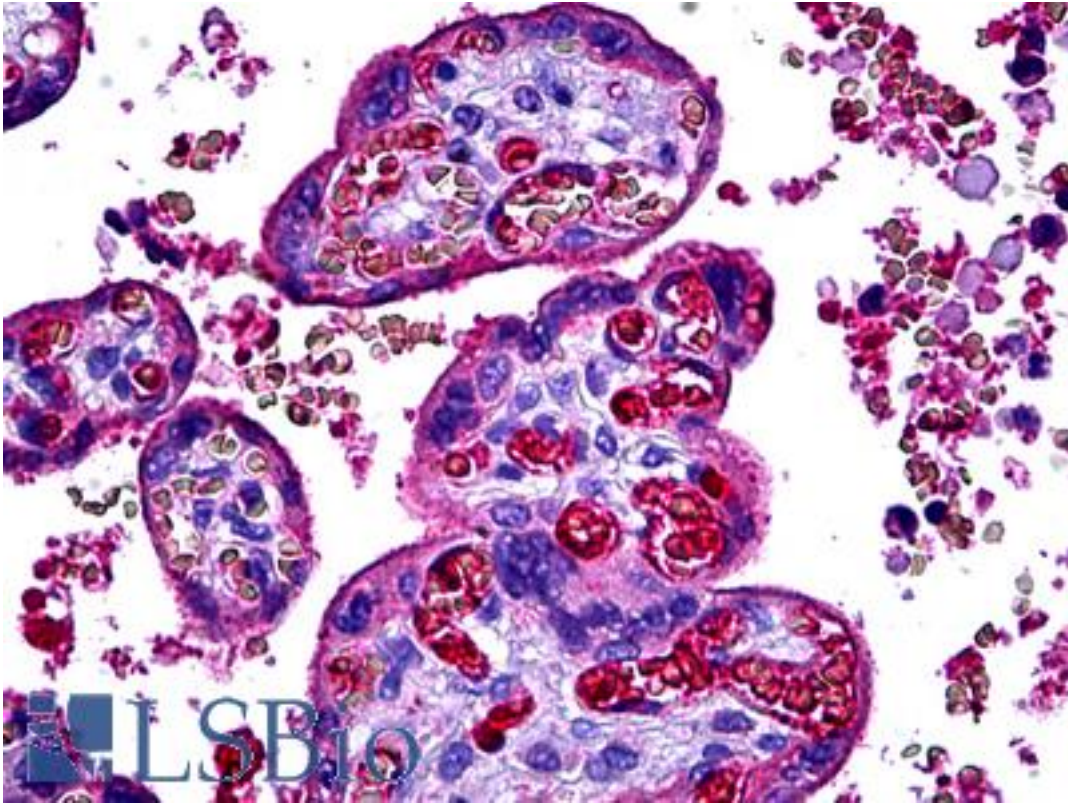
Complement C3c Sheep anti-Human Polyclonal Antibody - LS-B5757 - LSBio	
<b>CatalogID:</b>	LS-B5757
<b>Validation:</b>	This antibody replaces catalog number LS-C27174. It has been validated for use in the following assays: IHC-P.
<b>Target:</b>	Complement C3 / C3c
<b>Host</b>	Complement C3 / C3c antibody was produced in Sheep
<b>Clonality:</b>	Polyclonal
<b>Isotype:</b>	IgG
<b>Immunogen Species:</b>	Complement C3c antibody was raised against Human
<b>Immunogen:</b>	Complement C3c antibody was raised against native human C3 / Complement C3.
<b>Specificity:</b>	This antibody detects human Complement 3c, a polypeptide fragment which is present in C3.
<b>Reactivity:</b>	Human
<b>Purification:</b>	Protein G purified
<b>Presentation:</b>	PBS, 0.09% sodium azide
<b>Recommended Storage:</b>	Short term 4°C, long term aliquot and store at -20°C, avoid freeze thaw cycles.
<b>Uses:</b>	IHC - Paraffin (5 µg/ml), IHC - Frozen (1:50), ELISA (1:400) (Optimal dilution to be determined by the researcher)
<b>Size:</b>	50 µl

**Immunohistochemistry Image:**



Anti-Complement C3 antibody IHC of human liver. Immunohistochemistry of formalin-fixed, paraffin-embedded tissue after heat-induced antigen retrieval. Antibody LS-B5757 concentration 5 ug/ml.

**Immunohistochemistry Image:**



Anti-Complement C3 antibody IHC of human placenta. Immunohistochemistry of formalin-fixed, paraffin-embedded tissue after heat-induced antigen retrieval. Antibody LS-B5757 concentration 5 ug/ml.

**Requested From:**

Japan

Laboratory Reagent For In Vitro Research Use Only

Not for resale without prior written consent from LifeSpan BioSciences, Inc.

Created on 9/24/2014

© 2014 LifeSpan BioSciences