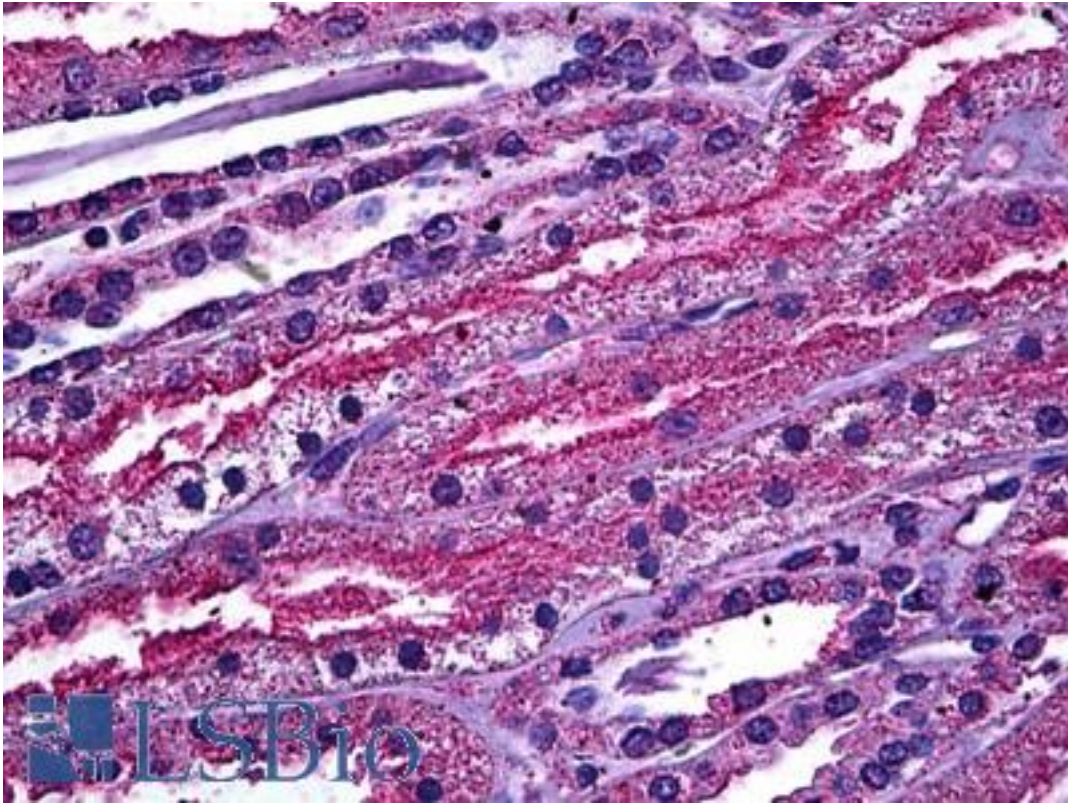


ABCC4 / MRP4 Mouse anti-Human Monoclonal (1B2) Antibody - LS-B5750 - LSBio

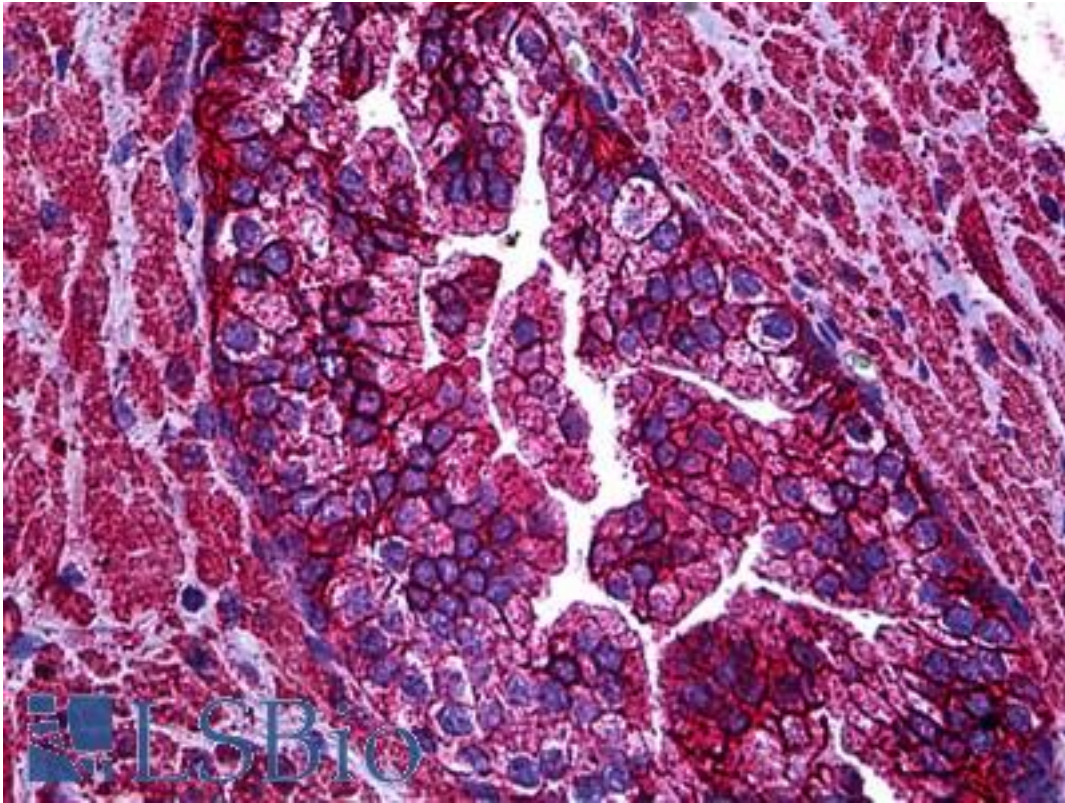
<b>CatalogID:</b>	LS-B5750
<b>Validation:</b>	This antibody replaces catalog number LS-C133633. It has been validated for use in the following assays: IHC-P.
<b>Target:</b>	ATP-binding cassette, sub-family C (CFTR/MRP), member 4 (ABCC4)
<b>Synonyms:</b>	ABCC4 Antibody, EST170205 Antibody, MOAT-B Antibody, Multidrug resistance protein 4 Antibody, MOATB Antibody, MRP4 Antibody
<b>Family / Subfamily:</b>	Transporter / ATP-binding cassette - ABCC/MRP
<b>Host</b>	ABCC4 antibody was produced in Mouse
<b>Clonality:</b>	Monoclonal
<b>Isotype:</b>	IgG1,k
<b>Clone Name:</b>	1B2
<b>Immunogen Species:</b>	ABCC4 / MRP4 antibody was raised against Human
<b>Immunogen:</b>	ABCC4 / MRP4 antibody was raised against aBCC4 (AAH41560, 1 a.a. ~ 110 a.a) partial recombinant protein with GST tag. MW of the GST tag alone is 26 KDa.
<b>Specificity:</b>	Human ABCC4
<b>Reactivity:</b>	Human
<b>Purification:</b>	Protein A purified
<b>Presentation:</b>	PBS, pH 7.2
<b>Recommended Storage:</b>	Short term 4°C, long term aliquot and store at -20°C, avoid freeze thaw cycles.
<b>Usage Summary:</b>	Immunohistochemistry: Formalin-fixed paraffin-embedded sections. Sandwich ELISA: Recombinant protein. Western Blot: Cell lysate, Recombinant protein.
<b>Uses:</b>	IHC - Paraffin (10 µg/ml), Western blot, ELISA (Optimal dilution to be determined by the researcher)
<b>Size:</b>	50 µg
<b>Concentration:</b>	0.5 mg/ml

**Immunohistochemistry Image:**



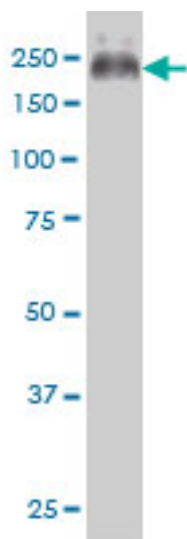
Anti-ABCC4 / MRP4 antibody IHC of human kidney. Immunohistochemistry of formalin-fixed, paraffin-embedded tissue after heat-induced antigen retrieval. Antibody LS-B5750 concentration 10 ug/ml.

**Immunohistochemistry Image:**



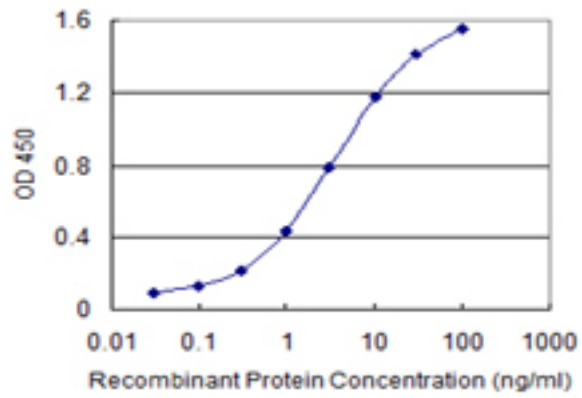
Anti-ABCC4 / MRP4 antibody IHC of human prostate. Immunohistochemistry of formalin-fixed, paraffin-embedded tissue after heat-induced antigen retrieval. Antibody LS-B5750 concentration 10 ug/ml.

**Western Blot Image:**



ABCC4 monoclonal antibody, clone 1B2 Western blot of ABCC4 expression in HeLa nuclear extract.

**ELISA Image:**



Detection limit for recombinant GST tagged ABCC4 is 0.03 ng/ml as a capture antibody.

**Requested From:**

Japan

Laboratory Reagent For In Vitro Research Use Only

Not for resale without prior written consent from LifeSpan BioSciences, Inc.

Created on 9/24/2014

© 2014 LifeSpan BioSciences