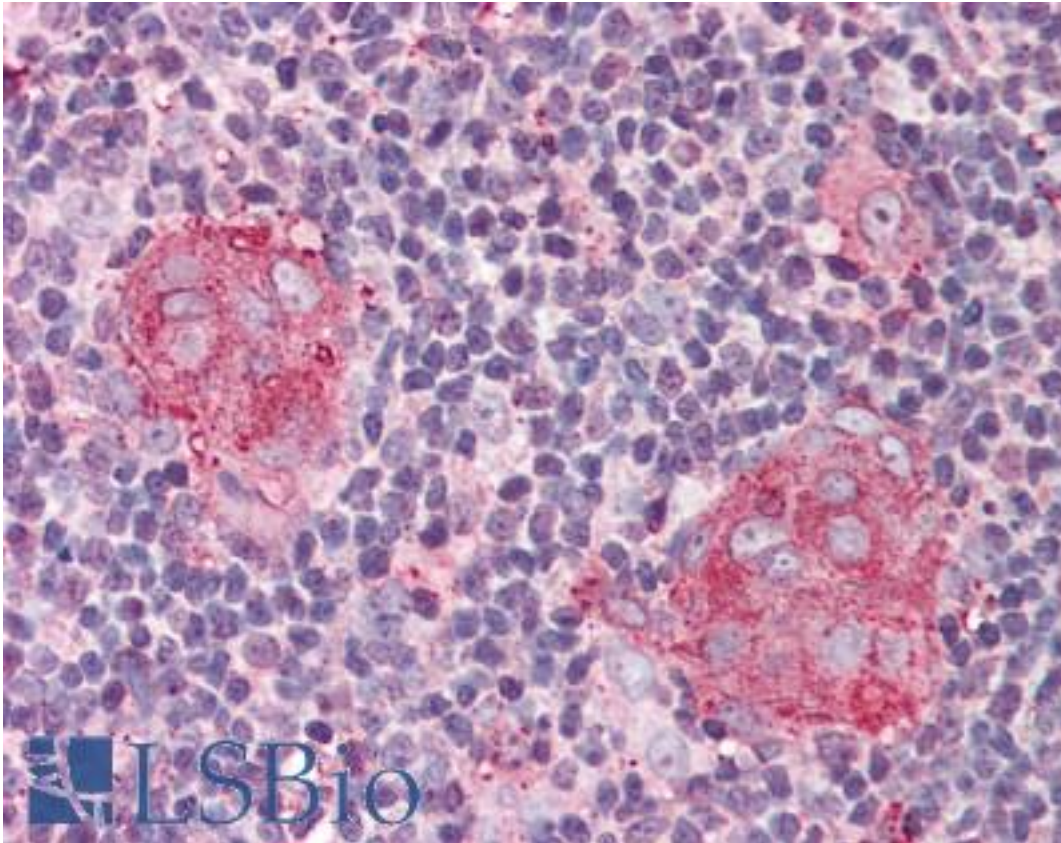


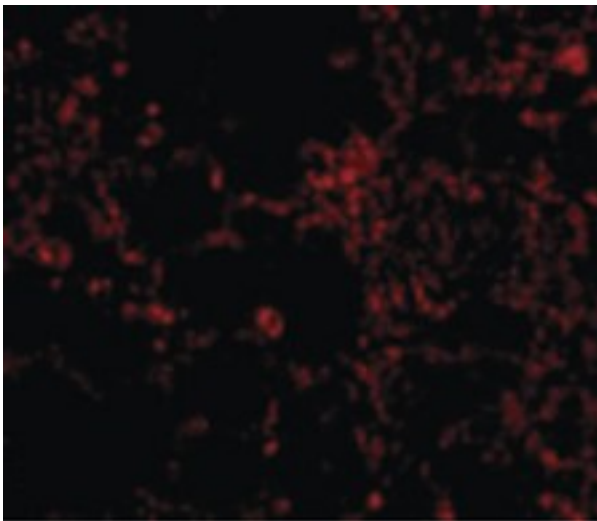
IL21 Receptor / IL21R Rabbit anti-Human Polyclonal (aa97-111) Antibody - LS-B572 - LSBio	
<b>CatalogID:</b>	LS-B572
<b>Validation:</b>	This antibody replaces catalog number LS-C402. It has been validated for use in the following assays: IHC.
<b>Target:</b>	Interleukin 21 Receptor (IL21R)
<b>Synonyms:</b>	IL21R Antibody, CD360 Antibody, Interleukin 21 receptor Antibody, Interleukin-21 receptor Antibody, NLR Antibody, IL-21 receptor Antibody, CD360 antigen Antibody, IL-21R Antibody, IL21 Receptor Antibody, Novel interleukin receptor Antibody
<b>Family / Subfamily:</b>	Interleukin
<b>Host</b>	IL21R antibody was produced in Rabbit
<b>Clonality:</b>	Polyclonal
<b>Immunogen Species:</b>	IL21 Receptor / IL21R antibody was raised against Human
<b>Antigen Type:</b>	Synthetic peptide
<b>Immunogen:</b>	IL21 Receptor / IL21R antibody was raised against synthetic peptide from human IL21R / IL-21R.
<b>Specificity:</b>	synthetic peptide (nitdqsgnysqecgs) corresponding to amino acids 97 to 111 of human IL-21R precursor
<b>Epitope:</b>	aa97-111
<b>Reactivity:</b>	Human, Mouse, Rat
<b>Purification:</b>	Immunoaffinity purified
<b>Presentation:</b>	PBS, 0.02% sodium azide.
<b>Recommended Storage:</b>	Short term 4°C, long term aliquot and store at -20°C, avoid freeze thaw cycles. Store undiluted.
<b>Usage Summary:</b>	Immunohistochemistry: LS-B572 was validated for use in immunohistochemistry on a panel of 21 formalin-fixed, paraffin-embedded (FFPE) human tissues after heat induced antigen retrieval in pH 6.0 citrate buffer. After incubation with the primary antibody, slides were incubated with biotinylated secondary antibody, followed by alkaline phosphatase-streptavidin and chromogen. The stained slides were evaluated by a pathologist to confirm staining specificity. The optimal working concentration for LS-B572 was determined to be 2.5 ug/ml.
<b>Uses:</b>	IHC - Paraffin (2.5 µg/ml), Western blot (0.5 - 1 µg/ml) (Optimal dilution to be determined by the researcher)
<b>Size:</b>	50 µg
<b>Concentration:</b>	1 mg/ml

**Immunohistochemistry Image:**



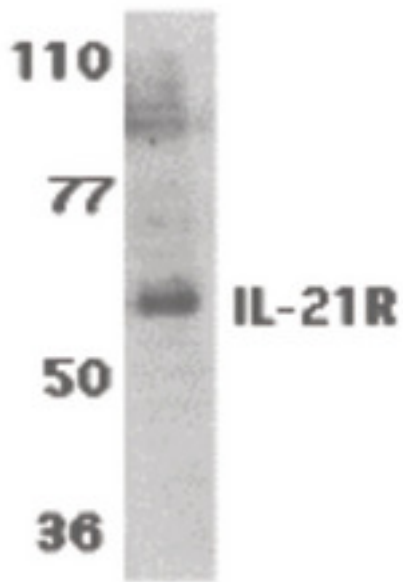
Anti-IL21 Receptor antibody IHC of human thymus. Immunohistochemistry of formalin-fixed, paraffin-embedded tissue after heat-induced antigen retrieval. Antibody LS-B572 concentration 5 ug/ml.

**Immunofluorescence Image:**



Immunofluorescence of IL-21 Receptor in Rat Lung cells with IL-21 Receptor antibody at 20 ug/ml.

**Western Blot Image:**



Western blot of IL-21 receptor expression in human Raji cell lysate with IL-21 Receptor antibody at 1 ug /ml.

**Requested From:**

Japan

Laboratory Reagent For In Vitro Research Use Only

Not for resale without prior written consent from LifeSpan BioSciences, Inc.

Created on 9/24/2014

© 2014 LifeSpan BioSciences