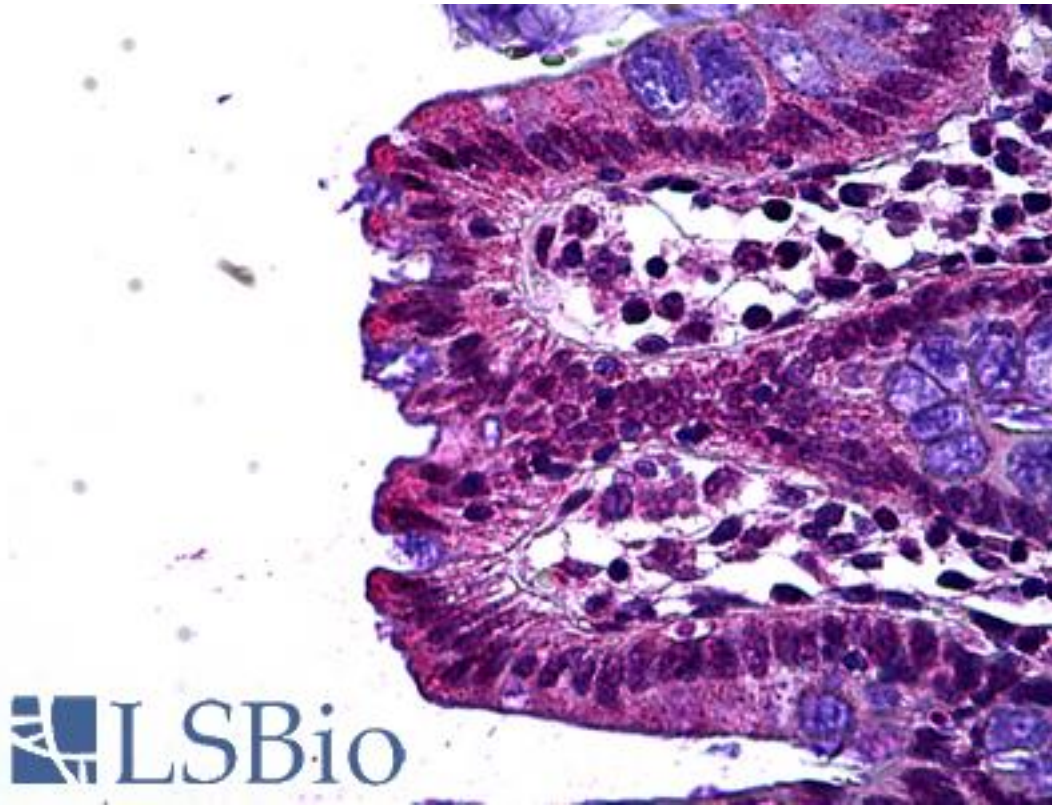


LEO1 Rabbit anti-Human Polyclonal (aa550-600) Antibody - LS-B5697 - LSBio

CatalogID:	LS-B5697
Validation:	This antibody replaces catalog number LS-C71610. It has been validated for use in the following assays: IHC-P.
Target:	Leo1, Paf1/RNA polymerase II complex component, homolog (<i>S. cerevisiae</i>)
Synonyms:	LEO1 Antibody, RDL Antibody
Host	LEO1 antibody was produced in Rabbit
Clonality:	Polyclonal
Isotype:	IgG
Immunogen Species:	LEO1 antibody was raised against Human
Antigen Type:	Synthetic peptide
Immunogen:	LEO1 antibody was raised against a synthetic peptide which maps to a region between residues 550 and 600 of human senescence downregulated leo1-like using the numbering given in TrEMBL entry Q8WVC0 (GeneID 123169).
Specificity:	Specific for human Leo1 protein. Other species have not been tested.
Epitope:	aa550-600
Reactivity:	Human
Purification:	Immunoaffinity purified
Presentation:	Tris-citrate/phosphate buffer, pH 7.5, 0.1% sodium azide
Recommended Storage:	Short term 4°C, long term aliquot and store at -20°C, avoid freeze thaw cycles.
Usage Summary:	Suitable for use in Immunofluorescence, Western Blot and Immunoprecipitation.
Uses:	IHC - Paraffin (5 µg/ml), Immunofluorescence (1:500 - 1:1500), Western blot (1:1000 - 1:5000), Immunoprecipitation (Optimal dilution to be determined by the researcher)
Size:	50 µl
Concentration:	1 mg/ml

Immunohistochemistry Image:



Anti-LEO1 antibody IHC of human colon, epithelium. Immunohistochemistry of formalin-fixed, paraffin-embedded tissue after heat-induced antigen retrieval. Antibody LS-B5697 concentration 5 ug/ml.

Requested From:

Japan

Laboratory Reagent For In Vitro Research Use Only

Not for resale without prior written consent from LifeSpan BioSciences, Inc.

Created on 9/24/2014

© 2014 LifeSpan BioSciences