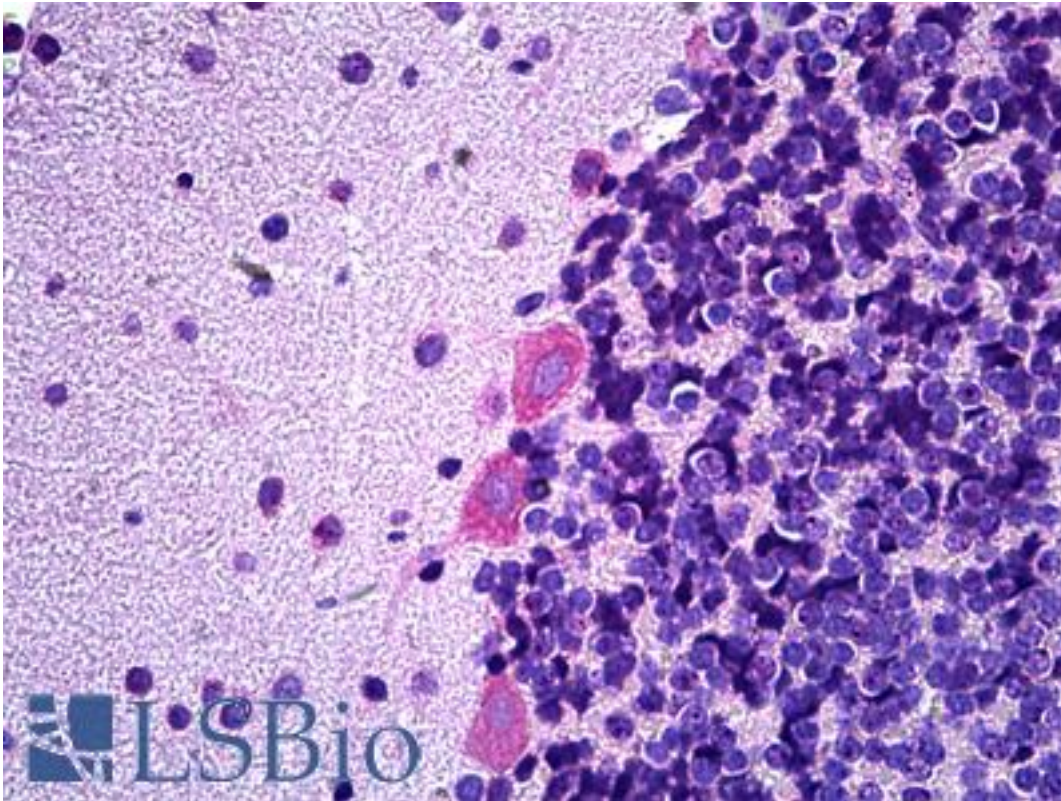


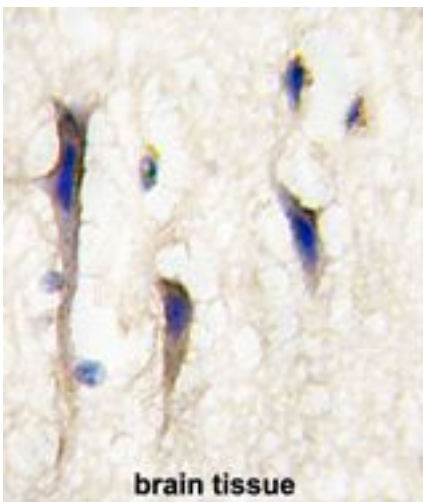
ARHGEF9 / Collybistin Rabbit anti-Rat Polyclonal (Internal) Antibody - LS-B5695 - LSBio	
CatalogID:	LS-B5695
Validation:	This antibody replaces catalog number LS-C98569. It has been validated for use in the following assays: IHC-P.
Target:	Cdc42 guanine nucleotide exchange factor (GEF) 9 (ARHGEF9)
Synonyms:	ARHGEF9 Antibody, ARHDH9 Antibody, EIEE8 Antibody, HPEM-2 Antibody, KIAA0424 Antibody, PEM-2 homolog Antibody, PEM2 Antibody, COLLYBISTIN Antibody, HPEM-2 collybistin Antibody, PEM-2 Antibody
Host	ARHGEF9 antibody was produced in Rabbit
Clonality:	Polyclonal
Immunogen Species:	ARHGEF9 / Collybistin antibody was raised against Rat
Antigen Type:	Synthetic peptide
Immunogen:	ARHGEF9 / Collybistin antibody was raised against kLH conjugated synthetic peptide selected from the Center region of rat Arhgef9.
Specificity:	The immunogenic sequence used to generate this antibody is taken from the rat sequence and shares 100% homology with the human sequence. Please note that the antibody has been tested only with human samples at this time. It has not been evaluated for its ability to detect the rat protein.
Epitope:	Internal
Reactivity:	Rat, Human
Purification:	Immunoaffinity purified
Presentation:	PBS, 0.09% sodium azide
Recommended Storage:	Short term 4°C, long term aliquot and store at -20°C, avoid freeze thaw cycles.
Usage Summary:	Please note that although the immunogenic sequence for this antibody is taken from rat, all testing has been performed on human samples. The antibody is expected to detect the rat protein since rat is the immunogenic source, but this has not been confirmed experimentally at this time.
Uses:	IHC - Paraffin (10 µg/ml), Western blot (1:1000) (Optimal dilution to be determined by the researcher)
Size:	200 µl
Concentration:	0.5 mg/ml

Immunohistochemistry Image:



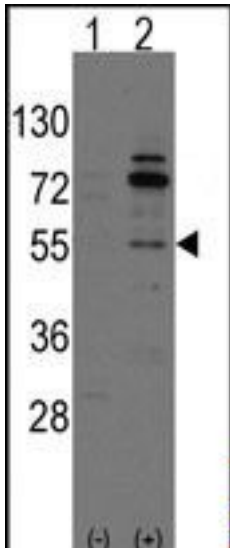
Anti-ARHGEF9 antibody IHC of rat brain, Purkinje cells. Immunohistochemistry of formalin-fixed, paraffin-embedded tissue after heat-induced antigen retrieval. Antibody LS-B5695 concentration 10 ug/ml.

Immunohistochemistry Image:



Formalin-fixed and paraffin-embedded human brain tissue reacted with Arhgef9 Antibody (Center) , which was peroxidase-conjugated to the secondary antibody, followed by DAB staining. This data demonstrates the use of this antibody for immunohistochemistry; clinical relevance has not been evaluated.

Western Blot Image:



Western blot of Arhgef9 (arrow) using rabbit polyclonal Arhgef9 Antibody (C-term) LS-B5695. 293 cell lysates (2 ug/lane) either nontransfected (Lane 1) or transiently transfected with the Arhgef9 gene (Lane 2).

Requested From:

Japan

Laboratory Reagent For In Vitro Research Use Only

Not for resale without prior written consent from LifeSpan BioSciences, Inc.

Created on 9/24/2014

© 2014 LifeSpan BioSciences