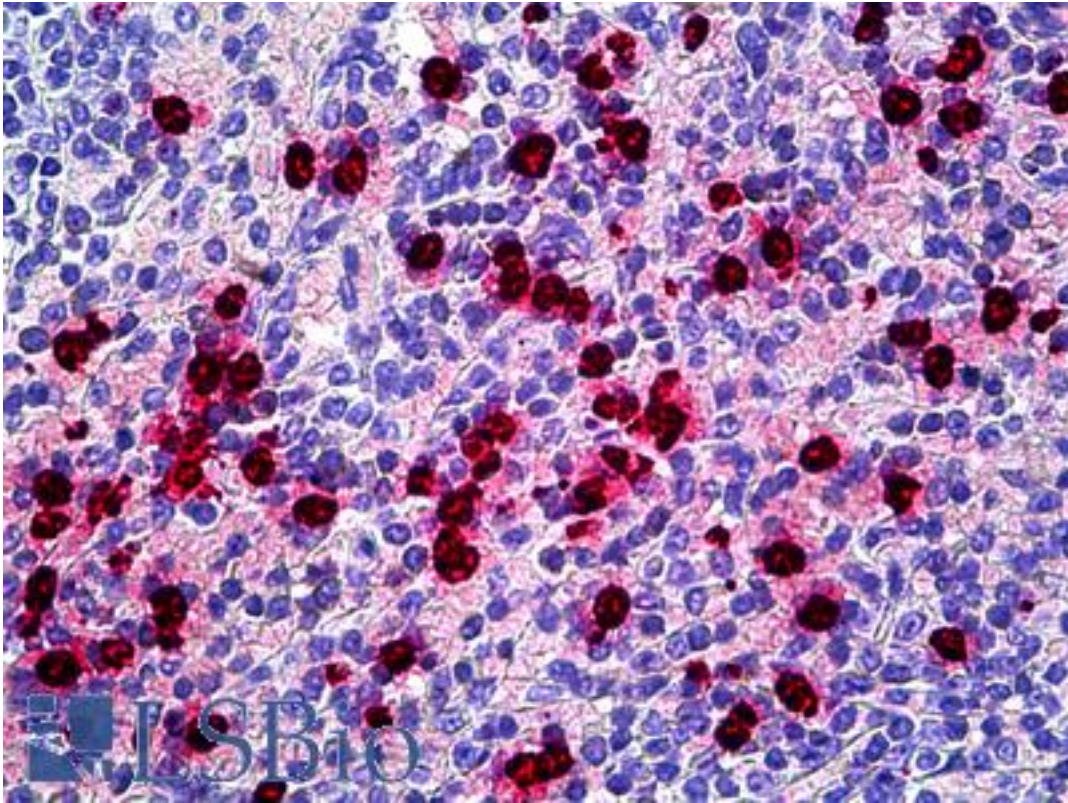


LF / LTF / Lactoferrin Rabbit anti-Human Polyclonal (FITC) Antibody - LS-B5693 - LSBio	
<b>CatalogID:</b>	LS-B5693
<b>Validation:</b>	This antibody replaces catalog number LS-C25057. It has been validated for use in the following assays: IHC-P.
<b>Target:</b>	lactotransferrin (LTF)
<b>Synonyms:</b>	LTF Antibody, GIG12 Antibody, Growth-inhibiting protein 12 Antibody, HLF2 Antibody, Lactotransferrin Antibody, Lactoferrin Antibody, LF Antibody, Neutrophil lactoferrin Antibody, Talalactoferrin Antibody
<b>Host</b>	LTF antibody was produced in Rabbit
<b>Clonality:</b>	Polyclonal
<b>Isotype:</b>	IgG
<b>Conjugations:</b>	Fluorescein (FITC)
<b>Immunogen Species:</b>	LF / LTF / Lactoferrin antibody was raised against Human
<b>Immunogen:</b>	LF / LTF / Lactoferrin antibody was raised against purified Lactoferrin from human colostrum.
<b>Specificity:</b>	Recognizes human milk lactoferrin. Does not cross-react with other milk or serum proteins. Species cross-reactivity: May cross-react with lactoferrin from other species.
<b>Reactivity:</b>	Human
<b>Purification:</b>	Immunoaffinity purified
<b>Presentation:</b>	Sodium phosphate, pH 7.2, 1 mg/ml BSA, 0.05% sodium azide.
<b>Recommended Storage:</b>	Long term: Add glycerol (40-50%) -20°C; Short term: +4°C
<b>Usage Summary:</b>	Suitable for use in Immunocytochemistry, Flow Cytometry, Immunocytochemistry and Immunofluorescence. Immunocytochemistry, Immunocytochemistry, Flow Cytometry, Immunofluorescence: 1:50-1:200.
<b>Uses:</b>	IHC - Paraffin (5 µg/ml), ICC, Immunofluorescence (1:50 - 1:200), Flow Cytometry (Optimal dilution to be determined by the researcher)
<b>Size:</b>	50 µg
<b>Concentration:</b>	1 mg/ml

**Immunohistochemistry Image:**



Anti-LTF / Lactoferrin antibody IHC of human spleen, neutrophils. Immunohistochemistry of formalin-fixed, paraffin-embedded tissue after heat-induced antigen retrieval. Antibody LS-B5693 concentration 5 ug/ml.

**Requested From:**

Japan

Laboratory Reagent For In Vitro Research Use Only

Not for resale without prior written consent from LifeSpan BioSciences, Inc.

Created on 9/24/2014

© 2014 LifeSpan BioSciences