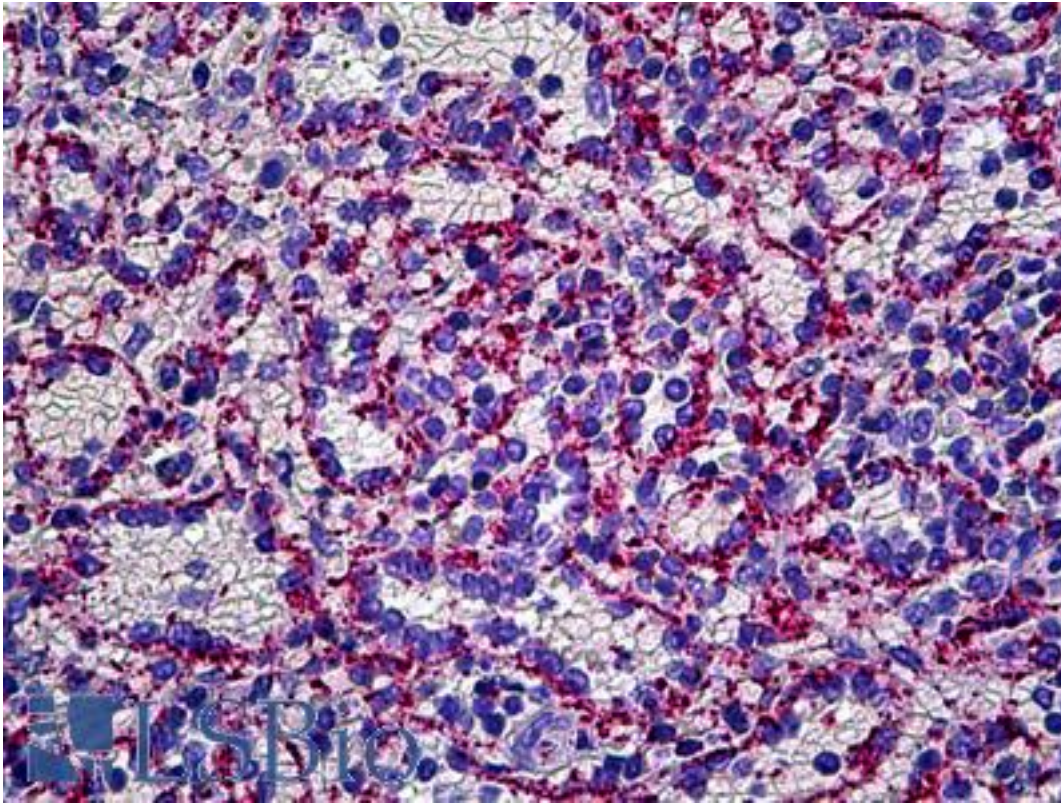


VWF / Von Willebrand Factor Sheep anti-Human Polyclonal (FITC) Antibody - LS-B5692 - LSBio	
<b>CatalogID:</b>	LS-B5692
<b>Validation:</b>	This antibody replaces catalog number LS-C11051. It has been validated for use in the following assays: IHC-P.
<b>Target:</b>	von Willebrand factor (VWF)
<b>Synonyms:</b>	VWF Antibody, Coagulation factor VIII VWF Antibody, F8VWF Antibody, VWD Antibody, Von Willebrand factor Antibody
<b>Host</b>	VWF antibody was produced in Sheep
<b>Clonality:</b>	Polyclonal
<b>Isotype:</b>	IgG
<b>Conjugations:</b>	Fluorescein (FITC)
<b>Immunogen Species:</b>	VWF / Von Willebrand Factor antibody was raised against Human
<b>Immunogen:</b>	VWF / Von Willebrand Factor antibody was raised against human von Willebrand Factor Antigen (vWF) prepared from citrated human plasma (>95%).
<b>Specificity:</b>	Recognizes human Von Willebrand Factor (vWF). No arcs when tested by IEP against human serum. Identity has been confirmed by double diffusion (Ouchterlony) vs. human vWF and an anti-human vWF of known specificity.
<b>Reactivity:</b>	Human
<b>Purification:</b>	Ion exchange chromatography
<b>Presentation:</b>	PBS, pH 7.2, 0.09% sodium azide.
<b>Recommended Storage:</b>	Short term 4°C, long term aliquot and store at -20°C, avoid freeze thaw cycles.
<b>Usage Summary:</b>	Suitable for use in Immunofluorescence. Immunofluorescence (Direct): 1:25-1:50 (frozen sections of human tonsil).
<b>Uses:</b>	IHC - Paraffin (1:200), IHC - Frozen, Immunofluorescence (1:25 - 1:50) (Optimal dilution to be determined by the researcher)
<b>Size:</b>	50 µl

**Immunohistochemistry Image:**



Anti-VWF antibody IHC of human spleen, endothelium. Immunohistochemistry of formalin-fixed, paraffin-embedded tissue after heat-induced antigen retrieval. Antibody LS-B5692 concentration 5 ug/ml.

**Requested From:**

Japan

Laboratory Reagent For In Vitro Research Use Only

Not for resale without prior written consent from LifeSpan BioSciences, Inc.

Created on 9/24/2014

© 2014 LifeSpan BioSciences