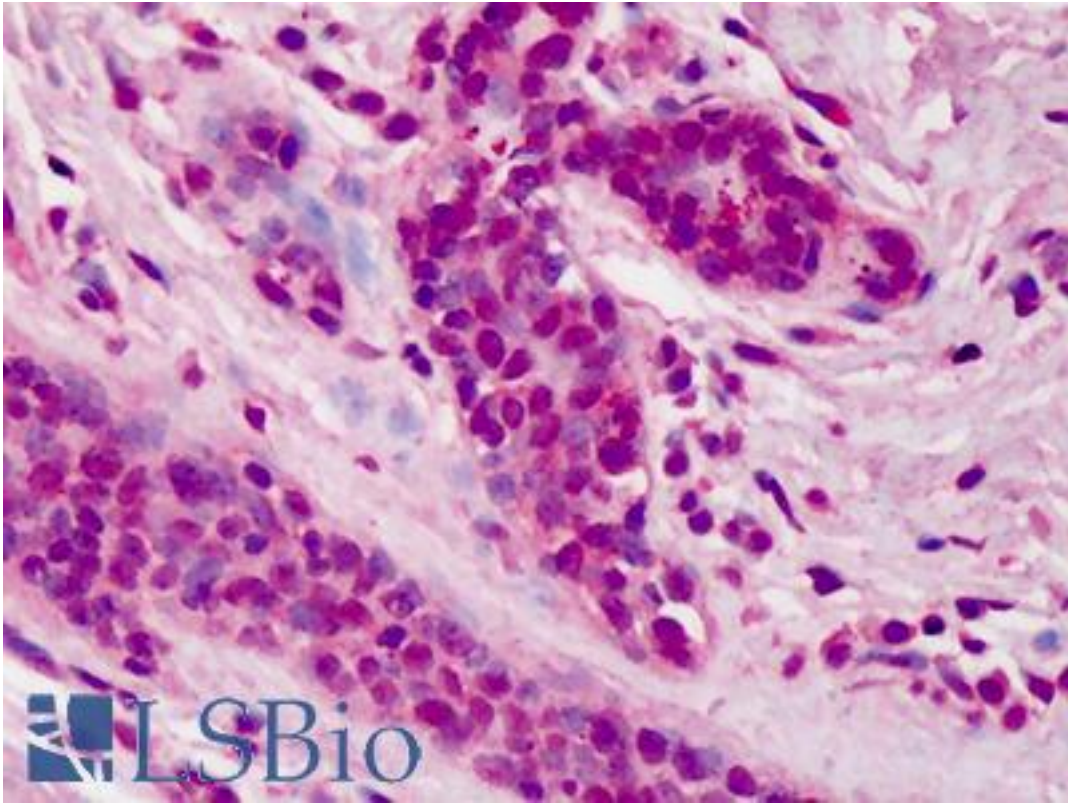


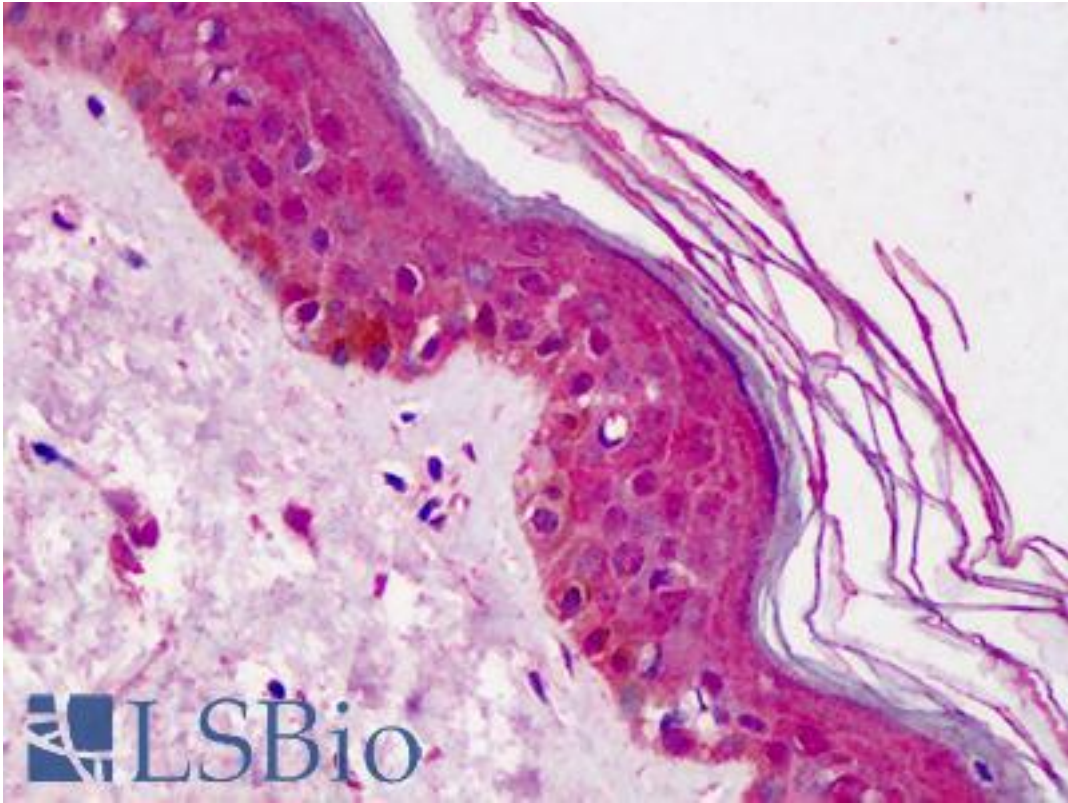
DOK1 Rabbit anti-Human Polyclonal (C-Terminus) Antibody - LS-B561 - LSBio	
CatalogID:	LS-B561
Validation:	This antibody replaces catalog number LS-C253. It has been validated for use in the following assays: IHC.
Target:	docking protein 1, 62kDa (downstream of tyrosine kinase 1) (DOK1)
Synonyms:	DOK1 Antibody, Docking protein 1 Antibody, Gap binding protein p62dok Antibody, p62(dok) Antibody, p62DOK Antibody, Pp62 Antibody
Host	DOK1 antibody was produced in Rabbit
Clonality:	Polyclonal
Immunogen Species:	DOK1 antibody was raised against Human
Antigen Type:	Synthetic peptide
Immunogen:	DOK1 antibody was raised against synthetic peptide from human DOK1.
Specificity:	peptide corresponding to amino acids near the carboxy terminus of human p62dok
Epitope:	C-Terminus
Reactivity:	Human
Purification:	Immunoaffinity purified
Presentation:	PBS, 0.02% sodium azide.
Recommended Storage:	Short term 4°C, long term aliquot and store at -20°C, avoid freeze thaw cycles. Store undiluted.
Usage Summary:	Immunohistochemistry: LS-B561 was validated for use in immunohistochemistry on a panel of 21 formalin-fixed, paraffin-embedded (FFPE) human tissues after heat induced antigen retrieval in pH 6.0 citrate buffer. After incubation with the primary antibody, slides were incubated with biotinylated secondary antibody, followed by alkaline phosphatase-streptavidin and chromogen. The stained slides were evaluated by a pathologist to confirm staining specificity. The optimal working concentration for LS-B561 was determined to be 5 ug/ml.
Uses:	IHC - Paraffin (5 µg/ml), ICC, Western blot (0.5 - 1 µg/ml) (Optimal dilution to be determined by the researcher)
Size:	50 µg
Concentration:	0.5 mg/ml

Immunohistochemistry Image:



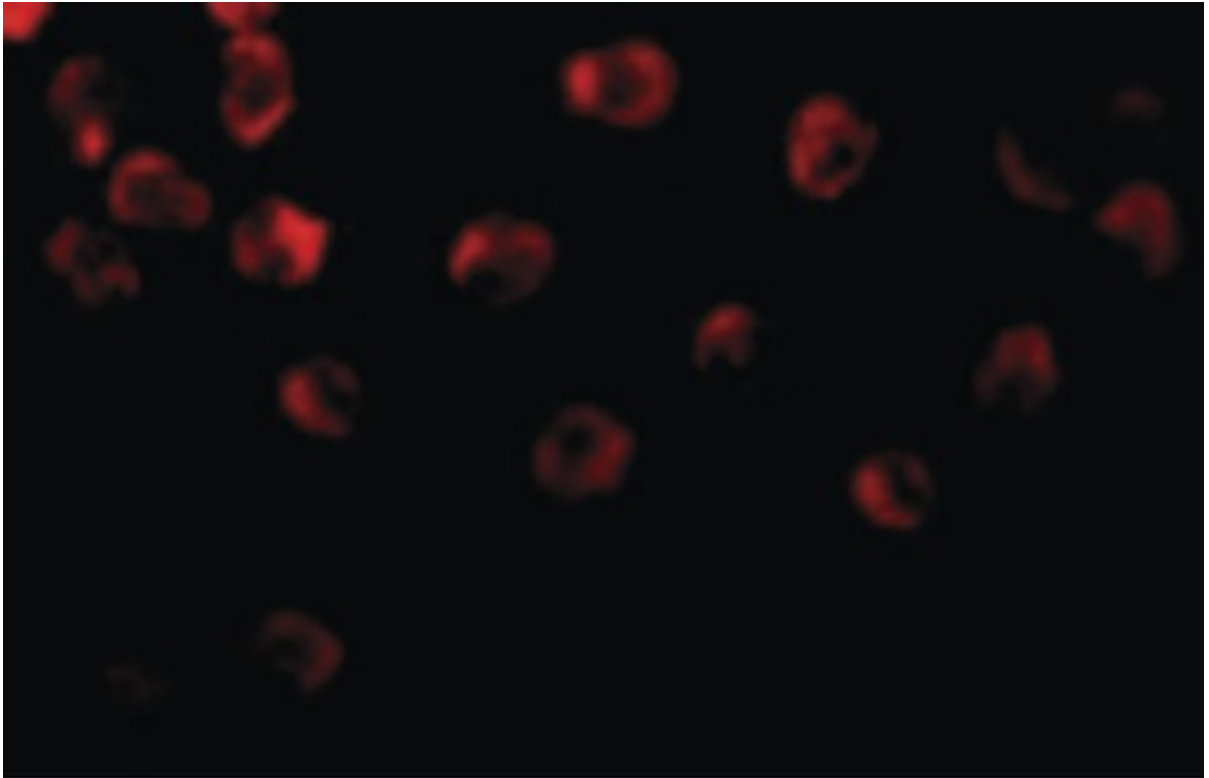
Anti-DOK1 antibody IHC of human breast. Immunohistochemistry of formalin-fixed, paraffin-embedded tissue after heat-induced antigen retrieval. Antibody LS-B561 concentration 5 ug/ml.

Immunohistochemistry Image:



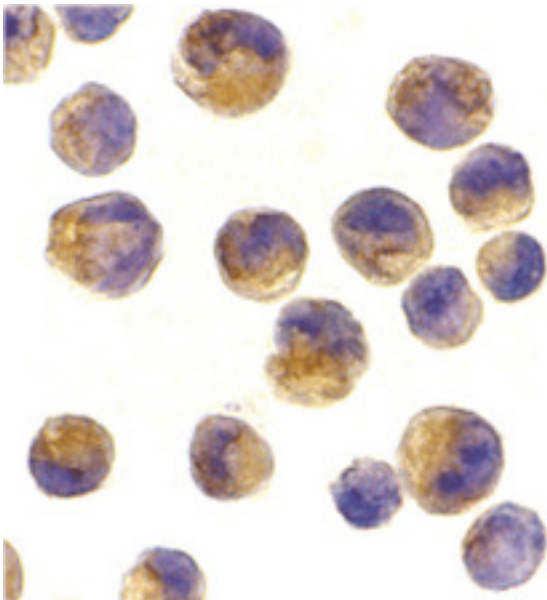
Anti-DOK1 antibody IHC of human skin. Immunohistochemistry of formalin-fixed, paraffin-embedded tissue after heat-induced antigen retrieval. Antibody LS-B561 concentration 5 ug/ml.

Immunofluorescence Image:



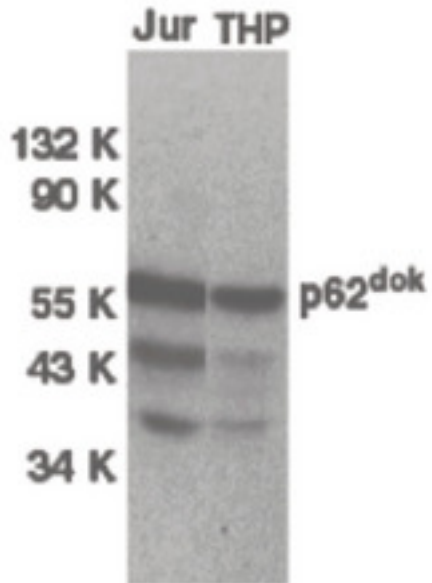
Immunofluorescence of DOK1 in K562 cells with DOK1 antibody at 10 ug/ml.

Immunocytochemistry Image:



Immunocytochemistry of DOK1 in K562 cells with DOK1 antibody at 2 ug/ml.

Western Blot Image:



Western blot of DOK1 in Jurkat (Jur) and THP-1 (THP) cell lysates with DOK1 antibody at 1 ug/ml.

Requested From:

Japan

Laboratory Reagent For In Vitro Research Use Only

Not for resale without prior written consent from LifeSpan BioSciences, Inc.

Created on 9/24/2014

© 2014 LifeSpan BioSciences