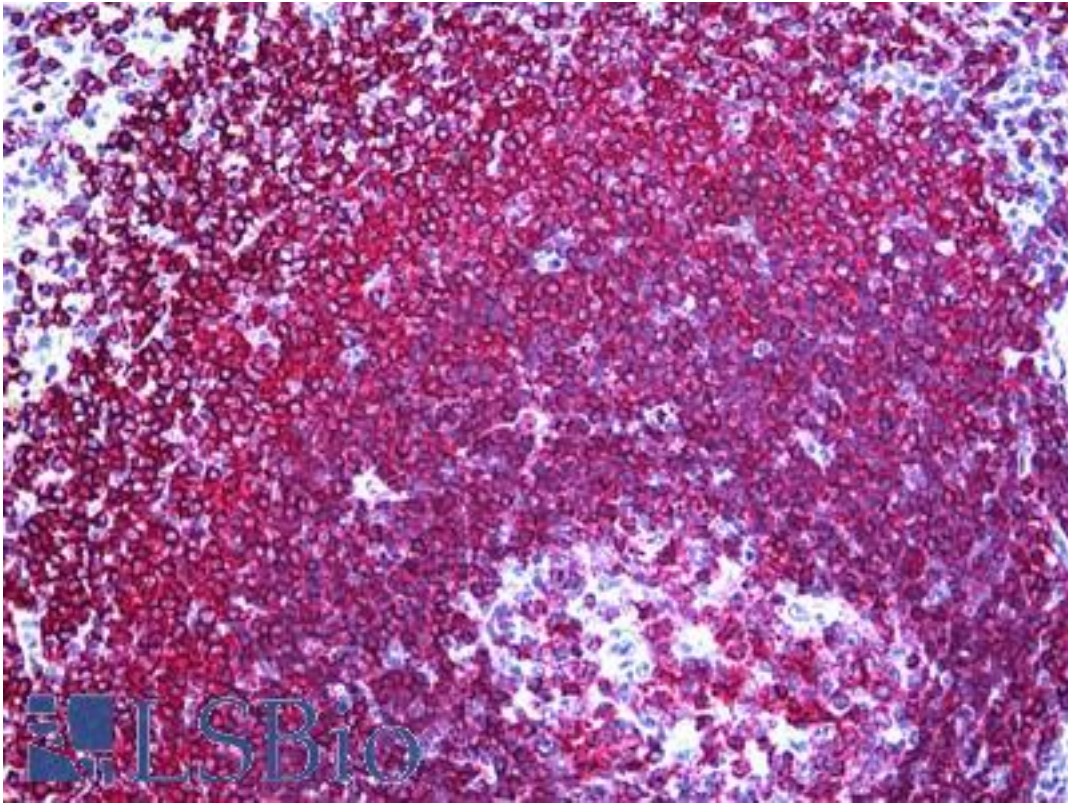


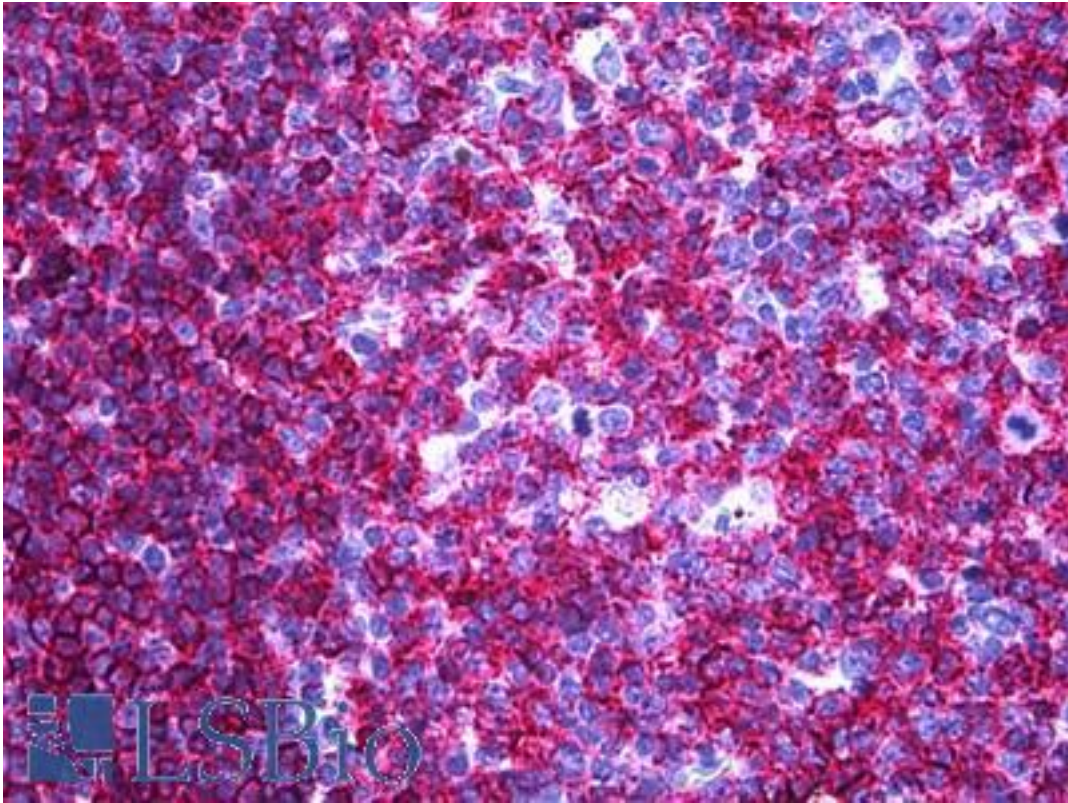
CD45RA Mouse anti-Human Monoclonal (MB1) Antibody - LS-B5572 - LSBio	
CatalogID:	LS-B5572
Validation:	This antibody replaces catalog number LS-C134883. It has been validated for use in the following assays: IHC-P.
Target:	CD45RA
Host	CD45RA antibody was produced in Mouse
Clonality:	Monoclonal
Isotype:	IgG1
Clone Name:	MB1
Immunogen Species:	CD45RA antibody was raised against Human
Specificity:	Lymphoma diagnosis. MB 1 reacts with all B-cells and up to 50% of the mature T-lymphocytes. Western Blot: antibody directed against 200, 110, 100, kD proteins.
Reactivity:	Human
Purification:	Tissue culture supernatant
Presentation:	Tissue culture supernatant, 0.1% sodium azide
Recommended Storage:	Long term: -20°C; Short term: +4°C. Avoid repeat freeze-thaw cycles.
Usage Summary:	The antibody can be used in immunohistochemistry on frozen and paraffin embedded tissue. Instructions for use For use in paraffin embedded tissue no antigen pretreatment is needed but better results could be obtained if a TUF (cat. no. T 10333) pretreatment is performed with an antibody dilution of 1:20. Working dilution for regular immunohistochemistry is approximately 1:5-1:40, but the optimal dilution should be tested by serial dilutions. Positive control Tonsil.
Uses:	IHC - Paraffin (1:100), IHC - Frozen (Optimal dilution to be determined by the researcher)
Size:	50 µl

Immunohistochemistry Image:



Anti-CD45RA antibody IHC of human spleen. Immunohistochemistry of formalin-fixed, paraffin-embedded tissue after heat-induced antigen retrieval. Antibody LS-B5572 dilution 1:100.

Immunohistochemistry Image:



Anti-CD45RA antibody IHC of human tonsil. Immunohistochemistry of formalin-fixed, paraffin-embedded tissue after heat-induced antigen retrieval. Antibody LS-B5572 dilution 1:100.

Requested From:

Japan

Laboratory Reagent For In Vitro Research Use Only

Not for resale without prior written consent from LifeSpan BioSciences, Inc.

Created on 9/24/2014

© 2014 LifeSpan BioSciences