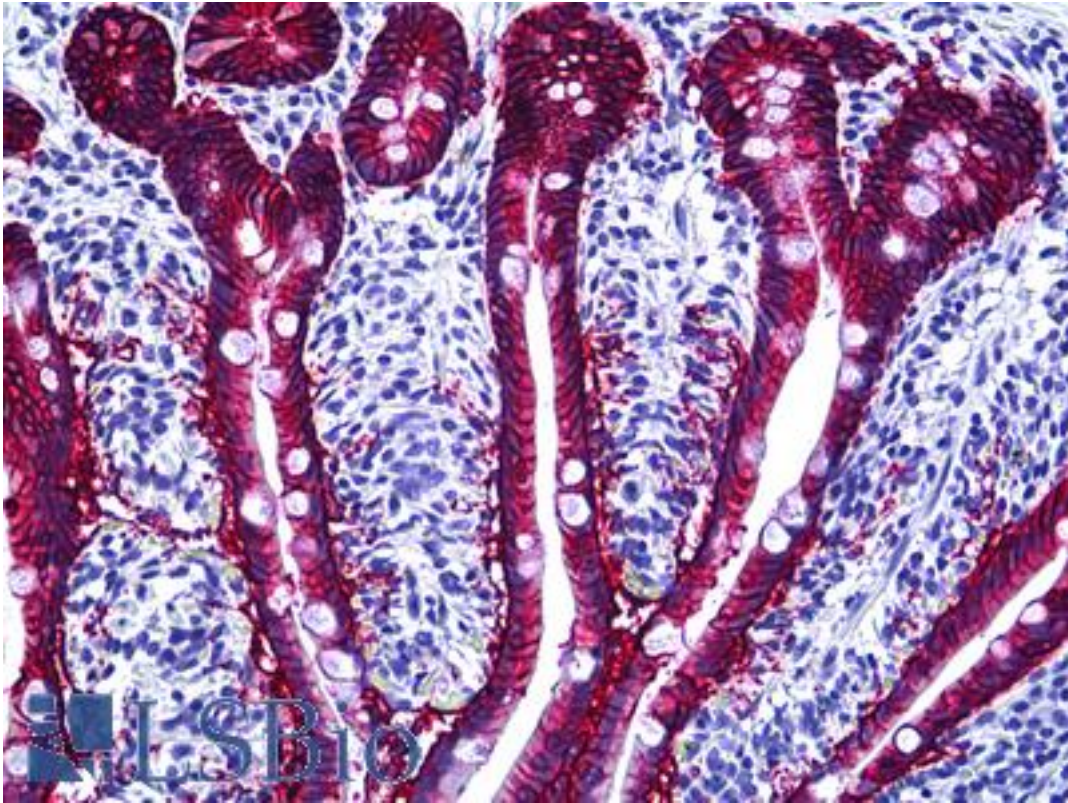


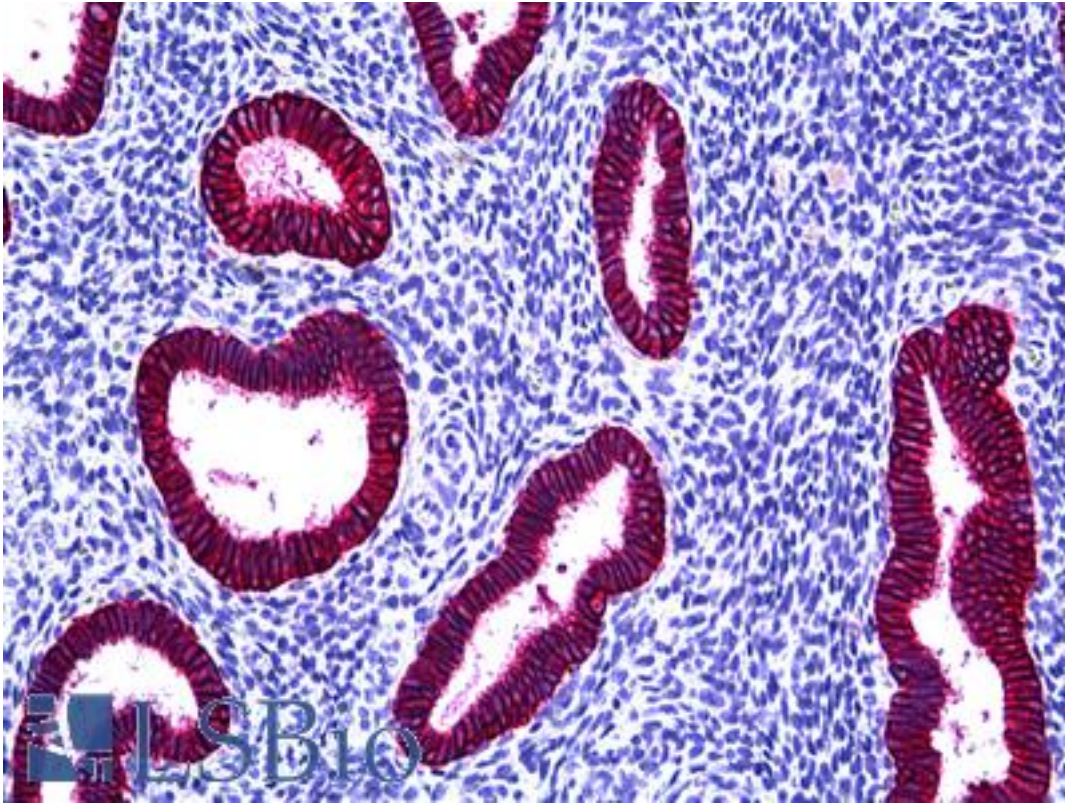
ESA / EPCAM Mouse anti-Human Monoclonal (VU-1D9) Antibody - LS-B5566 - LSBio	
CatalogID:	LS-B5566
Validation:	This antibody replaces catalog number LS-C134853. It has been validated for use in the following assays: IHC-P.
Target:	epithelial cell adhesion molecule (EPCAM)
Synonyms:	EPCAM Antibody, 323/A3 Antibody, ACSTD1 Antibody, 17-1A Antibody, CD326 Antibody, EGP Antibody, EGP34 Antibody, Epithelial glycoprotein Antibody, GA733-2 Antibody, HNPCC8 Antibody, Ep-CAM Antibody, ESA Antibody, HEGP314 Antibody, KS 1/4 antigen Antibody, KS1/4 Antibody, KSA Antibody, M1S2 Antibody, MIC18 Antibody, MK-1 Antibody, MH99 Antibody, TROP1 Antibody, TACST-1 Antibody, TACSTD1 Antibody, CD326 antigen Antibody, CO-17A Antibody, DIAR5 Antibody, EGP-2 Antibody, EGP314 Antibody, EGP40 Antibody, Epithelial glycoprotein 314 Antibody, HEA125 Antibody, Ly74 Antibody, M4S1 Antibody, MOC31 Antibody
Host	EPCAM antibody was produced in Mouse
Clonality:	Monoclonal
Isotype:	IgG1
Clone Name:	VU-1D9
Immunogen Species:	ESA / EPCAM antibody was raised against Human
Specificity:	Ep-Cam (also called ESA, EGP40, 17-1A antigen, KSA, GA7333-2) is a 40kD epithelial protein expressed on baso-lateral cell surfaces in very many epithelial tissues (but absent from mesothelial tissues). The extracellular domain has a cysteine-rich repeat and a small domain with homology to nidogen. It is a homophillic cell-cell adhesion molecule, recently called Ep-CAM (Litvinov et al., 1994). It reacts with most epithelial cells and carcinomas.
Reactivity:	Human
Purification:	Purified
Presentation:	PBS, 15 mM sodium azide, pH 7.4
Recommended Storage:	Store at 4°C.
Usage Summary:	The antibody can be used for flow cytometry, ELISA, immunohistochemistry on paraffin-embedded sections and Western blotting.
Uses:	IHC - Paraffin (1:100), Western blot, Flow Cytometry, ELISA (Optimal dilution to be determined by the researcher)
Size:	50 µl

Immunohistochemistry Image:



Anti-EPCAM antibody IHC of human intestine. Immunohistochemistry of formalin-fixed, paraffin-embedded tissue after heat-induced antigen retrieval. Antibody LS-B5566 dilution 1:100.

Immunohistochemistry Image:



Anti-EPCAM antibody IHC of human uterus, endometrium. Immunohistochemistry of formalin-fixed, paraffin-embedded tissue after heat-induced antigen retrieval. Antibody LS-B5566 dilution 1:100.

Requested From:

Japan

Laboratory Reagent For In Vitro Research Use Only

Not for resale without prior written consent from LifeSpan BioSciences, Inc.

Created on 9/24/2014

© 2014 LifeSpan BioSciences