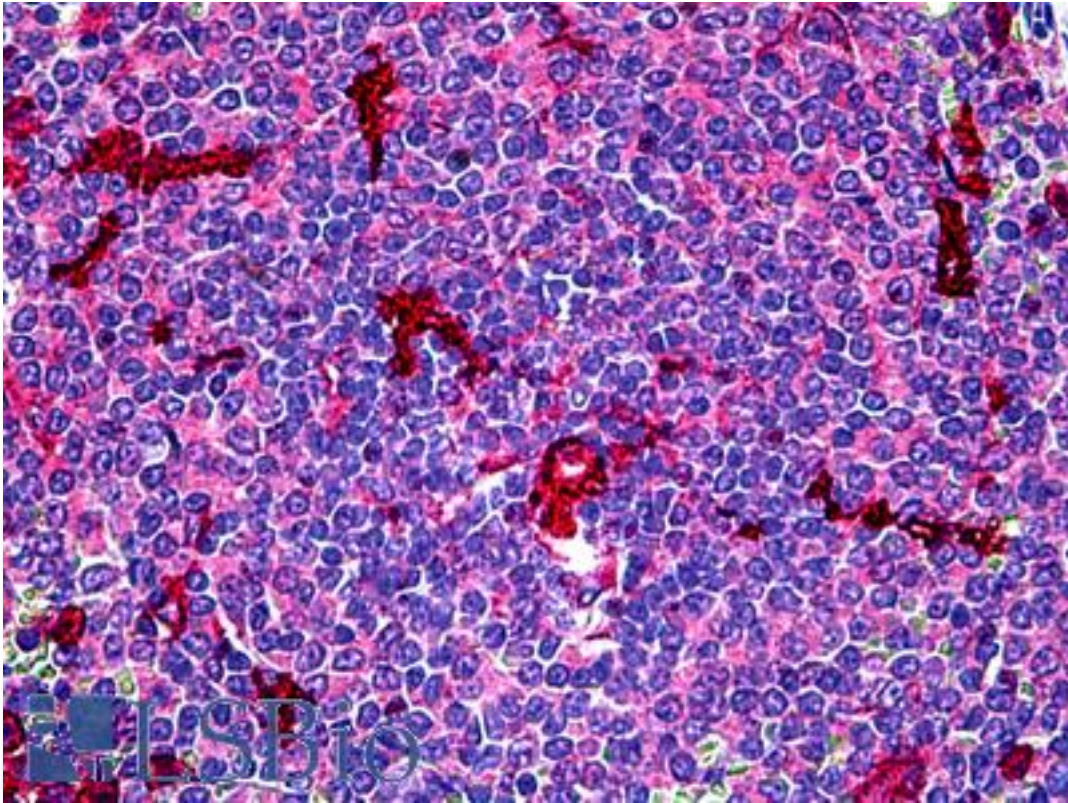


C5AR1 / CD88 / C5a Receptor Mouse anti-Human Monoclonal (P12/1) Antibody - LS-B5559 - LSBio	
<b>CatalogID:</b>	LS-B5559
<b>Validation:</b>	This antibody replaces catalog number LS-C134838. It has been validated for use in the following assays: IHC-P.
<b>Target:</b>	complement component 5a receptor 1 (C5AR1)
<b>Synonyms:</b>	C5AR1 Antibody, C5A Antibody, C5a-R Antibody, C5a ligand Antibody, C5a receptor Antibody, CD88 Antibody, C5a anaphylatoxin receptor Antibody, C5AR Antibody, C5R1 Antibody, CD88 antigen Antibody
<b>Family / Subfamily:</b>	GPCR / Anaphylatoxin
<b>Host</b>	C5AR1 antibody was produced in Mouse
<b>Clonality:</b>	Monoclonal
<b>Isotype:</b>	IgG2a
<b>Clone Name:</b>	P12/1
<b>Immunogen Species:</b>	C5AR1 / CD88 / C5a Receptor antibody was raised against Human
<b>Antigen Type:</b>	Synthetic peptide
<b>Immunogen:</b>	C5AR1 / CD88 / C5a Receptor antibody was raised against c5aR - peptide: Met1 - Asn31.
<b>Specificity:</b>	LS-B5559 recognizes the C5a receptor (C5aR) CD88, which is predominantly expressed on cells of the myeloid lineage. Clone P12/1 was raised against a synthetic peptide comprising the N-terminal extracellular domain of the C5aR (met1-Asn31). Clone P12/1 does not inhibit the binding of C5a to its receptor. Immunogen: C5aR - peptide: Met1 - Asn31.
<b>Reactivity:</b>	Human
<b>Purification:</b>	Purified
<b>Presentation:</b>	0.09% sodium azide
<b>Recommended Storage:</b>	Short term 4°C, long term aliquot and store at -20°C, avoid freeze thaw cycles.
<b>Usage Summary:</b>	Flow cytometry: Use 10 ul of the suggested working dilution (1/50-1/100) to label 5 x 10 <sup>5</sup> cells in 100ul.
<b>Uses:</b>	IHC - Paraffin (1:200), IHC - Frozen, Western blot, Flow Cytometry (Optimal dilution to be determined by the researcher)
<b>Size:</b>	50 µg
<b>Concentration:</b>	1 mg/ml

**Immunohistochemistry Image:**



Anti-C5AR1 / CD88 antibody IHC of human spleen. Immunohistochemistry of formalin-fixed, paraffin-embedded tissue after heat-induced antigen retrieval. Antibody LS-B5559 dilution 1:200.

**Requested From:**

Japan

Laboratory Reagent For In Vitro Research Use Only

Not for resale without prior written consent from LifeSpan BioSciences, Inc.

Created on 9/24/2014

© 2014 LifeSpan BioSciences