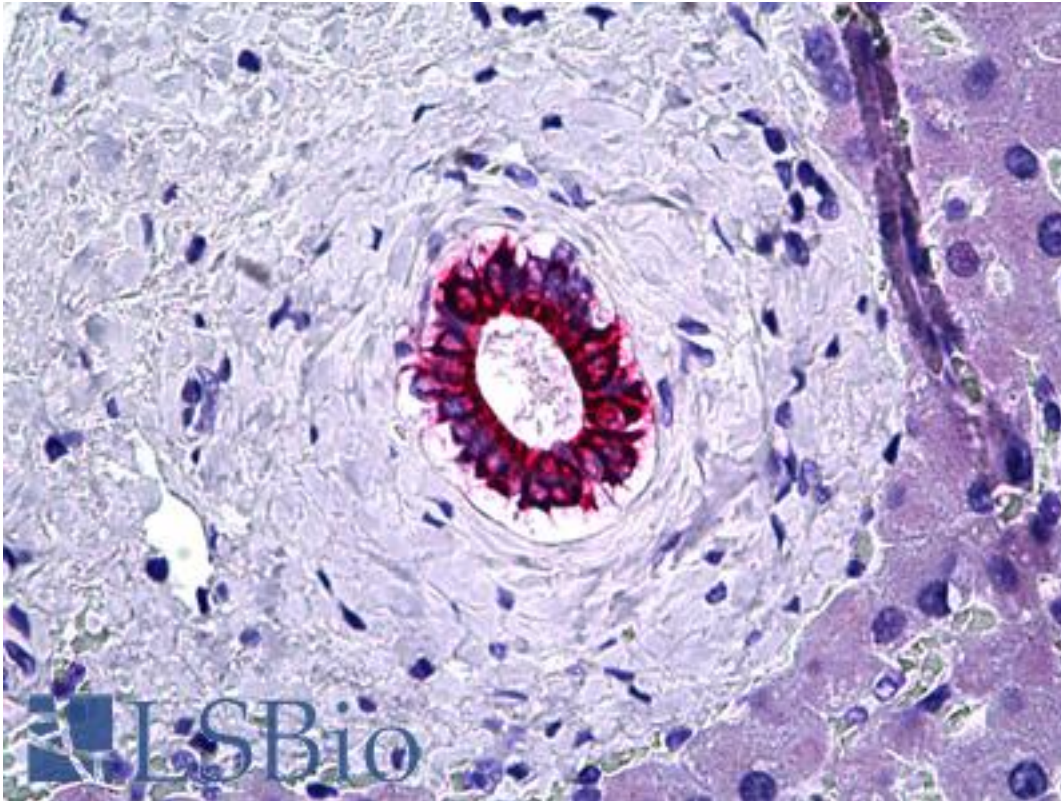


KRT8 / CK8 / Cytokeratin 8 Mouse anti-Human Monoclonal (C-51) Antibody - LS-B5555 - LSBio	
<b>CatalogID:</b>	LS-B5555
<b>Validation:</b>	This antibody replaces catalog number LS-C134823. It has been validated for use in the following assays: IHC-P.
<b>Target:</b>	keratin 8 (KRT8)
<b>Synonyms:</b>	KRT8 Antibody, CARD2 Antibody, CK-8 Antibody, CYK8 Antibody, Cytokeratin-8 Antibody, CK8 Antibody, K2C8 Antibody, K8 Antibody, KO Antibody, Keratin-8 Antibody, Type-II keratin Kb8 Antibody, Cytokeratin 8 Antibody, Keratin 8 Antibody
<b>Family / Subfamily:</b>	Keratin / not assigned-Keratin
<b>Host</b>	KRT8 antibody was produced in Mouse
<b>Clonality:</b>	Monoclonal
<b>Isotype:</b>	IgG1
<b>Clone Name:</b>	C-51
<b>Immunogen Species:</b>	KRT8 / CK8 / Cytokeratin 8 antibody was raised against Human
<b>Specificity:</b>	For frozen and paraffin embedded tissues the optimal dilutions have to be determined for use within each laboratory.
<b>Reactivity:</b>	Human
<b>Purification:</b>	Purified
<b>Presentation:</b>	PBS, 15 mM sodium azide, pH 7.4
<b>Recommended Storage:</b>	Short term 4°C, long term aliquot and store at -20°C, avoid freeze thaw cycles.
<b>Usage Summary:</b>	In immunocytochemistry on cultured cells it strongly reacts with methanol/acetone fixed cells of epithelial origin. In frozen section this antibody reacts with all simple epithelia derived structures). In paraffin embedded tissues a FKFM-fixation (40% formalin, acetic acid and distilled water 2:1:17 with 8.5 g NaCl/L) should be used. Methacarn and formalin fixatives produce less satisfactory results. A protease digestion is beneficial for the result. This antibody can also be used in Western blotting.
<b>Uses:</b>	IHC - Paraffin (1:50), IHC - Frozen, Western blot (Optimal dilution to be determined by the researcher)
<b>Size:</b>	50 µg

**Immunohistochemistry Image:**



Anti-KRT8 / Cytokeratin 8 antibody IHC of human liver, bile duct. Immunohistochemistry of formalin-fixed, paraffin-embedded tissue after heat-induced antigen retrieval. Antibody LS-B5555 dilution 1:50.

**Requested From:**

Japan

Laboratory Reagent For In Vitro Research Use Only

Not for resale without prior written consent from LifeSpan BioSciences, Inc.

Created on 9/24/2014

© 2014 LifeSpan BioSciences