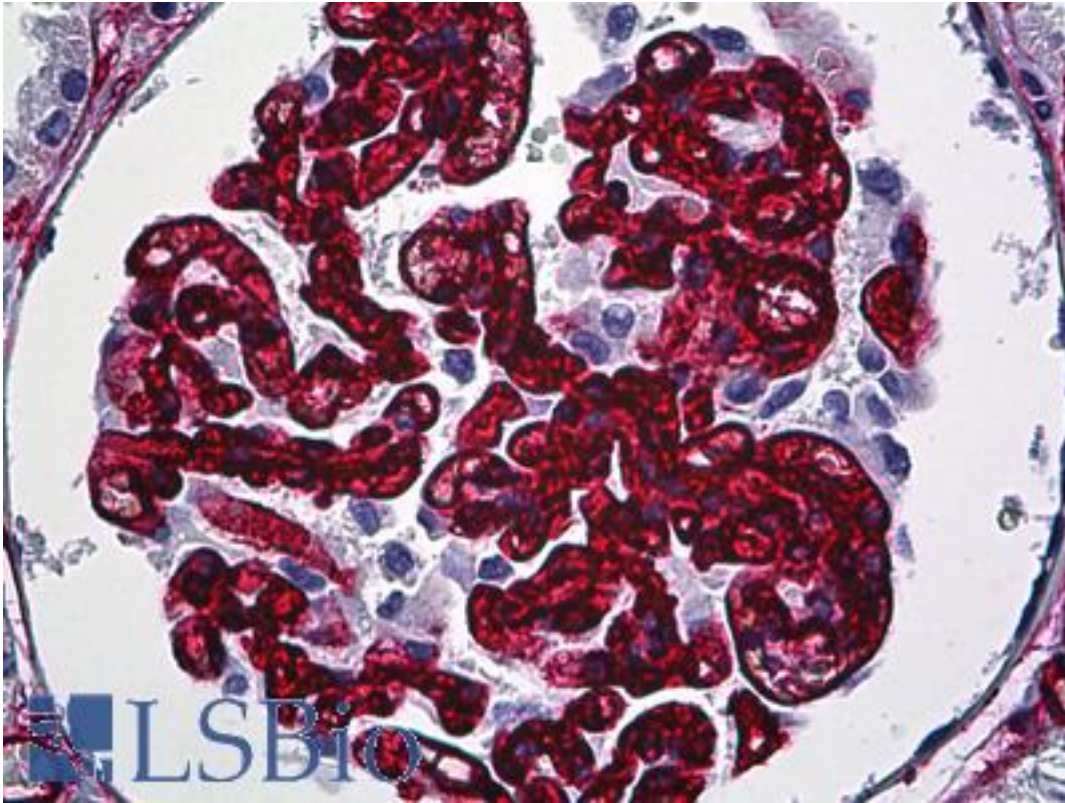


CD34 Mouse anti-Human Monoclonal (QBEnd/10) Antibody - LS-B5552 - LSBio

CatalogID:	LS-B5552
Validation:	This antibody replaces catalog number LS-C134827. It has been validated for use in the following assays: IHC-P.
Target:	CD34 molecule
Synonyms:	CD34 Antibody, CD34 molecule Antibody, CD34 antigen Antibody
Host	CD34 antibody was produced in Mouse
Clonality:	Monoclonal
Isotype:	IgG1
Clone Name:	QBEnd/10
Immunogen Species:	CD34 antibody was raised against Human
Antigen Type:	Membrane preparation
Immunogen:	CD34 antibody was raised against human endothelial vesicles.
Specificity:	The antibody recognizes the CD34 antigen, some cross reactions with vascular associated adventitia and some basement membranes. Ultrastructure studies, using an indirect immunogold technique on ultra thin sections of human umbilical artery, have revealed that this antigen is associated to a degree with the basoluminal surfaces of endothelium and shows a slight reaction with an intracytoplasmic vesicular compartment. Predominant staining is on the endothelial cell membrane. QBEND-10 immunoprecipitates a glycoprotein with a relative MW 110kD expressed on hematopoietic cells and on the established myeloid leukemic cell line KG1A. QBEND-10 recognizes the Class II epitope on CD34. This antibody does not cross-react with tested species such as sheep, cow, dog and rat. Clone is reported to cross react with Rhesus Monkey (2). Immunogen: human endothelial vesicles.
Reactivity:	Human
Purification:	Purified
Presentation:	PBS, 0.09% sodium azide
Recommended Storage:	Short term 4°C, long term aliquot and store at -20°C, avoid freeze thaw cycles.
Usage Summary:	The antibody can be used for flow cytometry, immunohistochemistry on frozen and paraffin embedded section, immunoprecipitation and Western blotting. Instructions for use Flow cytometry: Use 10 ul antibody (1:100-1:200 dilution) to label 106 cells in 100 ul Immunohistochemistry: This product does not require antigen retrieval using heat treatment or protein digestion. However staining of paraffin embedded formalin fixed tissues may be enhanced by enzyme pre-treatment using pronase or heat treatment using citrate buffer. Recommended dilution: 1:500 - 1:1000 for immunohistochemistry on paraffin sections. Recommended positive control tissue: Tonsil, bone marrow.
Uses:	IHC - Paraffin (1:800), IHC - Frozen, Western blot, Immunoprecipitation, Flow Cytometry (Optimal dilution to be determined by the researcher)
Size:	50 µg

Immunohistochemistry Image:



Anti-CD34 antibody IHC of human kidney, glomeruli. Immunohistochemistry of formalin-fixed, paraffin-embedded tissue after heat-induced antigen retrieval. Antibody LS-B5552 dilution 1:800.

Requested From:

Japan

Laboratory Reagent For In Vitro Research Use Only

Not for resale without prior written consent from LifeSpan BioSciences, Inc.

Created on 9/24/2014

© 2014 LifeSpan BioSciences