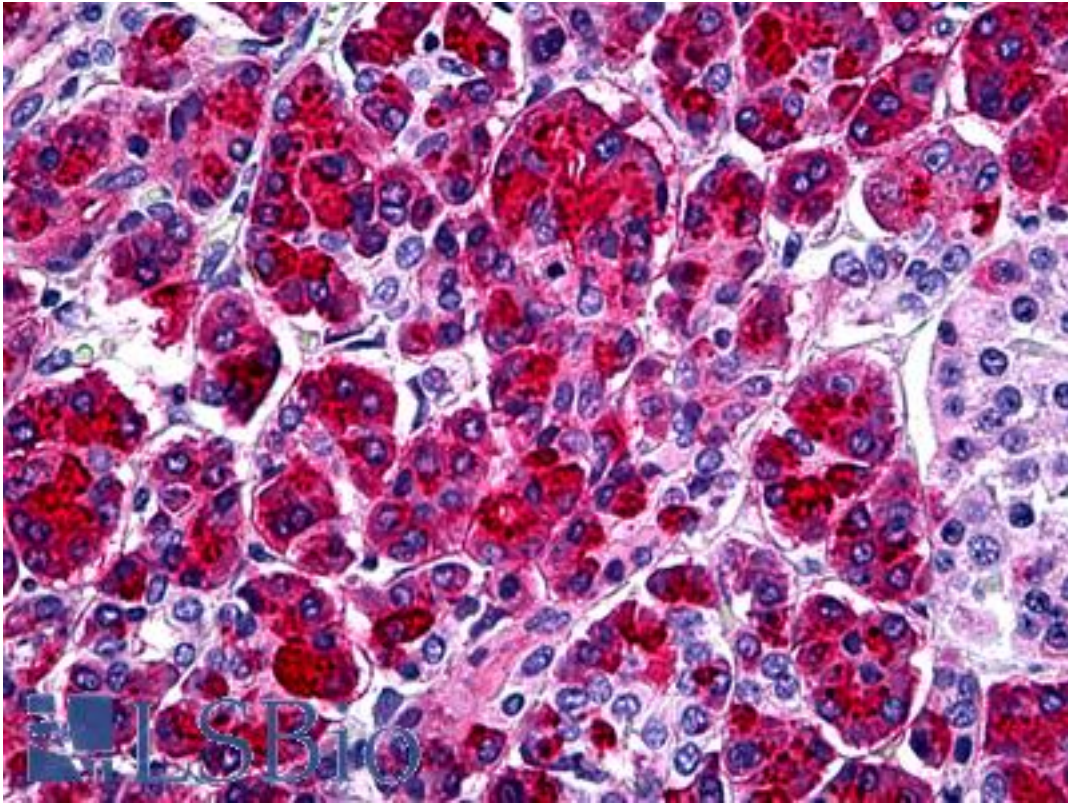


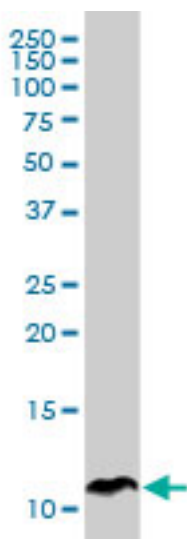
TATI / SPINK1 Mouse anti-Human Monoclonal (4D4) Antibody - LS-B5538 - LSBio	
CatalogID:	LS-B5538
Validation:	This antibody replaces catalog number LS-C133448. It has been validated for use in the following assays: IHC-P.
Target:	serine peptidase inhibitor, Kazal type 1 (SPINK1)
Synonyms:	SPINK1 Antibody, PCTT Antibody, PSTI Antibody, TCP Antibody, TATI Antibody, Spink3 Antibody
Host	SPINK1 antibody was produced in Mouse
Clonality:	Monoclonal
Isotype:	IgG2a,k
Clone Name:	4D4
Immunogen Species:	TATI / SPINK1 antibody was raised against Human
Immunogen:	TATI / SPINK1 antibody was raised against sPINK1 (AAH25790, 24 a.a. ~ 80 a.a) partial recombinant protein with GST tag. MW of the GST tag alone is 26 KDa.
Specificity:	Human SPINK1
Reactivity:	Human
Purification:	Protein A purified
Presentation:	PBS, pH 7.4. Sourced in Ascites.
Recommended Storage:	Short term 4°C, long term aliquot and store at -20°C, avoid freeze thaw cycles.
Usage Summary:	Immunohistochemistry: Formalin-fixed paraffin-embedded sections. Sandwich ELISA: Recombinant protein. Western Blot using tissue lysate and the recombinant protein used as the immunogen. IP: Immunoprecipitation was performed using antibody linked protein A beads. 40 ug of antibody per 100 ul of beads
Uses:	IHC - Paraffin (5 µg/ml), Western blot (1:500 - 1:1000), Immunoprecipitation, ELISA (Optimal dilution to be determined by the researcher)
Size:	50 µg
Concentration:	1 mg/ml

Immunohistochemistry Image:



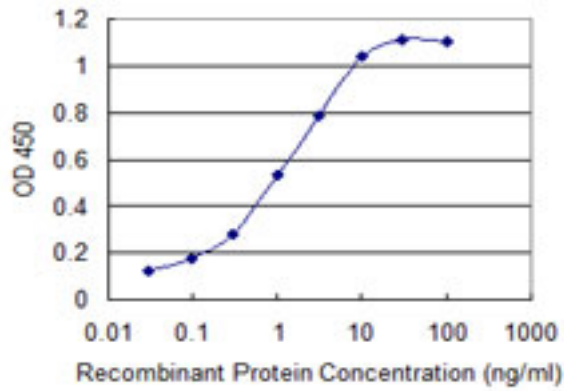
Anti-SPINK1 antibody IHC of human pancreas. Immunohistochemistry of formalin-fixed, paraffin-embedded tissue after heat-induced antigen retrieval. Antibody LS-B5538 concentration 5 ug/ml.

Western Blot Image:



SPINK1 monoclonal antibody clone 4D4. Western blot of SPINK1 expression in human pancreas.

ELISA Image:



Detection limit for recombinant GST tagged SPINK1 is 0.03 ng/ml as a capture antibody.

Requested From:

Japan

Laboratory Reagent For In Vitro Research Use Only

Not for resale without prior written consent from LifeSpan BioSciences, Inc.

Created on 9/24/2014

© 2014 LifeSpan BioSciences