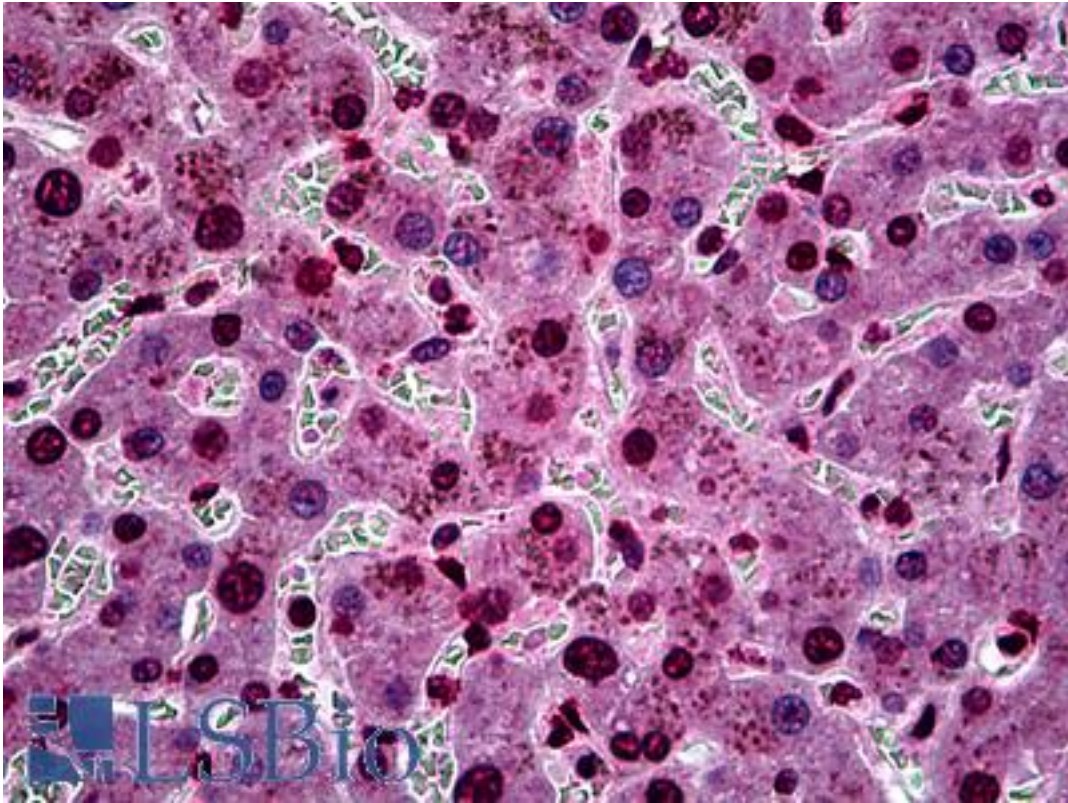


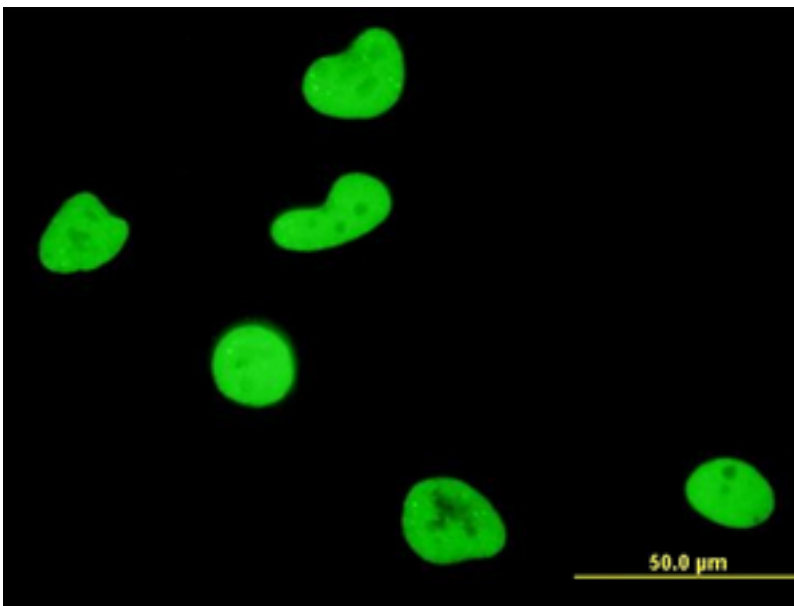
SGK1 / SGK Mouse anti-Human Monoclonal (3E3) Antibody - LS-B5532 - LSBio	
CatalogID:	LS-B5532
Validation:	This antibody replaces catalog number LS-C133431. It has been validated for use in the following assays: IHC-P.
Target:	serum/glucocorticoid regulated kinase 1 (SGK1)
Synonyms:	SGK1 Antibody, Hsgk Antibody, Hsgk1 Antibody, SGK Antibody, Sgk1 variant i3 Antibody
Family / Subfamily:	Protein Kinase / SGK
Host	SGK1 antibody was produced in Mouse
Clonality:	Monoclonal
Isotype:	IgG2b,k
Clone Name:	3E3
Immunogen Species:	SGK1 / SGK antibody was raised against Human
Immunogen:	SGK1 / SGK antibody was raised against sGK (AAH01263, 1 a.a. ~ 91 a.a) partial recombinant protein with GST tag. MW of the GST tag alone is 26 KDa.
Specificity:	Human SGK1
Reactivity:	Human
Purification:	Protein A purified
Presentation:	PBS, pH 7.2
Recommended Storage:	Short term 4°C, long term aliquot and store at -20°C, avoid freeze thaw cycles.
Usage Summary:	Immunohistochemistry: Formalin-fixed paraffin-embedded sections. Sandwich ELISA: Recombinant protein. Western Blot with the recombinant protein used as the immunogen.
Uses:	IHC - Paraffin (5 µg/ml), Immunofluorescence (10 µg/ml), Western blot, ELISA (Optimal dilution to be determined by the researcher)
Size:	50 µg
Concentration:	0.26 mg/ml

Immunohistochemistry Image:



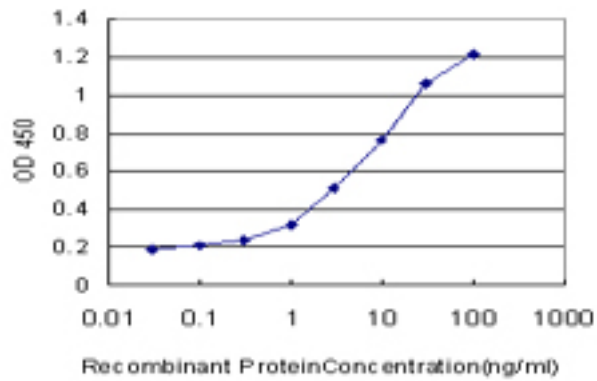
Anti-SGK1 antibody IHC of human liver. Immunohistochemistry of formalin-fixed, paraffin-embedded tissue after heat-induced antigen retrieval. Antibody LS-B5532 concentration 5 ug/ml.

Immunofluorescence Image:



Immunofluorescence of monoclonal antibody to SGK1 on HeLa cell. [antibody concentration 10 ug/ml].

ELISA Image:



Detection limit for recombinant GST tagged SGK is approximately 0.03 ng/ml as a capture antibody.

Requested From:

Japan

Laboratory Reagent For In Vitro Research Use Only

Not for resale without prior written consent from LifeSpan BioSciences, Inc.

Created on 9/24/2014

© 2014 LifeSpan BioSciences