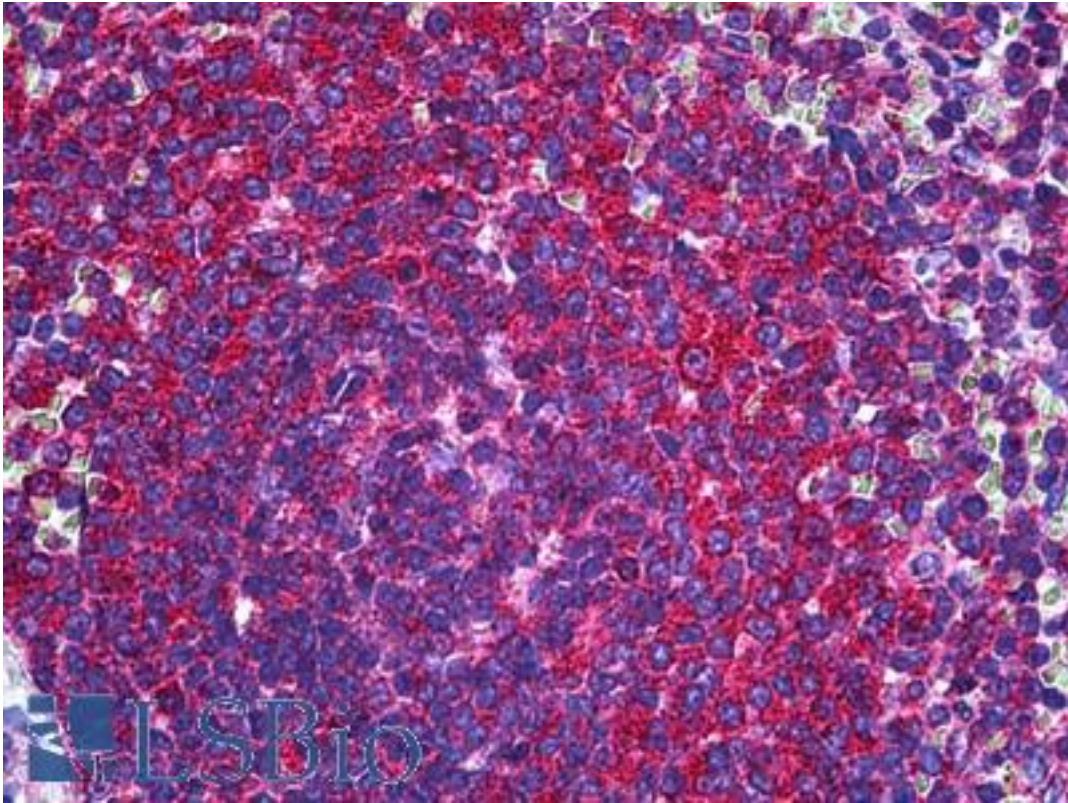


**RALB Mouse anti-Human Monoclonal (4D1) Antibody - LS-B5523 - LSBio**

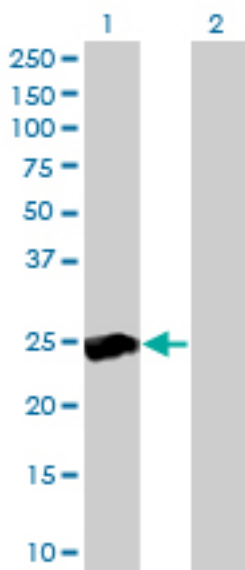
<b>CatalogID:</b>	LS-B5523
<b>Validation:</b>	This antibody replaces catalog number LS-C133078. It has been validated for use in the following assays: IHC-P.
<b>Target:</b>	v-ral simian leukemia viral oncogene homolog B (RALB)
<b>Synonyms:</b>	RALB Antibody, GTP binding protein) Antibody, RAS-like protein B Antibody, Ras-related protein Ral-B Antibody
<b>Family / Subfamily:</b>	Ras GTPase superfamily IPR001806 / not assigned-Ras GTPase superfamily IPR001806
<b>Host</b>	RALB antibody was produced in Mouse
<b>Clonality:</b>	Monoclonal
<b>Isotype:</b>	IgG2a,k
<b>Clone Name:</b>	4D1
<b>Immunogen Species:</b>	RALB antibody was raised against Human
<b>Immunogen:</b>	RALB antibody was raised against rALB (AAH18163, 89 a.a. ~ 183 a.a) partial recombinant protein with GST tag. MW of the GST tag alone is 26 KDa.
<b>Specificity:</b>	Human RALB
<b>Reactivity:</b>	Human
<b>Purification:</b>	Protein A purified
<b>Presentation:</b>	PBS, pH 7.2. Sourced in Ascites.
<b>Recommended Storage:</b>	Short term 4°C, long term aliquot and store at -20°C, avoid freeze thaw cycles.
<b>Usage Summary:</b>	Immunohistochemistry: Formalin-fixed paraffin-embedded sections. Sandwich ELISA: Recombinant protein. Western Blot using transfected cell line lysates and the recombinant protein used as the immunogen.
<b>Uses:</b>	IHC - Paraffin (5 µg/ml), Western blot (1:500 - 1:1000), Immunoprecipitation, ELISA (Optimal dilution to be determined by the researcher)
<b>Size:</b>	50 µg
<b>Concentration:</b>	0.5 mg/ml

**Immunohistochemistry Image:**



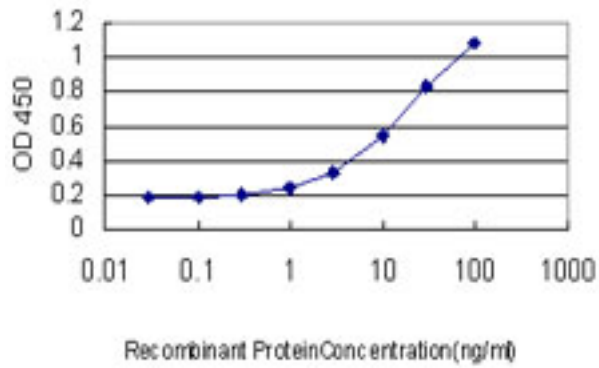
Anti-RALB antibody IHC of human spleen. Immunohistochemistry of formalin-fixed, paraffin-embedded tissue after heat-induced antigen retrieval. Antibody LS-B5523 concentration 5 ug/ml.

**Western Blot Image:**



Western blot of RALB expression in transfected 293T cell line by RALB monoclonal antibody clone 4D1.

**ELISA Image:**



Detection limit for recombinant GST tagged RALB is approximately 0.3 ng/ml as a capture antibody.

**Requested From:**

Japan

Laboratory Reagent For In Vitro Research Use Only

Not for resale without prior written consent from LifeSpan BioSciences, Inc.

Created on 9/24/2014

© 2014 LifeSpan BioSciences