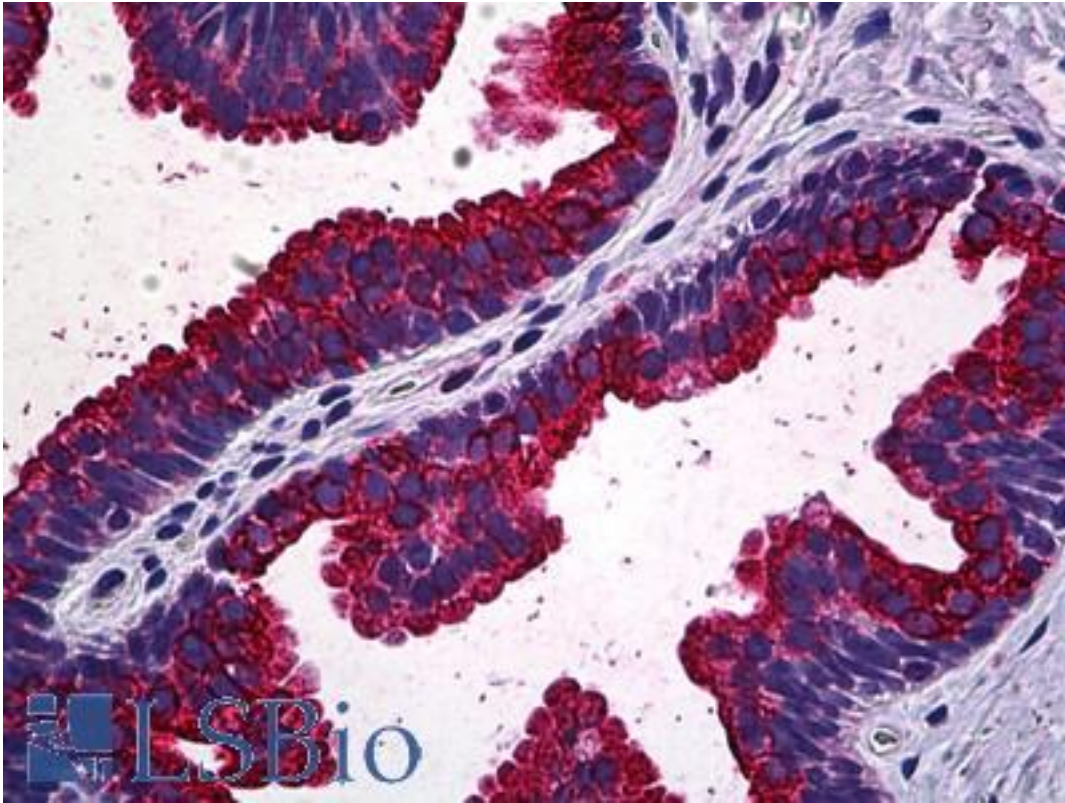


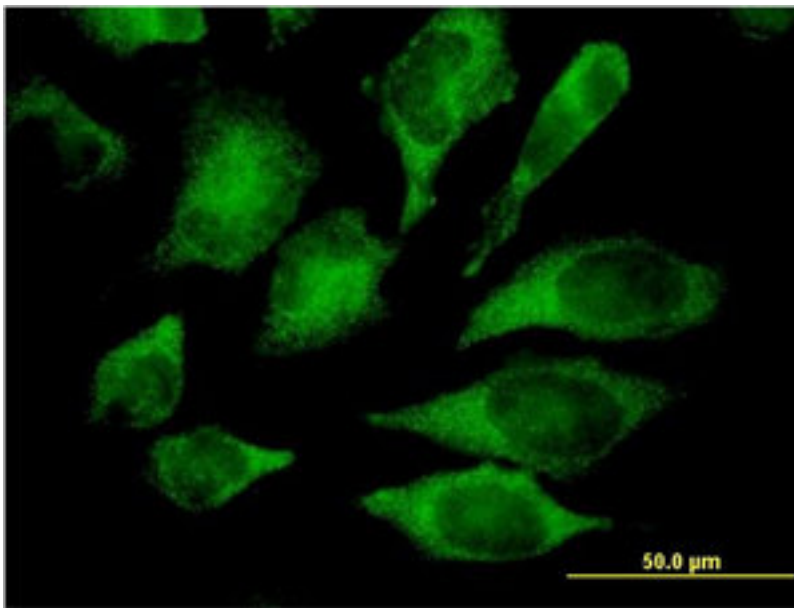
MAPK13 / p38delta Mouse anti-Human Monoclonal (1E11) Antibody - LS-B5519 - LSBio	
CatalogID:	LS-B5519
Validation:	This antibody replaces catalog number LS-C133403. It has been validated for use in the following assays: IHC-P.
Target:	mitogen-activated protein kinase 13 (MAPK13)
Synonyms:	MAPK13 Antibody, MAPK-13 Antibody, MAPK 13 Antibody, p38delta Antibody, PRKM13 Antibody, SAPK4 Antibody, Serk 4 Antibody, MAP kinase 13 Antibody, MAP kinase p38 delta Antibody
Family / Subfamily:	Protein Kinase / MAPK
Host	MAPK13 antibody was produced in Mouse
Clonality:	Monoclonal
Isotype:	IgG1,k
Clone Name:	1E11
Immunogen Species:	MAPK13 / p38delta antibody was raised against Human
Immunogen:	MAPK13 / p38delta antibody was raised against mAPK13 (AAH00433, 251 a.a. ~ 365 a.a) partial recombinant protein with GST tag. MW of the GST tag alone is 26 KDa.
Specificity:	Human MAPK13
Reactivity:	Human
Purification:	Protein A purified
Presentation:	PBS, pH 7.2
Recommended Storage:	Short term 4°C, long term aliquot and store at -20°C, avoid freeze thaw cycles.
Usage Summary:	Immunohistochemistry: Formalin-fixed paraffin-embedded sections. Sandwich ELISA: Recombinant protein. Western Blot using cell line lysates.
Uses:	IHC - Paraffin (5 µg/ml), Immunofluorescence (10 µg/ml), Western blot, ELISA (Optimal dilution to be determined by the researcher)
Size:	50 µg
Concentration:	0.32 mg/ml

Immunohistochemistry Image:



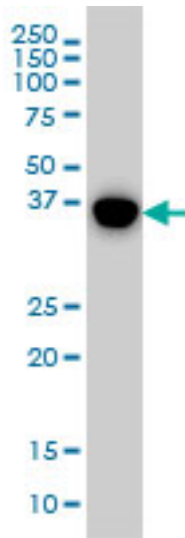
Anti-MAPK13 / SAPK4 antibody IHC of human prostate. Immunohistochemistry of formalin-fixed, paraffin-embedded tissue after heat-induced antigen retrieval. Antibody LS-B5519 concentration 5 ug/ml.

Immunofluorescence Image:



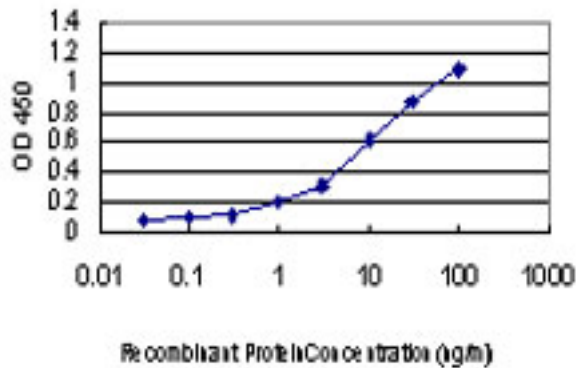
Immunofluorescence of monoclonal antibody to MAPK13 on HeLa cell. [antibody concentration 10 ug/ml]

Western Blot Image:



MAPK13 monoclonal antibody clone 1E11 Western blot of MAPK13 expression in A-549.

ELISA Image:



Detection limit for recombinant GST tagged MAPK13 is approximately 0.3 ng/ml as a capture antibody.

Requested From:

Japan

Laboratory Reagent For In Vitro Research Use Only

Not for resale without prior written consent from LifeSpan BioSciences, Inc.

Created on 9/24/2014

© 2014 LifeSpan BioSciences