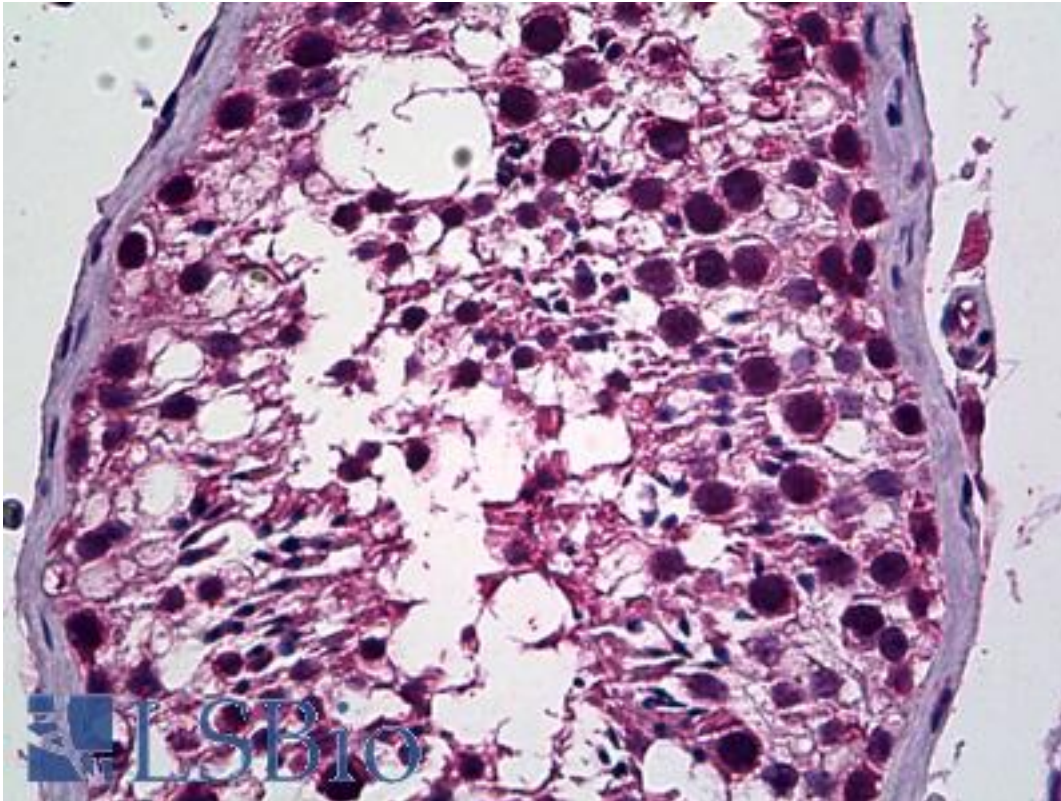


PREX1 / P-REX1 Goat anti-Human Polyclonal (Internal) Antibody - LS-B5514 - LSBio

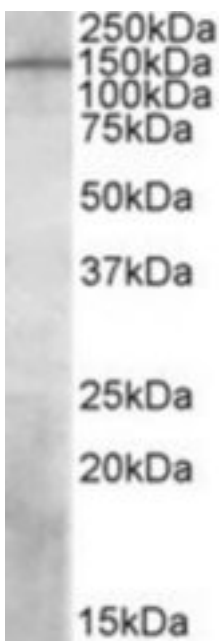
CatalogID:	LS-B5514
Validation:	This antibody replaces catalog number LS-C112667. It has been validated for use in the following assays: IHC-P.
Target:	phosphatidylinositol-3,4,5-trisphosphate-dependent Rac exchange factor 1 (PREX1)
Synonyms:	PREX1 Antibody, KIAA1415 Antibody, P-REX1 Antibody
Host	PREX1 antibody was produced in Goat
Clonality:	Polyclonal
Immunogen Species:	PREX1 / P-REX1 antibody was raised against Human
Antigen Type:	Synthetic peptide
Immunogen:	PREX1 / P-REX1 antibody was raised against synthetic peptide C-ERSNLPTDASTTA from an internal region of human PREX1 (NP_065871.2). Percent identity by BLAST analysis: Human, Gorilla, Monkey, Marmoset, Panda, Bovine, Dog, Bat (100%); Rat, Hamster, Elephant, Horse, Opossum (92%); Mouse, Turkey, Chicken, Lizard (85%).
Specificity:	Human PREX1.
Epitope:	Internal
Reactivity:	Human, Gorilla, Monkey, Bat, Bovine, Dog
Predicted Reactivity:	Rat, Hamster, Horse
Purification:	Immunoaffinity purified
Presentation:	Tris-buffered saline, pH 7.3, 0.5% BSA, 0.02% sodium azide
Recommended Storage:	Store at -20°C. Minimize freezing and thawing.
Usage Summary:	Peptide ELISA: antibody detection limit dilution 1:16000. Western blot: Approx 150 kDa band observed in Human Brain (Temporal Cortex) lysates (calculated MW of 186 kDa according to NP_065871.2). Recommended concentration: 1-3 ug/ml.
Uses:	IHC - Paraffin (10 µg/ml), Western blot (1 - 3 µg/ml), ELISA (1:16000) (Optimal dilution to be determined by the researcher)
Size:	50 µg
Concentration:	0.5 mg/ml

Immunohistochemistry Image:



Anti-PREX1 antibody IHC of human testis. Immunohistochemistry of formalin-fixed, paraffin-embedded tissue after heat-induced antigen retrieval. Antibody LS-B5514 concentration 10 ug/ml.

Western Blot Image:



PREX1 antibody (1 ug/ml) staining of Human Temporal Cortex lysate (35 ug protein/ml in RIPA buffer). Primary incubation was 1 hour. Detected by chemiluminescence.

Requested From:	Japan
Laboratory Reagent For In Vitro Research Use Only	
Not for resale without prior written consent from LifeSpan BioSciences, Inc.	
Created on 9/24/2014	
© 2014 LifeSpan BioSciences	