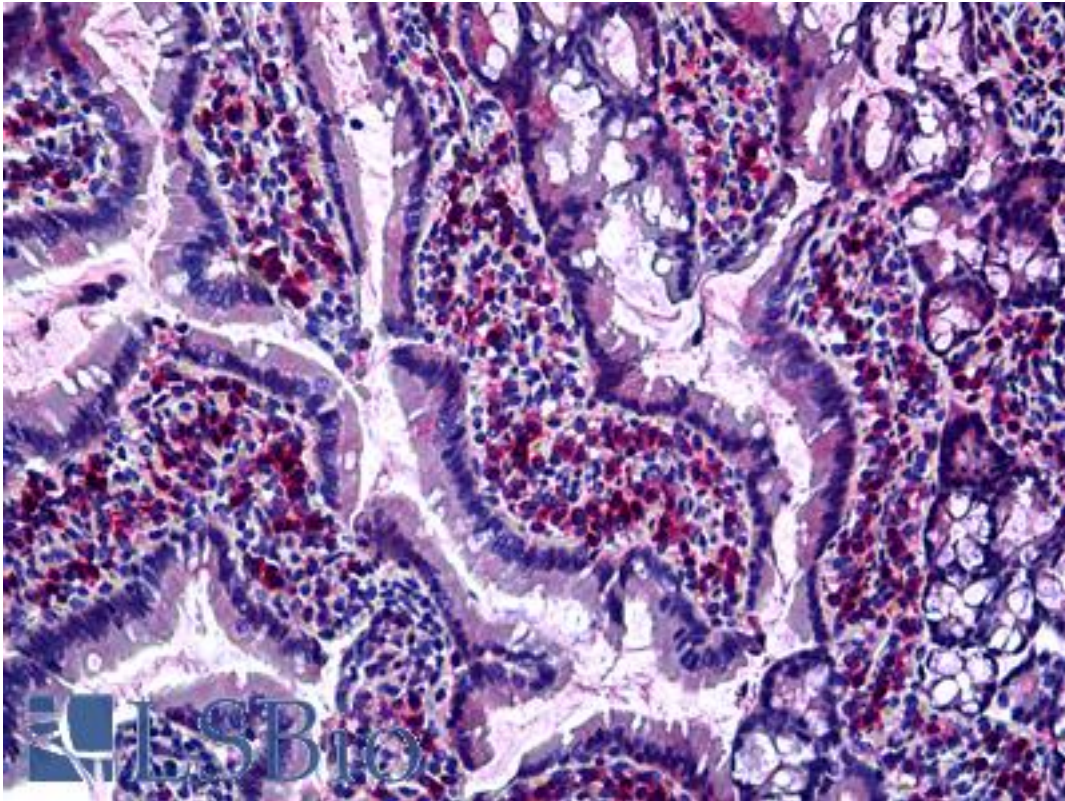


GJB2 / CX26 / Connexin 26 Mouse anti-Rat Monoclonal (Cytoplasmic Domain) Antibody - LS-B5511 - LSBio

CatalogID:	LS-B5511
Validation:	This antibody replaces catalog number LS-C14523. It has been validated for use in the following assays: IHC-P.
Target:	gap junction protein, beta 2, 26kDa (GJB2)
Synonyms:	GJB2 Antibody, Connexin 26 Antibody, Connexin-26 Antibody, DFNB1A Antibody, DFNA3 Antibody, DFNB1 Antibody, Gap junction protein beta 2 Antibody, KID Antibody, HID Antibody, PPK Antibody, NSRD1 Antibody, CX26 Antibody, DFNA3A Antibody
Family / Subfamily:	Ion Channel / Connexin
Host	GJB2 antibody was produced in Mouse
Clonality:	Monoclonal
Isotype:	IgG1,k
Immunogen Species:	GJB2 / CX26 / Connexin 26 antibody was raised against Rat
Antigen Type:	Synthetic peptide
Immunogen:	GJB2 / CX26 / Connexin 26 antibody was raised against synthetic peptide corresponding to a segment of the cytoplasmic loop of rat Connexin-26. (4,5).
Specificity:	Reacts strongly with Connexin-26, which has a predicted molecular weight of 26.5kD. Although the polyclonal anti-Cx26 antibody (feline. No. 71-0500) raised against the same sequence as this monoclonal anti-Cx26 antibody cross-reacts with Cx30, this monoclonal anti-Cx26 appears to exhibit minimal cross-reaction with Cx30 by western blotting. The degree of cross-reaction with Cx30 by IHC is uncertain, but may be influenced by fixation conditions. Rat, mouse and human. Reactivity of this antibody on Western blots has been confirmed by using extracts from mouse liver, mouse brain and rat brain.
Epitope:	Cytoplasmic Domain
Reactivity:	Rat, Human, Mouse
Purification:	Immunoaffinity purified
Presentation:	PBS, pH 7.4, 0.1 % sodium azide
Recommended Storage:	May be stored at 4°C for short-term only. Aliquot to avoid repeated freezing and thawing. Store at -20°C. Aliquots are stable for at least 12months.
Usage Summary:	Suitable for use in ELISA, Western Blot and Immunohistochemistry. ELISA: 0.1-1 ug/ml. Immunohistochemistry (Frozen): 1-2 ug/ml. Western Blot: 1 ug/ml. Reactivity confirmed using extracts from mouse liver, mouse brain and rat brain.
Uses:	IHC - Paraffin (10 µg/ml), IHC - Frozen, Western blot (1 µg/ml), ELISA (0.1 - 1 µg/ml) (Optimal dilution to be determined by the researcher)
Size:	50 µg
Concentration:	0.5 mg/ml

Immunohistochemistry Image:



Anti-GJB2 antibody IHC of rat intestine. Immunohistochemistry of formalin-fixed, paraffin-embedded tissue after heat-induced antigen retrieval. Antibody LS-B5511 concentration 10 ug/ml.

Requested From:

Japan

Laboratory Reagent For In Vitro Research Use Only

Not for resale without prior written consent from LifeSpan BioSciences, Inc.

Created on 9/24/2014

© 2014 LifeSpan BioSciences