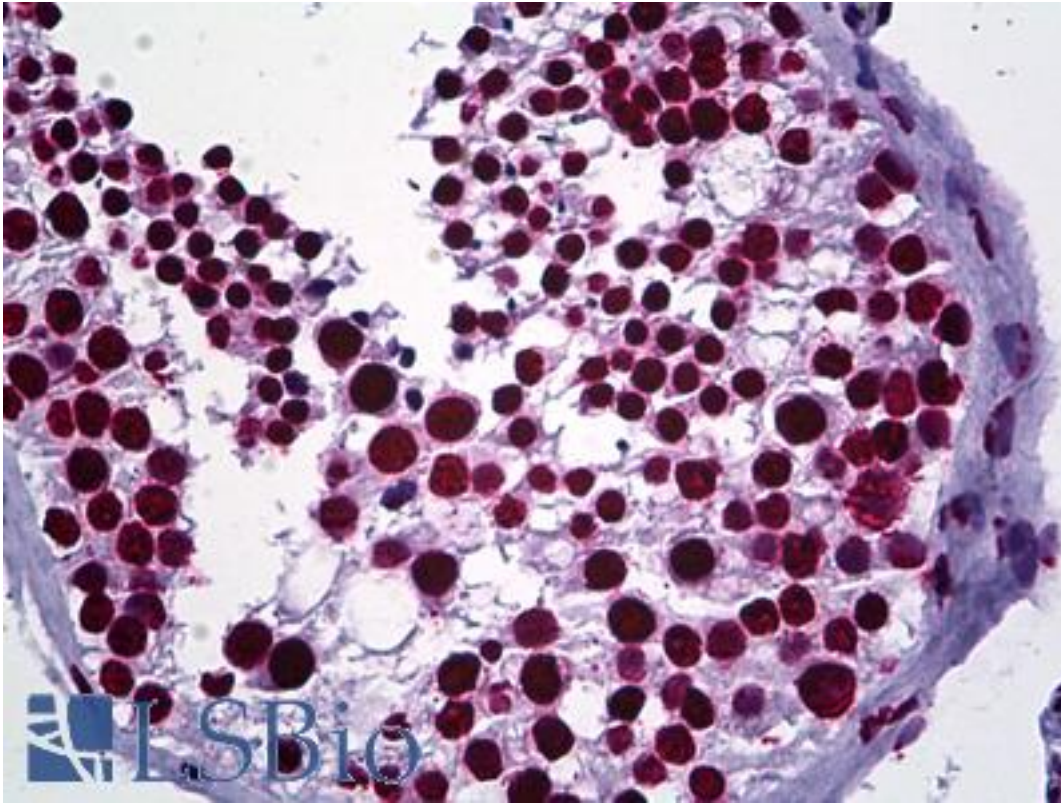


SR Proteins Mouse anti-Bovine Monoclonal Antibody - LS-B5510 - LSBio	
<b>CatalogID:</b>	LS-B5510
<b>Validation:</b>	This antibody replaces catalog number LS-C75960. It has been validated for use in the following assays: IHC-P.
<b>Target:</b>	SR Proteins / Non-snRNP Splicing Factor
<b>Host</b>	SR Proteins / Non-snRNP Splicing Factor antibody was produced in Mouse
<b>Clonality:</b>	Monoclonal
<b>Isotype:</b>	IgG1,k
<b>Immunogen Species:</b>	SR Proteins antibody was raised against Bovine
<b>Antigen Type:</b>	GST fusion protein
<b>Immunogen:</b>	SR Proteins antibody was raised against purified, de-phosphorylated bovine Srp55 and Drosophila p55-GST.
<b>Specificity:</b>	Detects a sub-set of the non-snRNP splicing factors termed SR proteins. The antibody detects SRp75, SRp55, SRp40 and SRp20 but not SRp30a or b (ASF/SF2, SC-35) proteins. Recognizes approximately 20 distinct nuclear proteins including the U1 70K component of the U1 snRNP and both subunits of U2AF1. Species cross-reactivity (Western Blot): chicken, human, mouse, rabbit, canine, rat, Xenopus. Reactivity has not been detected with yeasts.
<b>Reactivity:</b>	Bovine, Human, Mouse, Rat, Rabbit
<b>Purification:</b>	Protein A purified
<b>Presentation:</b>	PBS, pH 7.2, 0.1% sodium azide.
<b>Recommended Storage:</b>	May be stored at 4°C for short-term only. Aliquot to avoid repeated freezing and thawing. Store at -20°C. Aliquots are stable for at least 12 months
<b>Usage Summary:</b>	Suitable for use in Immunofluorescence, ELISA, Western Blot. Reactivity is confirmed by Western Blot. ELISA: 0.1-1 ug/ml. Immunofluorescence: 0.5-2 ug/ml, human. Western Blot: 3-5 ug/ml. Positive control: HeLa cell, nuclear extracts.
<b>Uses:</b>	IHC - Paraffin (10 µg/ml), Immunofluorescence (0.5 - 2 µg/ml), Western blot (3 - 5 µg/ml), ELISA (0.1 - 1 µg/ml) (Optimal dilution to be determined by the researcher)
<b>Size:</b>	50 µg
<b>Concentration:</b>	0.5 mg/ml

**Immunohistochemistry Image:**



Anti-SR Proteins antibody IHC of human testis. Immunohistochemistry of formalin-fixed, paraffin-embedded tissue after heat-induced antigen retrieval. Antibody LS-B5510 concentration 10 ug/ml.

**Requested From:**

Japan

Laboratory Reagent For In Vitro Research Use Only

Not for resale without prior written consent from LifeSpan BioSciences, Inc.

Created on 9/24/2014

© 2014 LifeSpan BioSciences